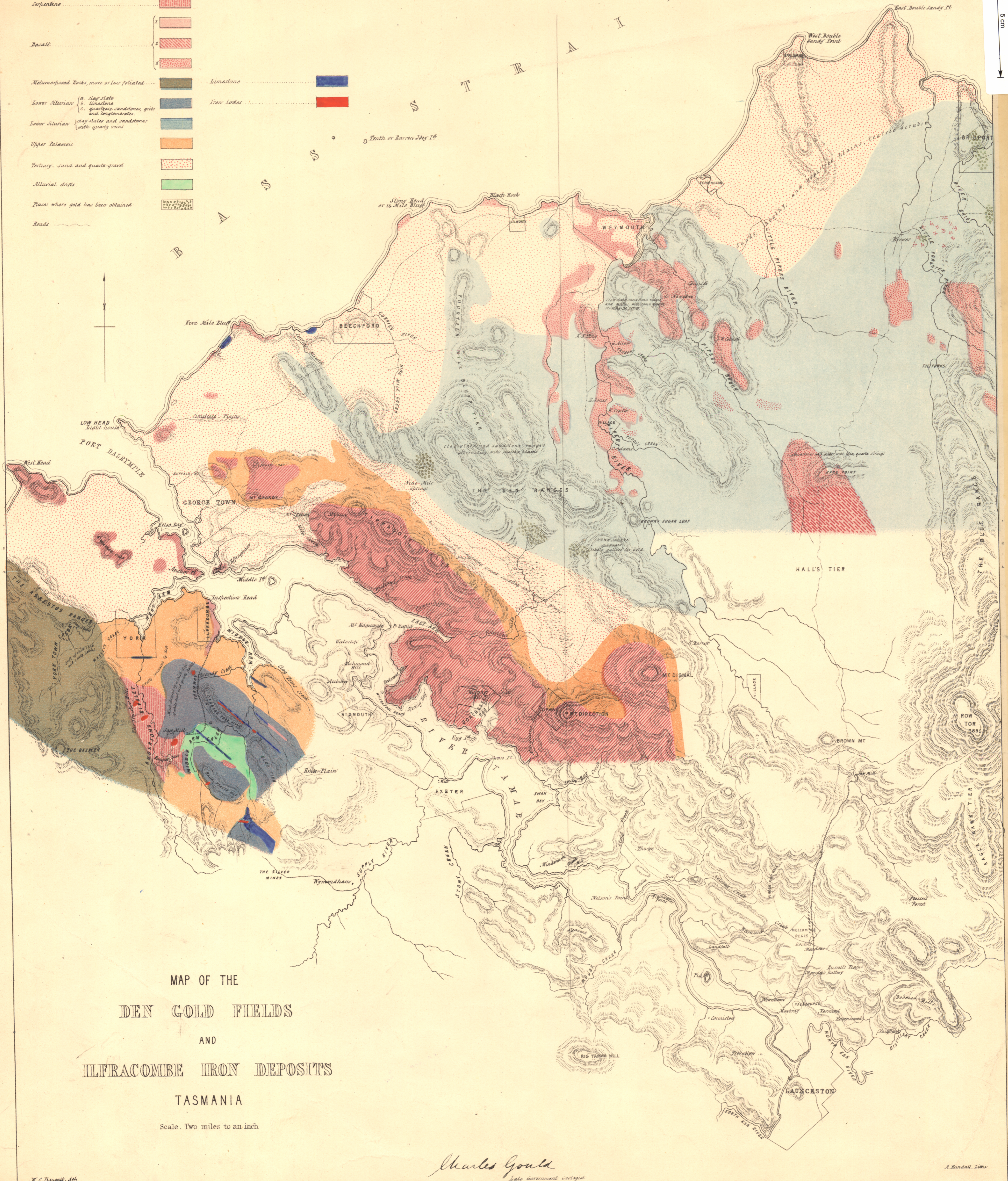


1L-31

5 cm

REFERENCE

Greenstone	[Red diagonal lines]
Serpentine	[Red horizontal lines]
Basalt	[Red vertical lines]
Metamorphosed Rocks, more or less foliated	[Red wavy lines]
Lower Silurian (a. clay slate b. limestone c. quartzites, sandstones, gneiss and conglomerates)	[Blue horizontal lines]
Lower Silurian (clay slates and sandstones with quartz veins)	[Blue vertical lines]
Upper Devonian	[Orange horizontal lines]
Tertiary, sand and quartz-gravel	[Orange vertical lines]
Alluvial drifts	[Green horizontal lines]
Places where gold has been obtained	[Green wavy lines]
Roads	[Black line]



MAP OF THE  
DEN GOLD FIELDS  
AND  
ILFRACOMBE IRON DEPOSITS  
TASMANIA

Scale. Two miles to an inch

Charles Gould  
Late Government Geologist

A. Randall, Litho.

W. C. Duguid, del.

1L-31

1L

15