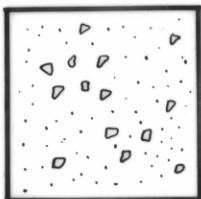
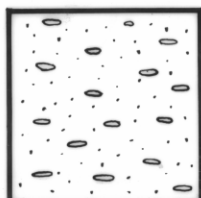


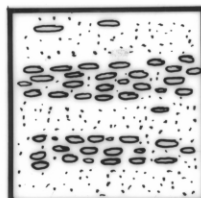
# STRUCTURES IN DIAL GROUP



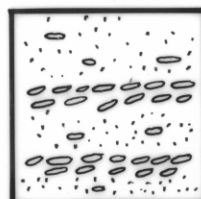
RANDOM FABRIC  
(DUNCAN CONGLOMERATE)



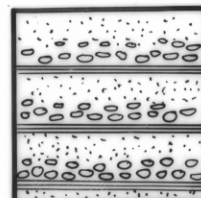
ALIGNED PEBBLES  
(DUNCAN CONGLOMERATE)



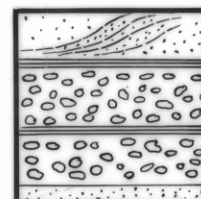
BANDED FABRIC  
(DUNCAN CONGLOMERATE)



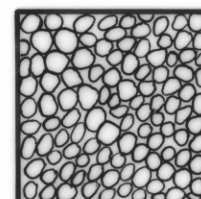
IMBRICATE PEBBLES  
(DUNCAN CONGLOMERATE)



GRADED BEDDING  
(CONGLOMERATE, SULPHUR CREEK TYPE.)



BEDDED, SOMETIMES CROSSBEDDED  
(MOINA SANDSTONE & CONGLOMERATE)



HOMOGENOUS CONTINUOUS FRAMEWORK  
(ROLAND CONGLOMERATE, CONGLOMERATE AT PALOONA)

2015

89

5 cm

DEPT OF MINES  
2015-29

Reduce to 24 cms (4")