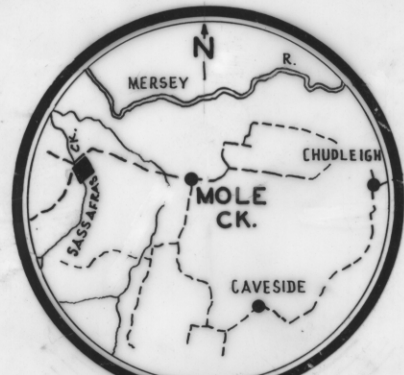


5 cm

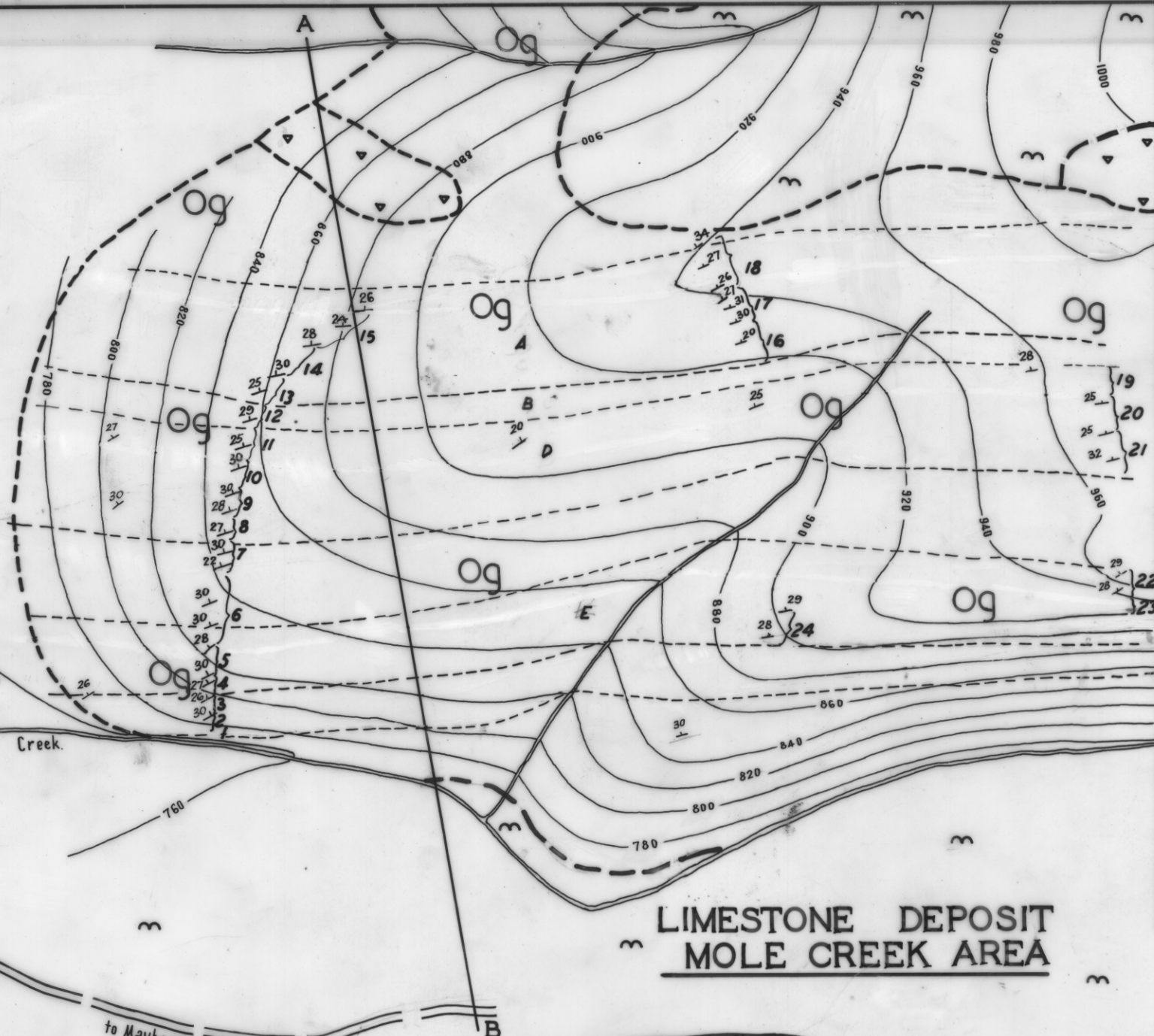


0 2 4 MILES.



0 200 400 FEET

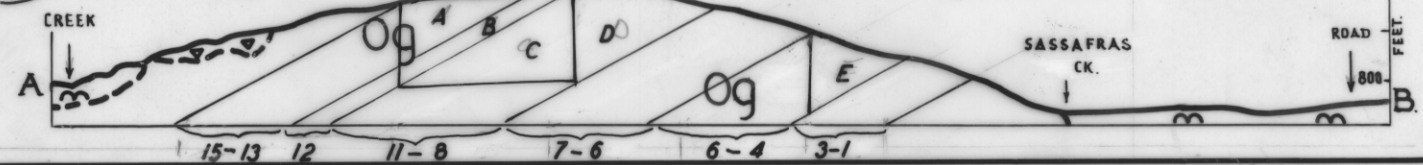
DEPT OF MINES HOBART
2088 - 45.



	RECENT ALLUVIUM
	DOLERITE TALUS
	ORDOVICIAN GORDON LIMESTONE
	DIP
	GEOLOGICAL BOUNDARY
	STRIKE LINE
	SAMPLE INTERVAL
	CONTOURS

S. ROWE
GEOLOGIST
1962

LIMESTONE DEPOSIT
MOLE CREEK AREA



900
ROAD
800
FEET