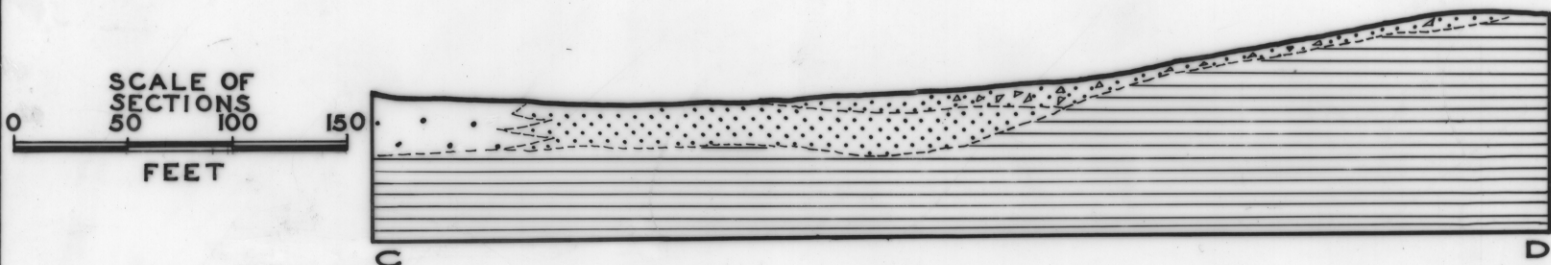
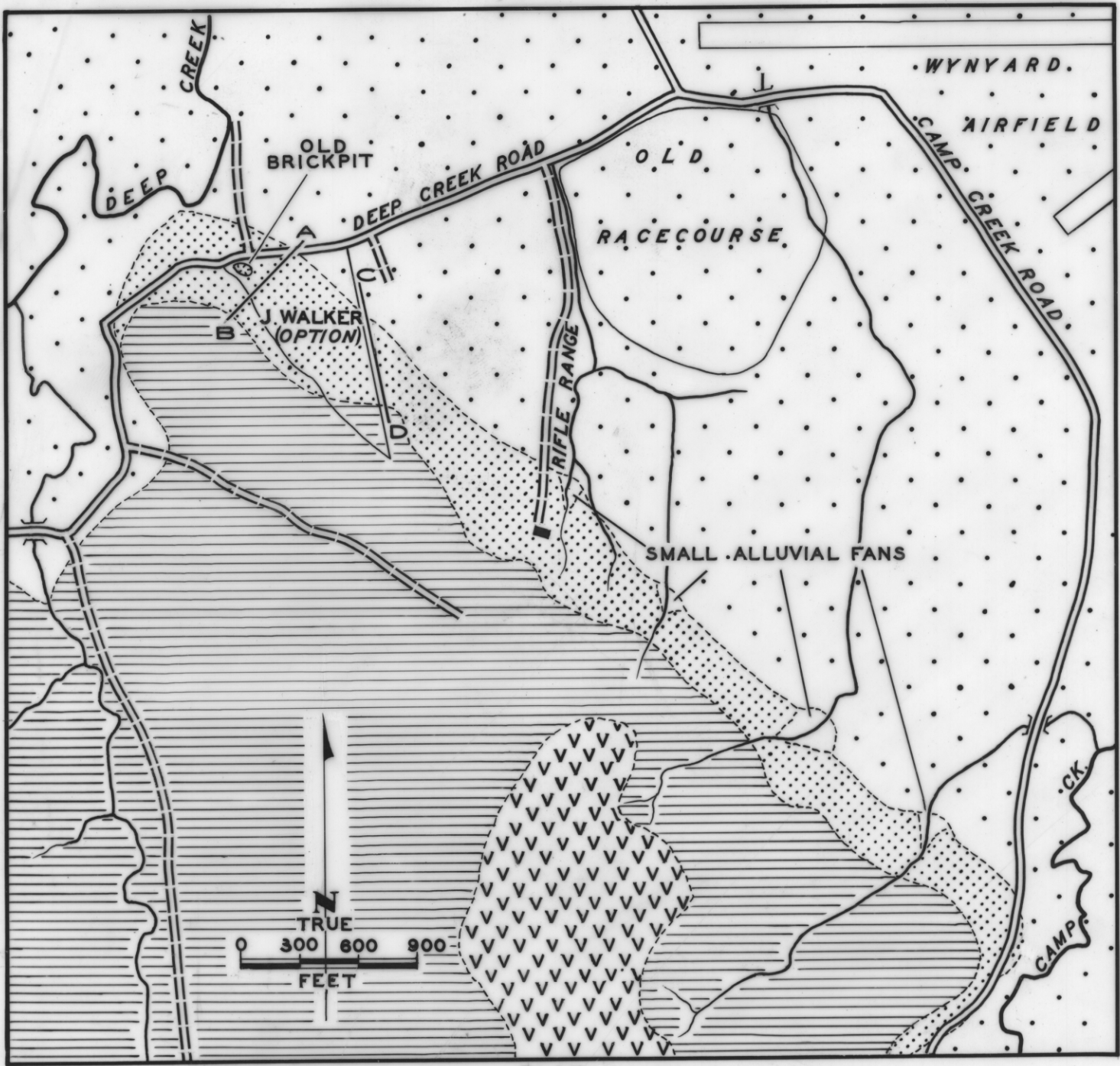


5 cm

CLAY DEPOSIT — DEEP CREEK ROAD
WYNYARD



LEGEND

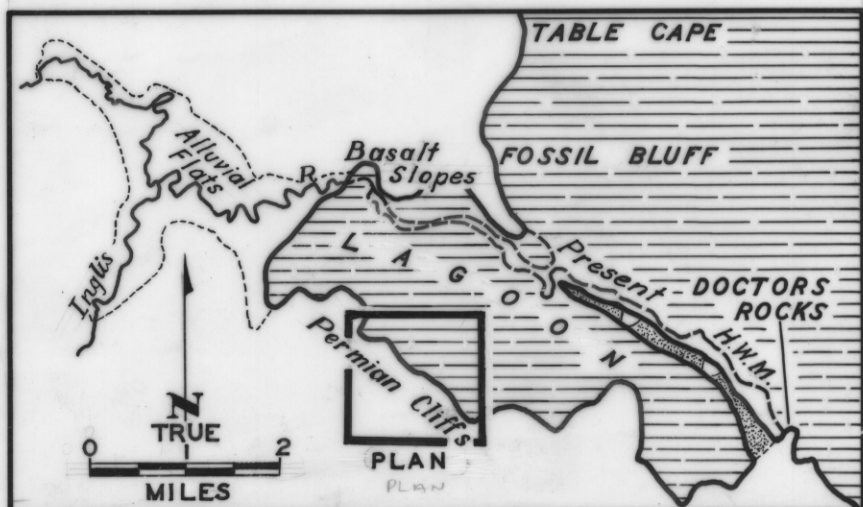
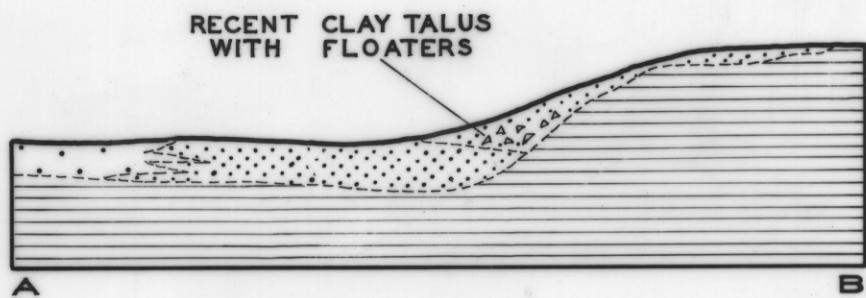
SEDIMENTARY

- PLEISTOCENE SAND
- PLEISTOCENE CLAY
- PERMIAN PEBBLY MUDSTONE

IGNEOUS

- TERTIARY BASALT

R. D. GEE
GEOLOGIST
1982



RECONSTRUCTION — PLEISTOCENE TIDAL LAGOON