

FIG. 27

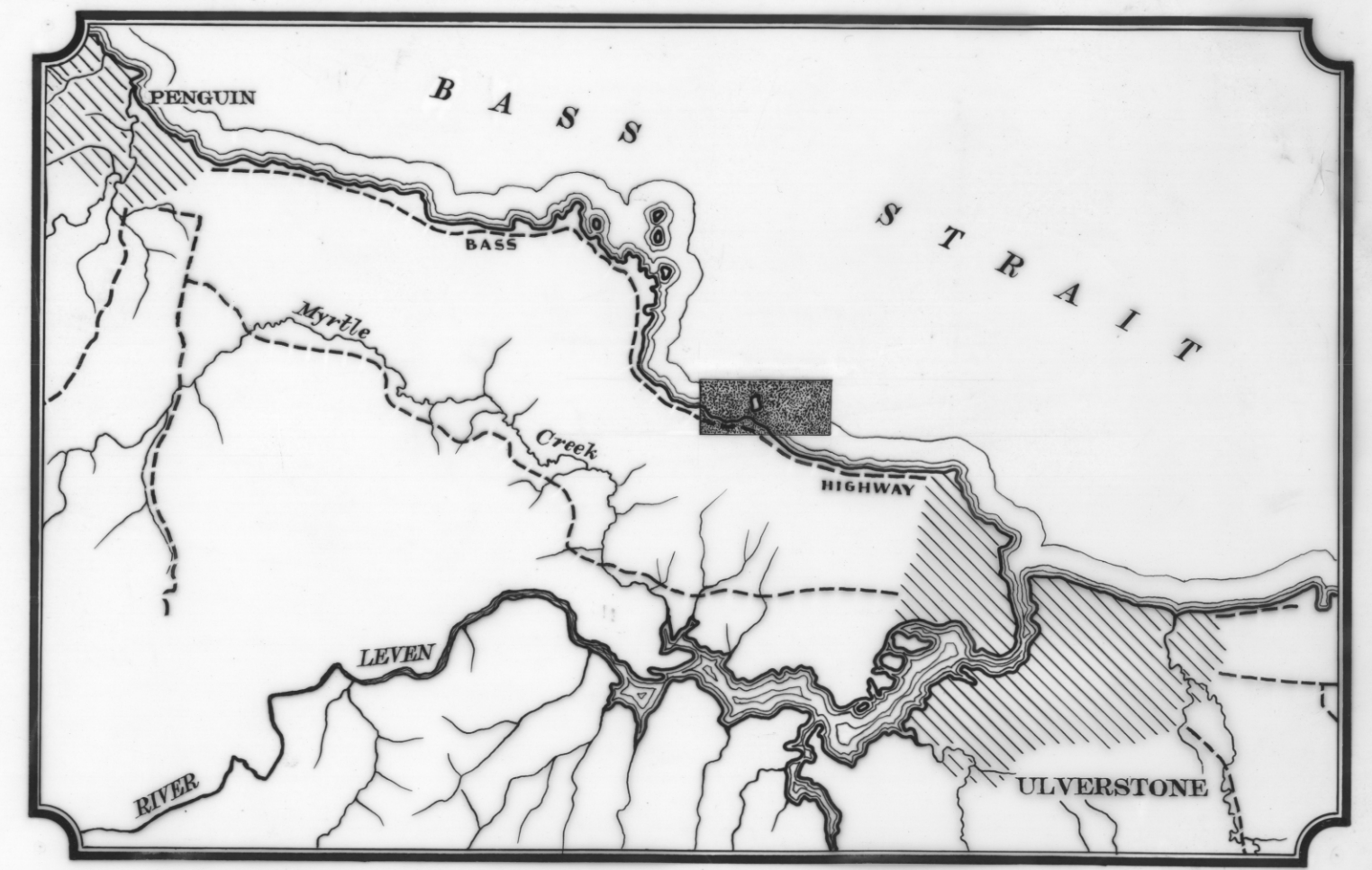
GENERAL GEOLOGICAL MAP of GOAT ISLAND

0 80 160 240 320 FT.

LEGEND

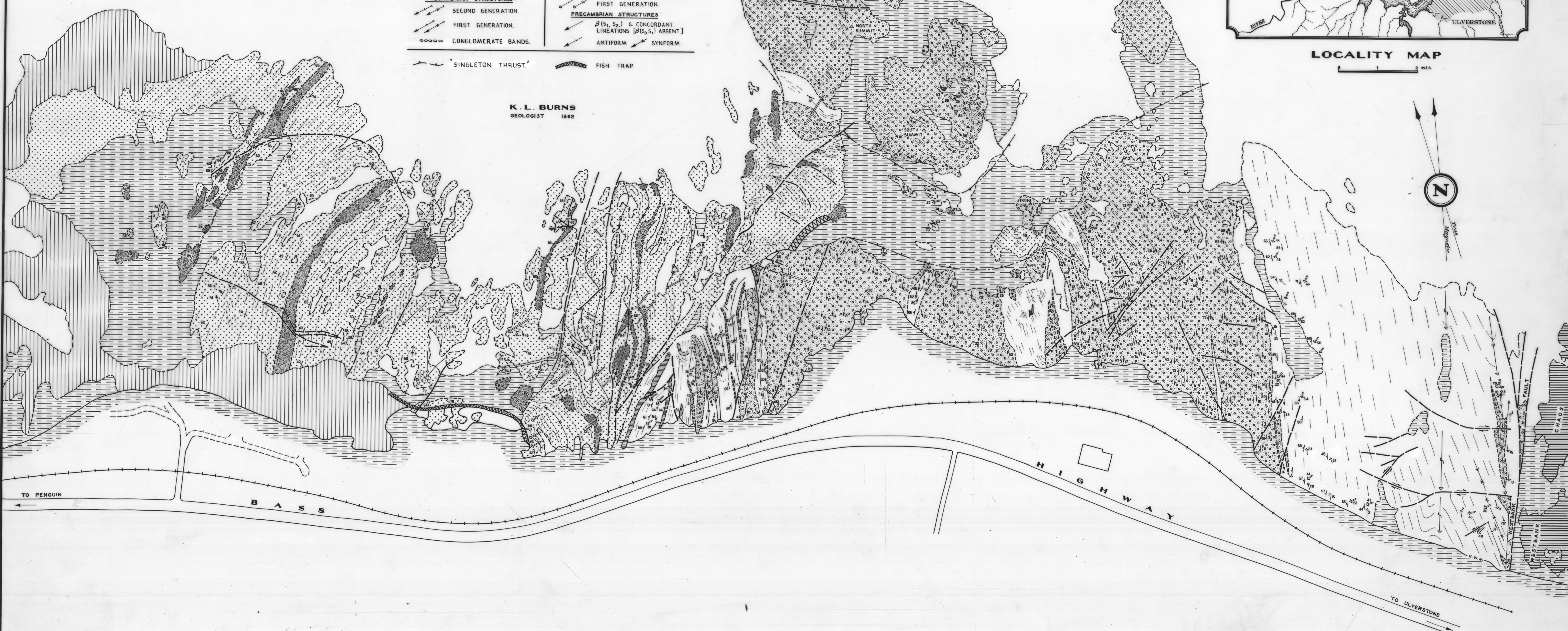
	QUATERNARY		TERTIARY		CAMBRIAN
PRECAMBRIAN					
ROCKY CAPE GROUP			ULVERSTONE METAMORPHICS		
	PROMINENT SANDSTONE		CONGLOMERATE		
	MUDSTONE & SANDSTONE		PHYLLITE		
TABBERABERAN STRUCTURES					
	POLYCLINAL		QUARTZITE		
	FIRST GENERATION	TABBERABERAN STRUCTURES			
	SECOND GENERATION		FIRST GENERATION		
	PRECAMBRIAN STRUCTURES		SECOND GENERATION		
	FIRST GENERATION	PRECAMBRIAN STRUCTURES			
	SECOND GENERATION	FIRST GENERATION			
	CONGLOMERATE BANDS	[β (s_1, s_2) & CONCORDANT LINEATIONS (β (s_1, s_2) ABSENT)]			
	ANTIFORM		SYNFORM		
	SINGLETON THRUST		FISH TRAP		

K. L. BURNS
GEOLOGIST 1982



LOCALITY MAP

0 1 2 MILES



2106
165