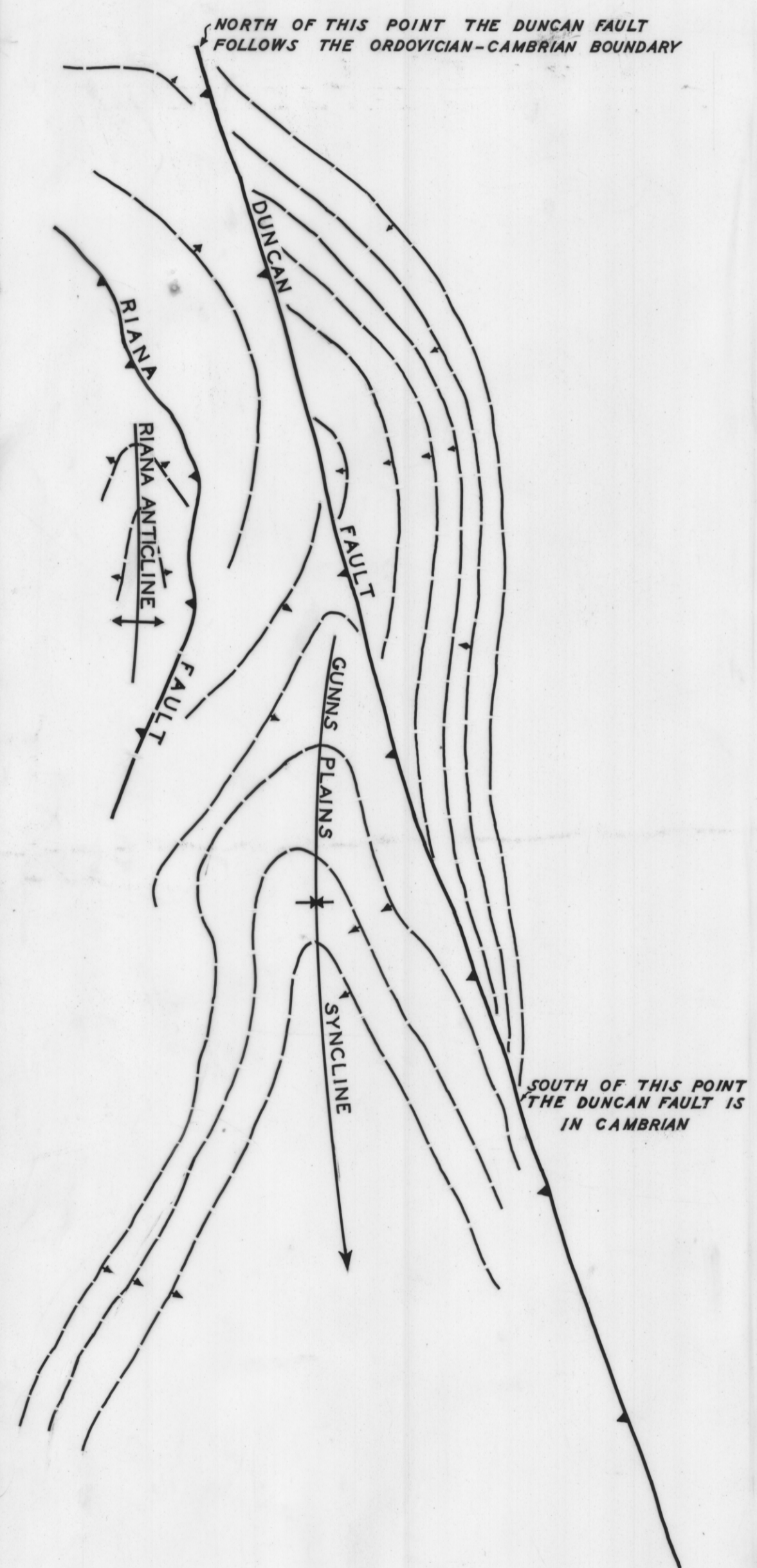
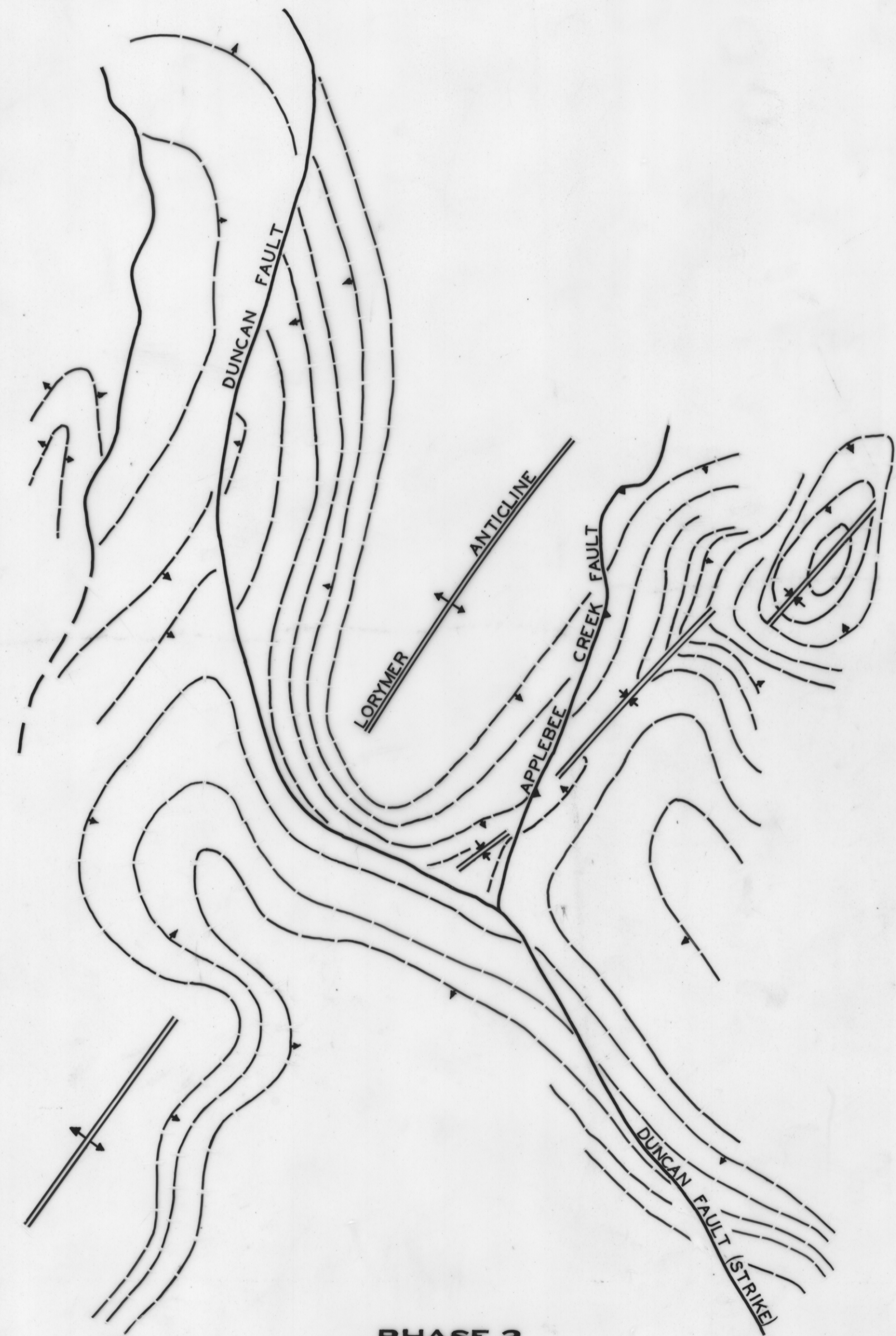


5 cm

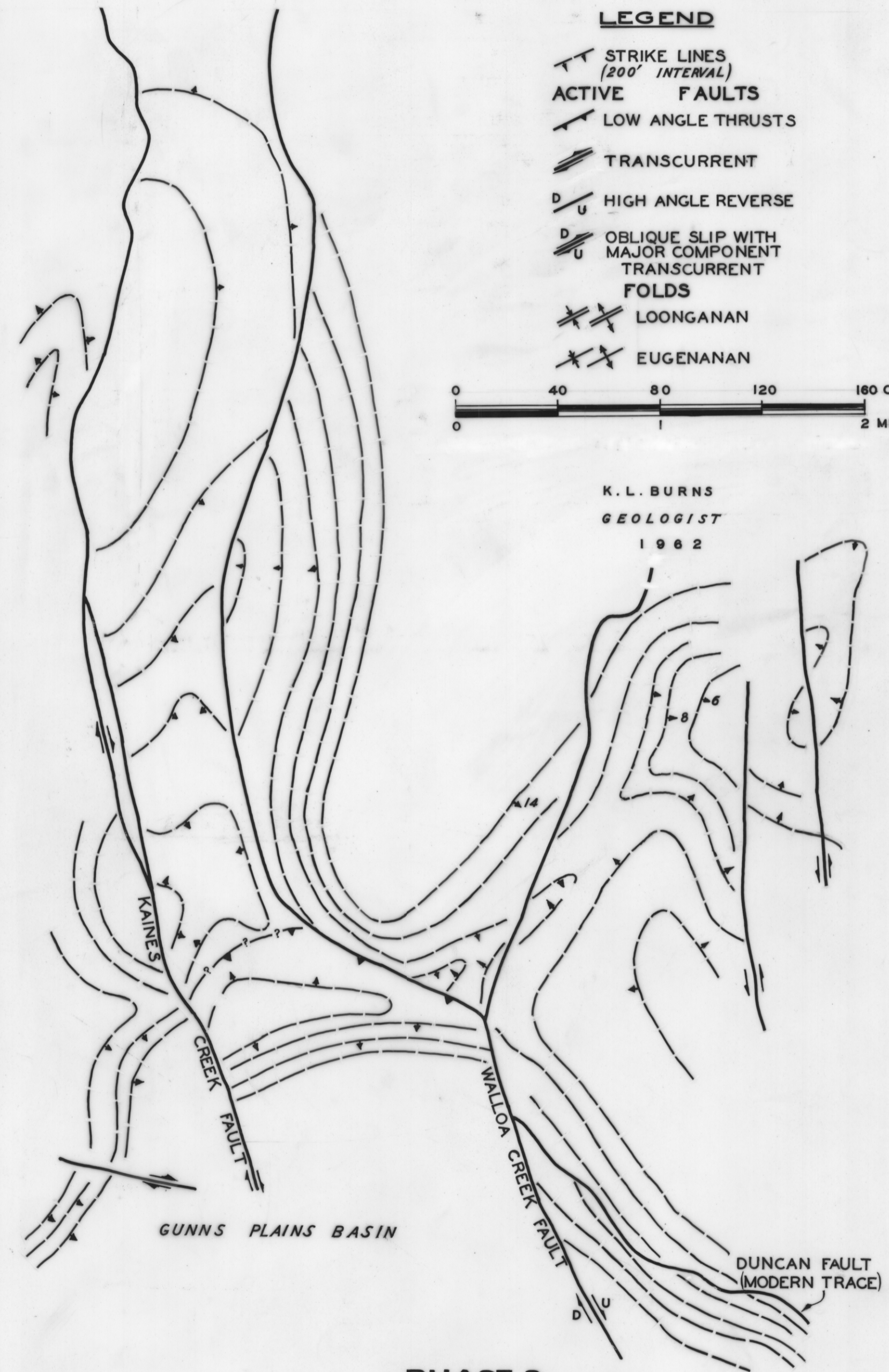
# EVOLUTION OF THE DUNCAN FAULT



PHASE I



PHASE 2



PHASE 3

**LEGEND**

- ▲ STRIKE LINES (200' INTERVAL)
- ▲ ACTIVE FAULTS
- ▲ LOW ANGLE THRUSTS
- ▲ TRANSCURRENT
- D/U HIGH ANGLE REVERSE
- D/U OBLIQUE SLIP WITH MAJOR COMPONENT TRANSCURRENT
- ▲ FOLDS
- ▲ LOONGANAN
- ▲ EUGENANAN

0 40 80 120 160 CHAINS  
0 1 2 MILES

K. L. BURNS  
GEOLOGIST  
1962

Reference to p. 17