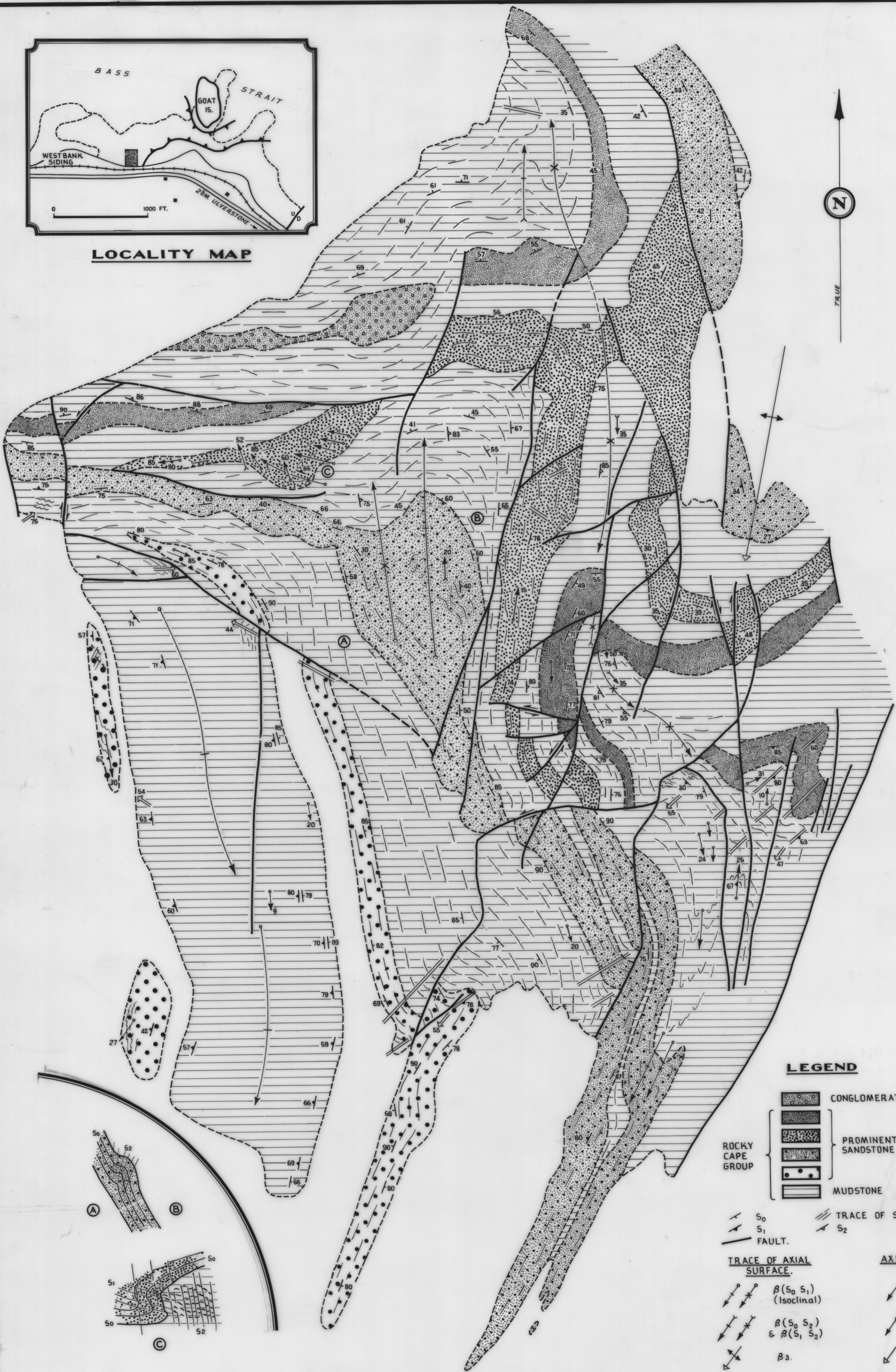
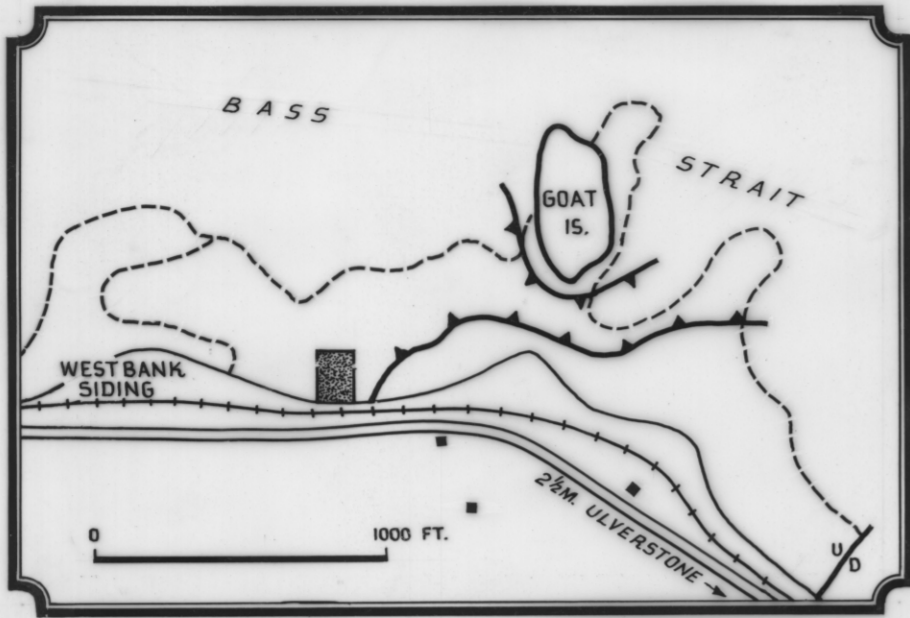


5 cm



LEGEND

- CONGLOMERATE.
- ROCKY CAPE GROUP
- PROMINENT SANDSTONE
- MUDSTONE
- S₀
- S₁
- S₂
- FAULT.
- TRACE OF AXIAL SURFACE.
- AXIS.
- β(S₀ S₁) (Isoclinal)
- β(S₀ S₂) & β(S₁ S₂)
- β₃.
- β₄.

GENERAL GEOLOGICAL MAP
VICINITY OF WESTBANK SIDING

41235 E, 9335 N

0 10 20 30 40 FEET.

K. L. BURNS
GEOLOGIST 1963