

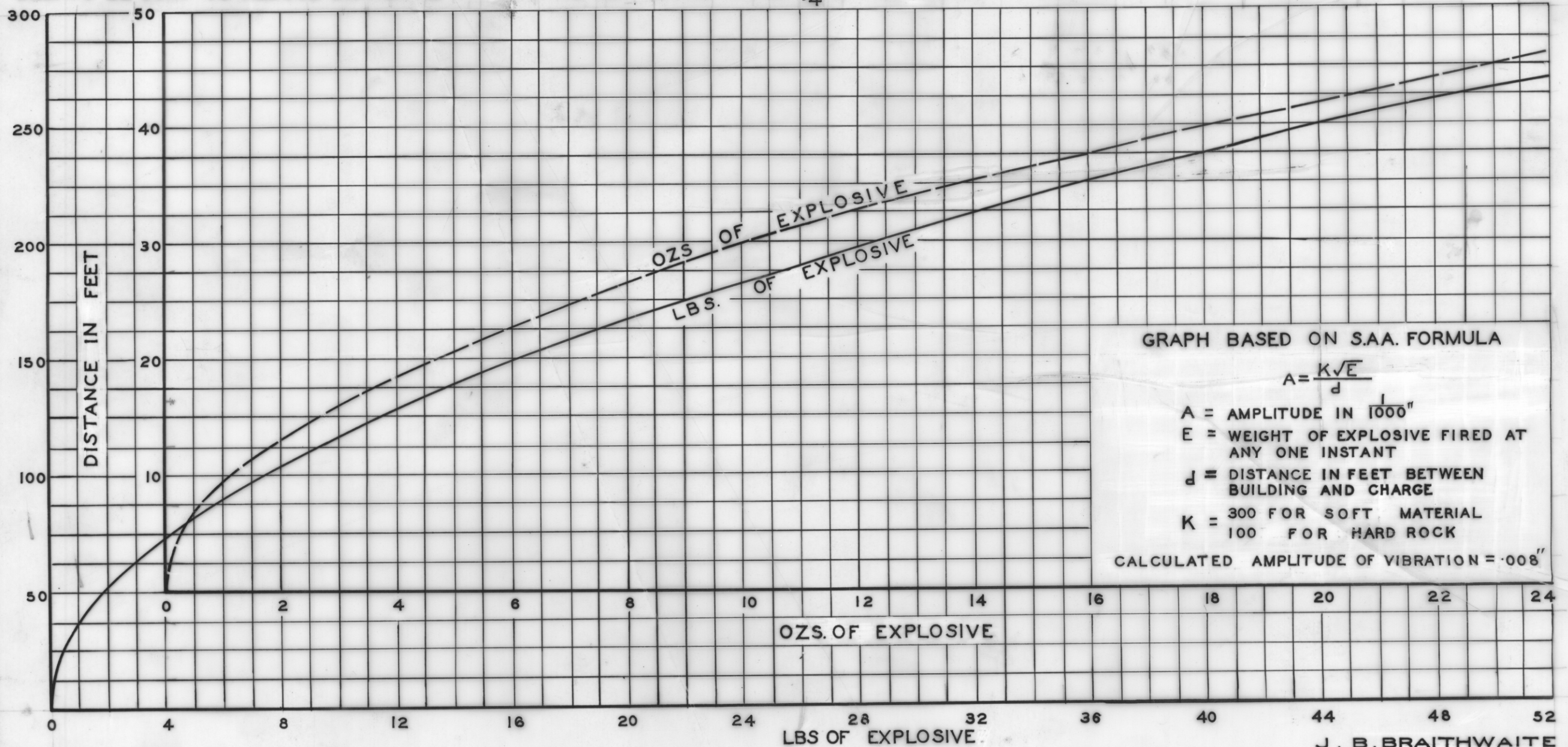
2262

314

5 cm

# BLASTING NEAR BUILDINGS

THE CHARGES SHOWN BELOW ARE THE MAXIMUM THAT SHOULD BE USED TO ENSURE THAT NO DAMAGE WILL BE CAUSED TO BUILDINGS. THESE CHARGES CAUSE ANNOYANCE AND IT IS RECOMMENDED THAT PARTICULARLY WITH LARGER BLASTS, MILLI SECOND DELAYS BE USED TO REDUCE INDIVIDUAL CHARGES TO NOT MORE THAN  $\frac{1}{4}$  OF THE WEIGHT INDICATED BY THE GRAPHS



GRAPH BASED ON S.A.A. FORMULA

$$A = \frac{K\sqrt{E}}{d}$$

A = AMPLITUDE IN  $\frac{1}{1000}$ "

E = WEIGHT OF EXPLOSIVE FIRED AT ANY ONE INSTANT

d = DISTANCE IN FEET BETWEEN BUILDING AND CHARGE

K = 300 FOR SOFT MATERIAL  
100 FOR HARD ROCK

CALCULATED AMPLITUDE OF VIBRATION = .008"