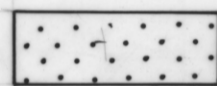


5 cm

GEOLOGICAL MAP SHOWING ROCK DISTRIBUTION BLYTHE HEADS

0 300 600 900
FEET.



UNCONSOLIDATED WHITE SAND



SEMI CONSOLIDATED SAND & GRAVEL



PRECAMBRIAN QUARTZITE

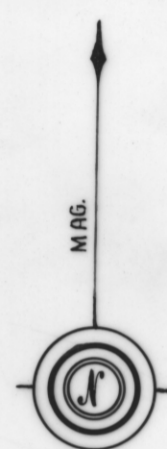
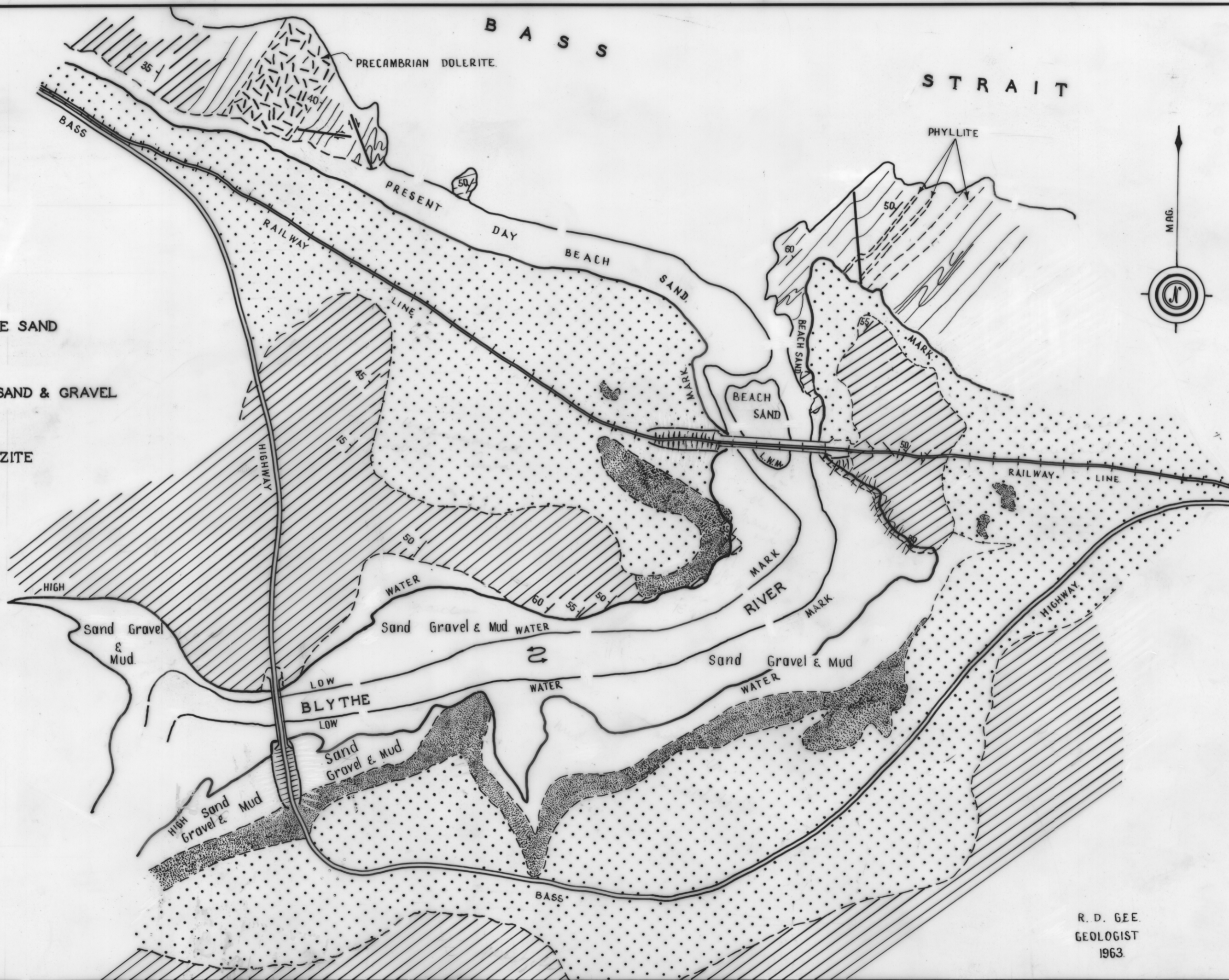


LOCALITY MAP

DEPT. OF MINES HOBART

2274 - 28

R. D. GEE
GEOLOGIST
1963.



Handwritten vertical note on the left margin: "Blythe Heads 1500 ft 5000 ft"

Handwritten note at the bottom right: "Blythe Heads"