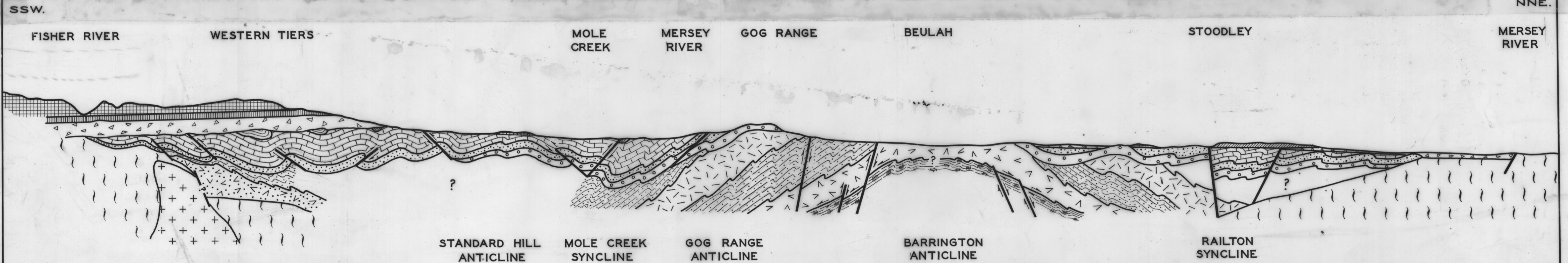


Return to 42 m

5 cm

GEOLOGICAL SECTION ACROSS WESTERN TIERS AND GOG RANGE



- | | | | | | | | |
|----------|------------|---------------------|----------|----------------------|----------|--------------------------------|--------------|
| TRIASSIC | ORDOVICIAN | GORDON LIMESTONE | CAMBRIAN | CHERT | CAMBRIAN | SODIC RHYOLITE & KERATOPHYRE | BASALT |
| PERMIAN | | MOINA SANDSTONE | | BASIC LAVA & SPILITE | | POTASH LAVA | DOLERITE |
| SILURIAN | | ROLAND CONGLOMERATE | | GREYWACKE | | PRECAMBRIAN SCHIST & QUARTZITE | DOVE GRANITE |

0 1 2 3 MLS.

0 1 2 3 4 KILOS.