

Castean

Shaft or Pit

Old workings (alluvial Au)

Strike & dip of bedding

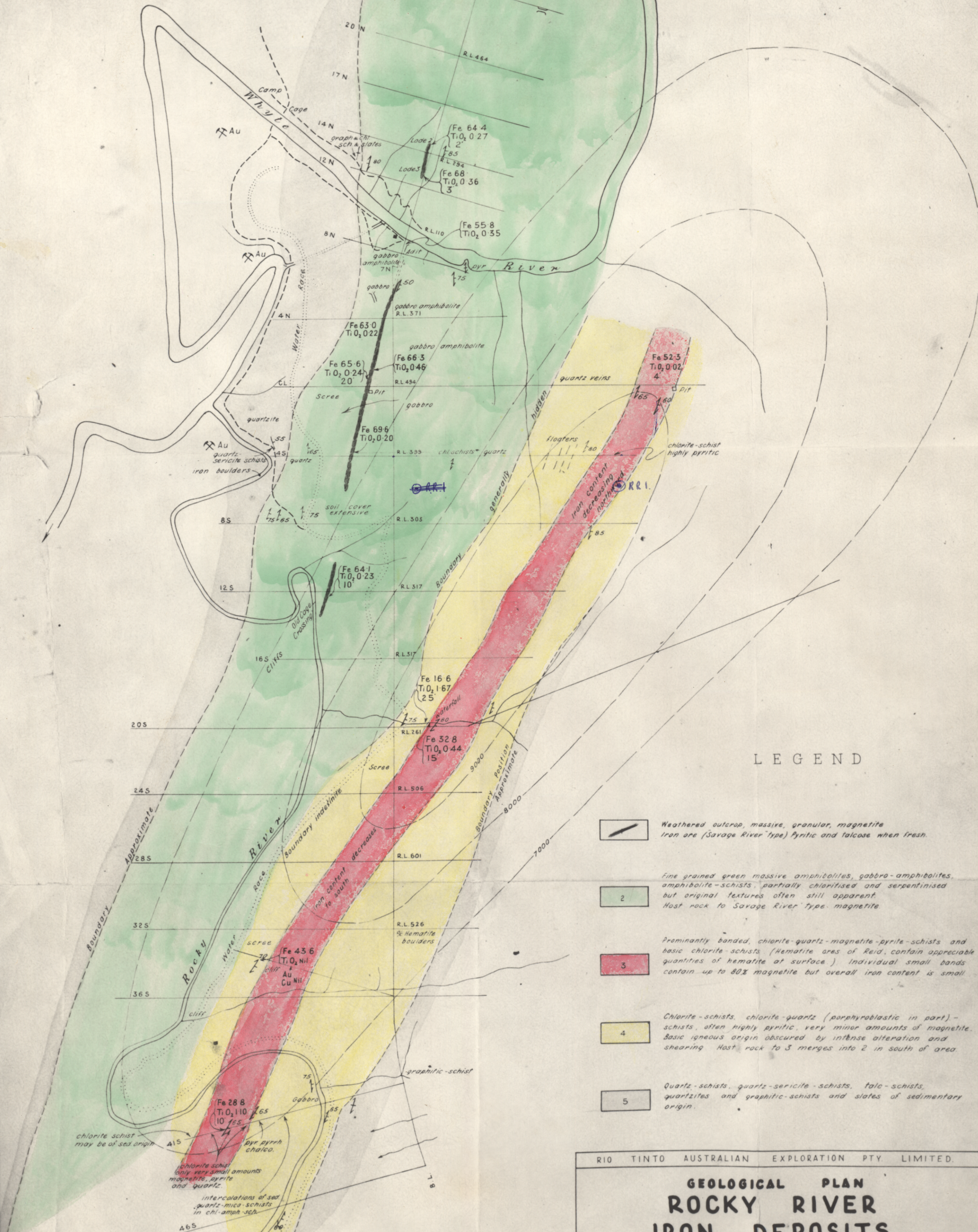
Strike & dip of schistosity

Sample position - value HCl sol Fe and width
If width not shown, assume to be grab sample.

Fe 47.1
TiO₂ 1.43
10'

Approximate position of Aeromagnetic contours
(interval 1000x) Adastral Survey. Contour shape
and position are distorted due to inaccuracy
of grid and topography of map.

7000



LEGEND

- Weathered outcrop, massive, granular, magnetite iron ore (Savage River type) pyritic and talcose when fresh.
- Fine grained green massive amphibolites, gabbro-amphibolites, amphibolite-schists, partially chloritised and serpentinised but original textures often still apparent. Host rock to Savage River type magnetite.
- Predominantly banded, chlorite-quartz-magnetite-pyrite-schists and basic chlorite-schists (hematite ores of Reid, contain appreciable quantities of hematite at surface). Individual small bands contain up to 80% magnetite but overall iron content is small.
- Chlorite-schists, chlorite-quartz (porphyroblastic in part)-schists, often highly pyritic, very minor amounts of magnetite. Basic igneous origin obscured by intense alteration and shearing. Host rock to 3 merges into 2 in south of area.
- Quartz-schists, quartz-sericite-schists, talc-schists, quartzites and graphitic-schists and slates of sedimentary origin.

RIO TINTO AUSTRALIAN EXPLORATION PTY. LIMITED.

**GEOLOGICAL PLAN
ROCKY RIVER
IRON DEPOSITS**

N.W. TASMANIA

SCALE 400 FT TO 1 INCH
PRP 7/100/1

APRIL 1960 T687