

2371

41

5 cm

S.W.

N.E.

GEOLOGICAL SECTION

MUDDY PLAINS HILL TO NUNAMARA

0 40 80 120 160 CHNS

MUDDY PLAINS HILL

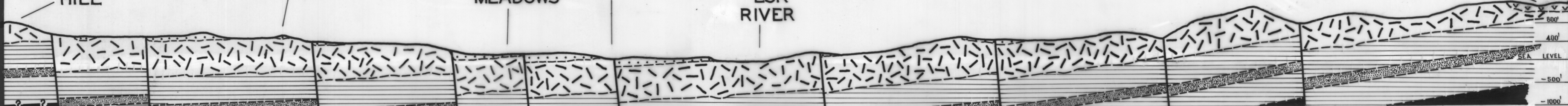
PROSPECT

KINGS MEADOWS

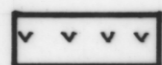
PUNCHBOWL

NORTH
ESK
RIVER

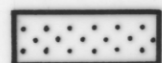
DISTILLERY CK



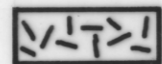
NB VERTICAL EXAGGERATION 3:2



BASALT



TERTIARY SEDIMENTS

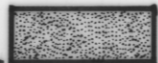


DOLERITE

PERMIAN



PERMIAN UNDIFFERENTIATED



LIFFEY SANDSTONE



SILURIAN ?

M.J. LONGMAN.
GEOLOGIST

DEPT. OF MINES · HOBART ·

1964

2371-39