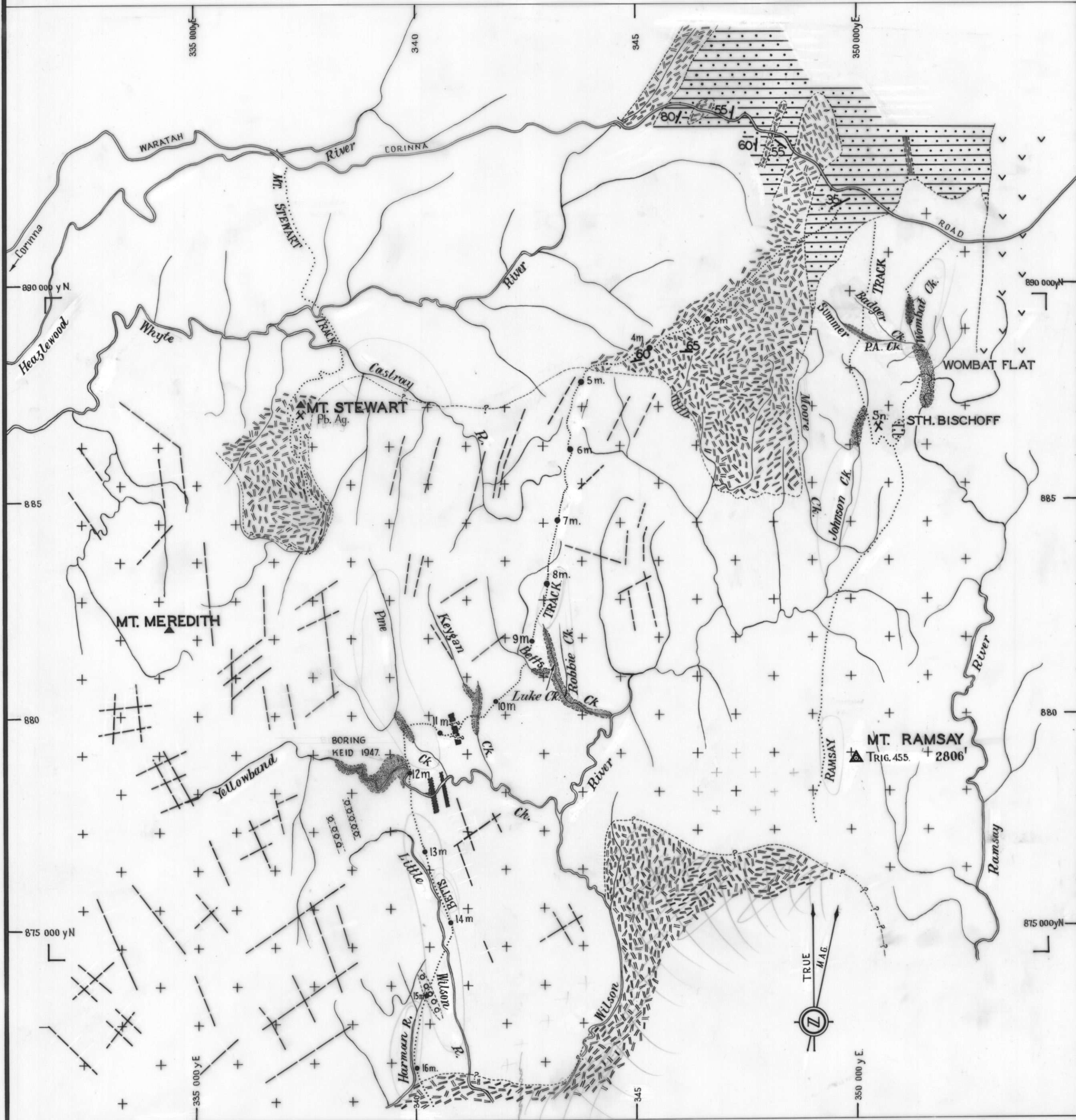


5 cm

GEOLOGICAL RECONNAISSANCE — MT. MEREDITH AREA

0 1 2 3 4
MILES



- | | | | | | |
|-------------|---|--|-------------------------------------|--|--------------------------------|
| PLEISTOCENE | { | | TIN BEARING GRAVELS | | GEOLOGICAL BOUNDARY (APPROX) |
| TERTIARY | { | | BASALT FLOW | | GEOLOGICAL BOUNDARY (INFERRED) |
| | | | BASALT DYKE | | REGIONAL JOINT PATTERN |
| DEVONIAN | { | | ADAMELLITE | | STRIKE & DIP |
| | | | TOURMALINE NODULE ZONE | | MINE |
| | | | PEGMATITE ZONE | | MOUNTAIN |
| CAMBRIAN | { | | QUARTZ PORPHYRY DYKE | | ROAD |
| | | | MUDSTONES & SANDSTONES | | PACK TRACK |
| | | | DOMINANTLY BASIC & ULTRABASIC ROCKS | | |

R. JACK
D.I. GROVES
GEOLOGISTS
DEPT. OF MINES HOBART

MAY 1964