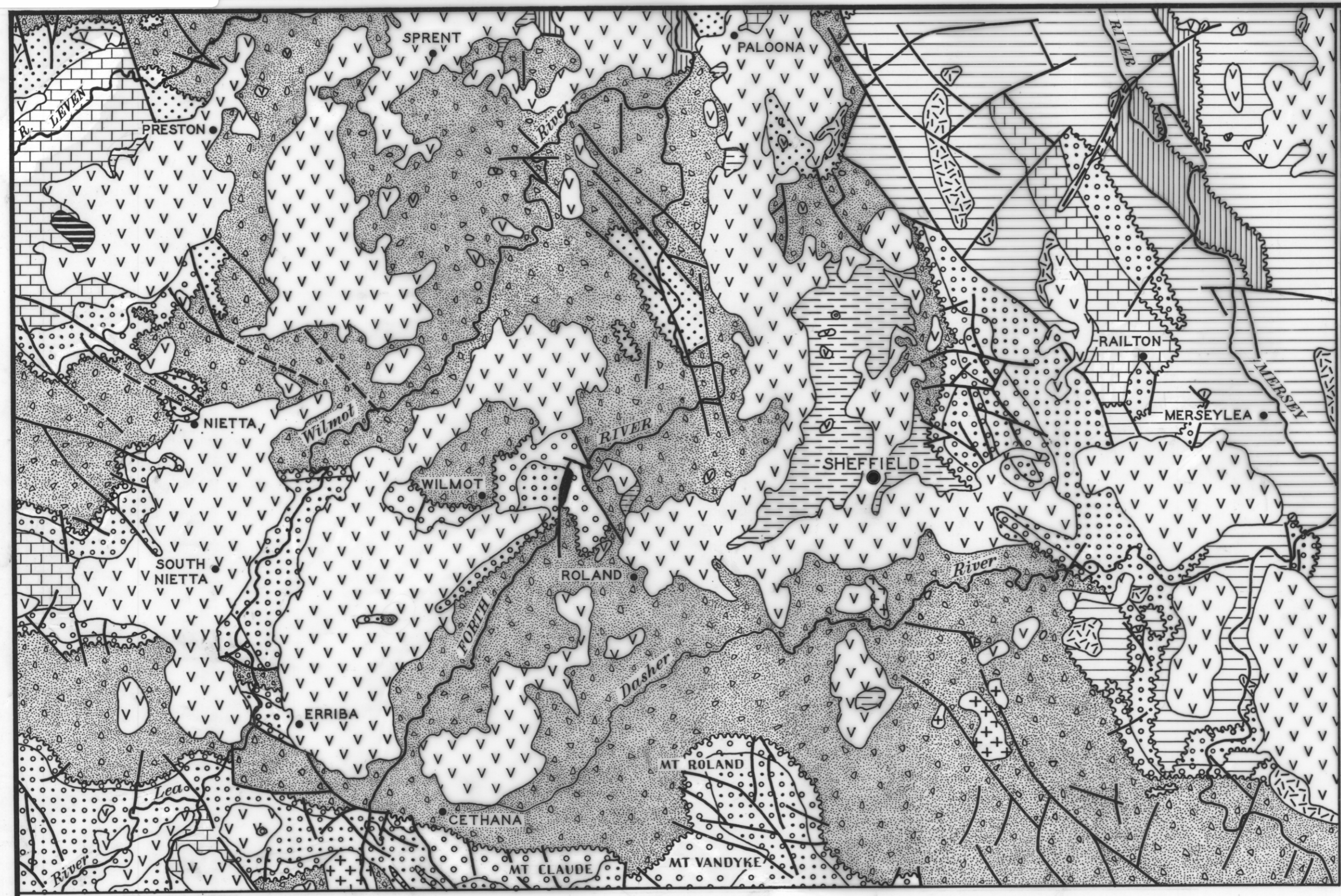


5 cm

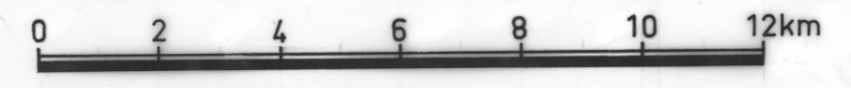


**LEGEND**

- TERTIARY.
  - PERMIAN.
  - SILURIAN.
  - ORDOVICIAN.
    - LIMESTONE
    - SANDSTONE.
    - ROLAND CONG.
    - DIAL CONG.
  - CAMBRIAN
  - PRECAMBRIAN
- IGNEOUS ROCKS**
- TERTIARY BASALT.
  - JURASSIC DOLERITE.
  - DEVONIAN GRANITE.
  - CAMBRIAN ? QUARTZ DOLERITE.
- UNCONFORMITY
  - FAULT.



**SOLID GEOLOGY — SHEFFIELD QUADRANGLE**



2451-37

I. B. JENNINGS  
SEN. GEOLOGIST 1964.

REDUCE TO 120MM