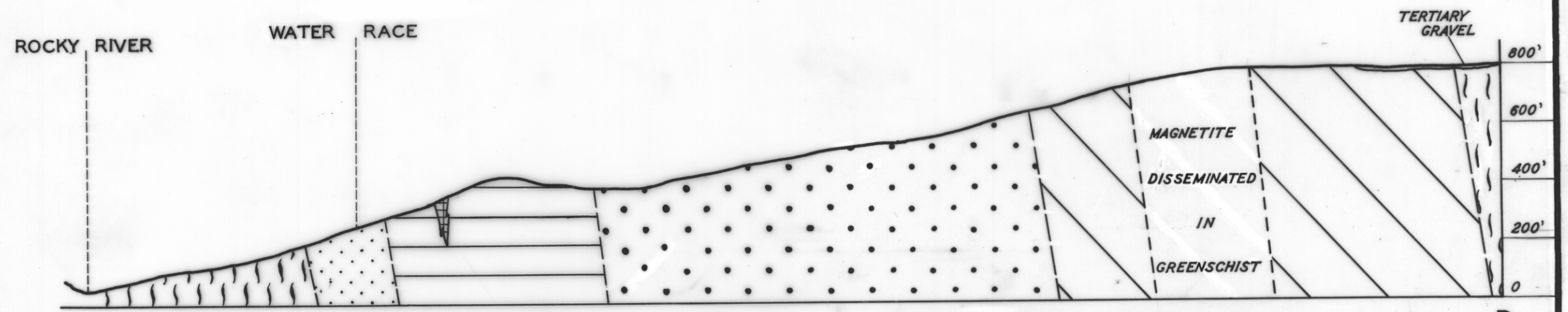
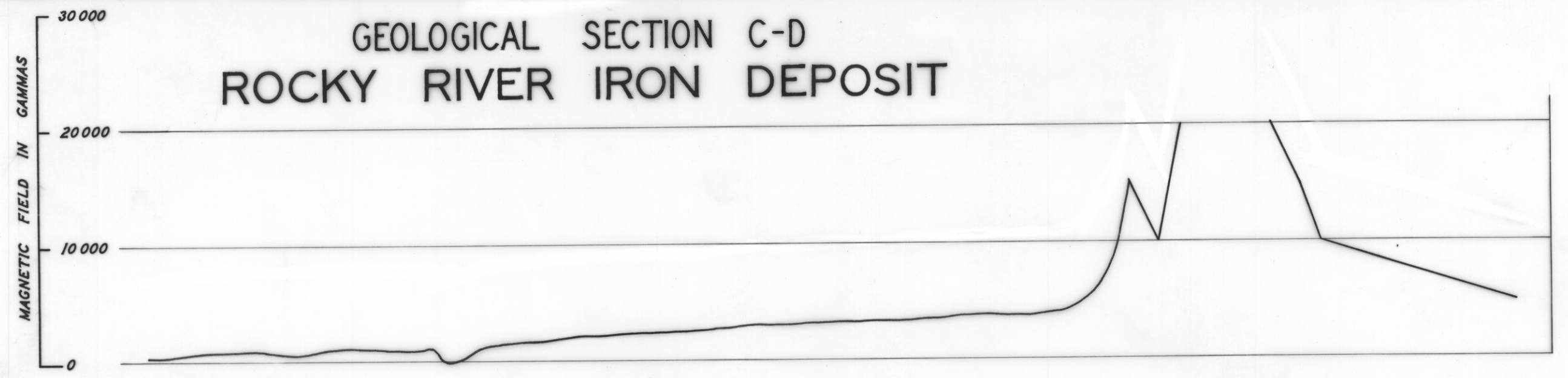


499

5 cm

# GEOLOGICAL SECTION C-D ROCKY RIVER IRON DEPOSIT



- |           |  |  |                        |           |  |
|-----------|--|--|------------------------|-----------|--|
| CAMBRIAN? |  | MASSIVE OR FOLIATED AMPHIBOLITE                                      | LOWER ?<br>PRECAMBRIAN |           | PORPHYROBLASTIC METASOMATIC<br>CHLORITE SCHIST     |
|           |  | SHEARED METASOMATIC QUARTZ-FELDSPAR<br>SCHIST AND AMPHIBOLITE SCHIST |                        |           | WHYTE<br>SCHIST<br>SERICITE AND QUARTZ-MICA SCHIST |
|           |  | FELDSPAR-AMP-QTZ. CATACLASITE  |                        | IRON LODE |  |

0 200 400 FT.

G. URQUHART  
GEOLOGIST 1964

2459-43

Reference to 5" →