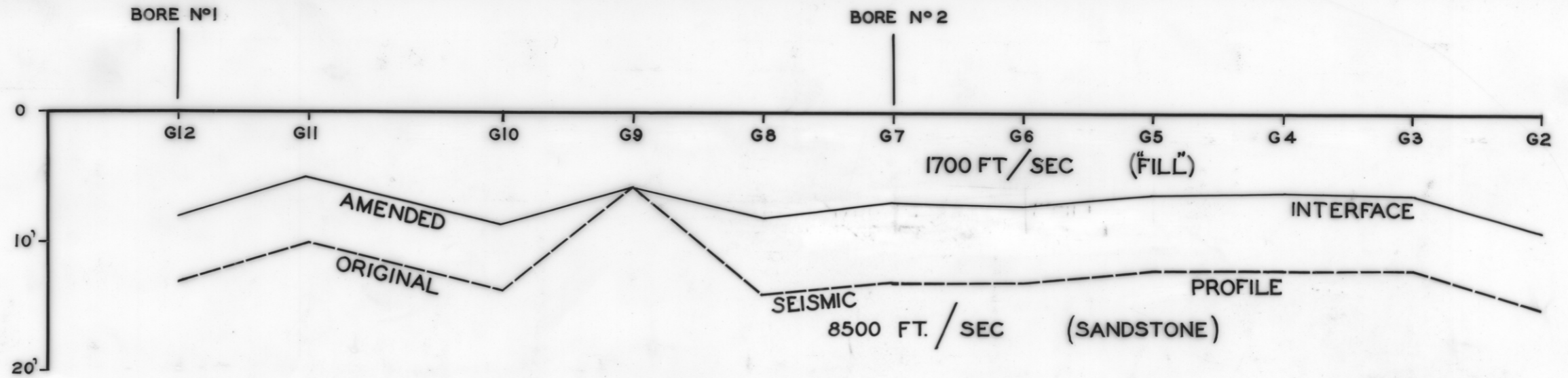
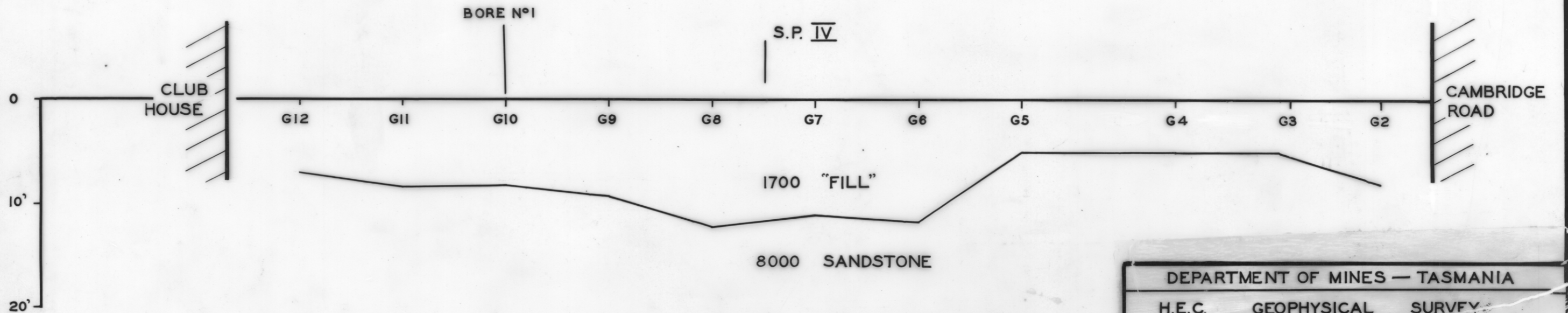


2495

53b



TRAVERSE A



TRAVERSE B

5 cm

DEPARTMENT OF MINES — TASMANIA	
H.E.C. GEOPHYSICAL SURVEY	
BELLERIVE YACHT CLUB	
DATE :— DECEMBER 1964	feet SCALE 0 10 20
G/PHYSICIST :— P.W.M. DOWELL	SURVEYOR :—
DRAUGHTSMAN :— R.J. VOSS	MAP SHEET & N° HBT. 82
REVISIONS :—	FILE N° 2495-82