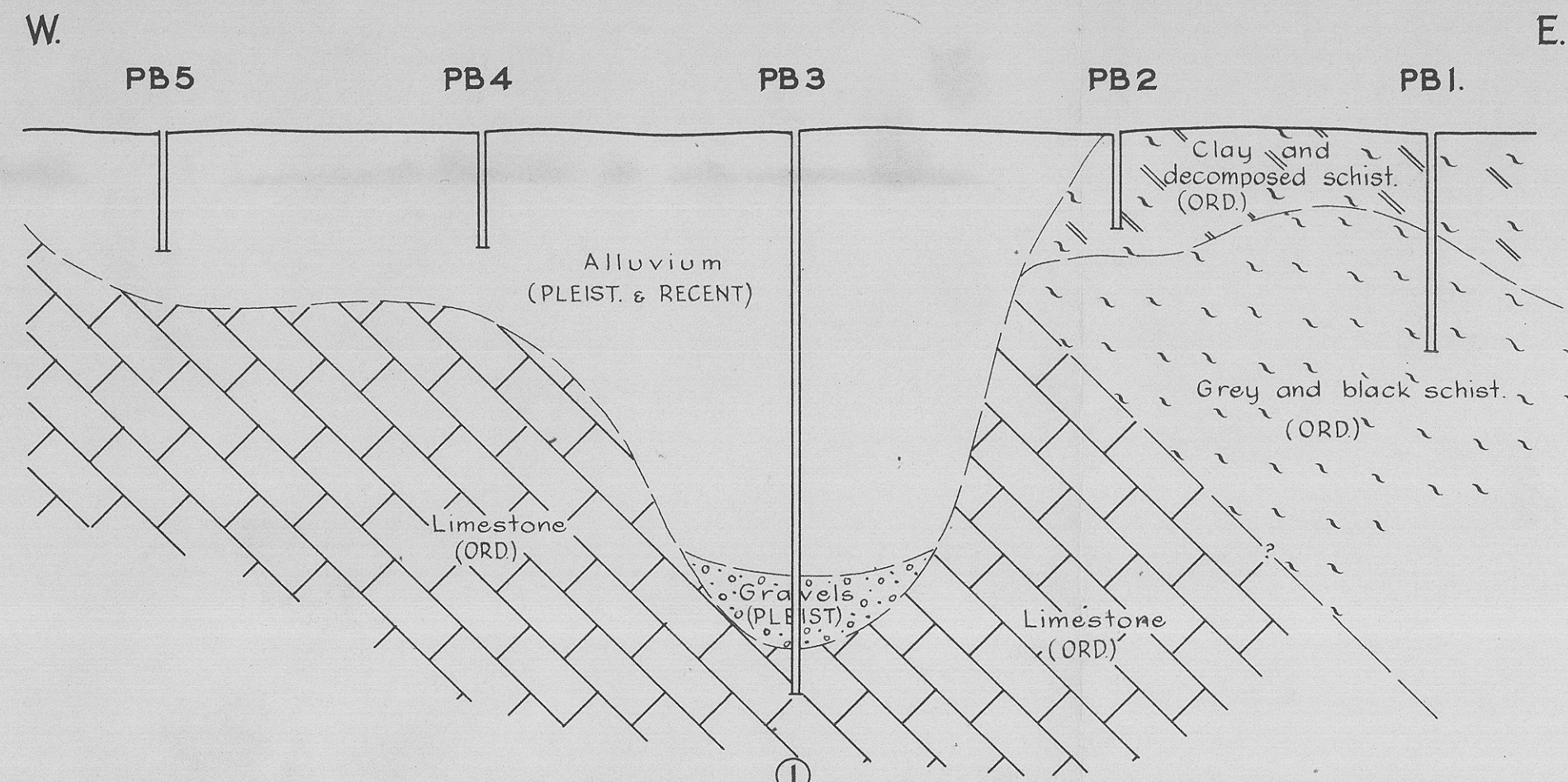


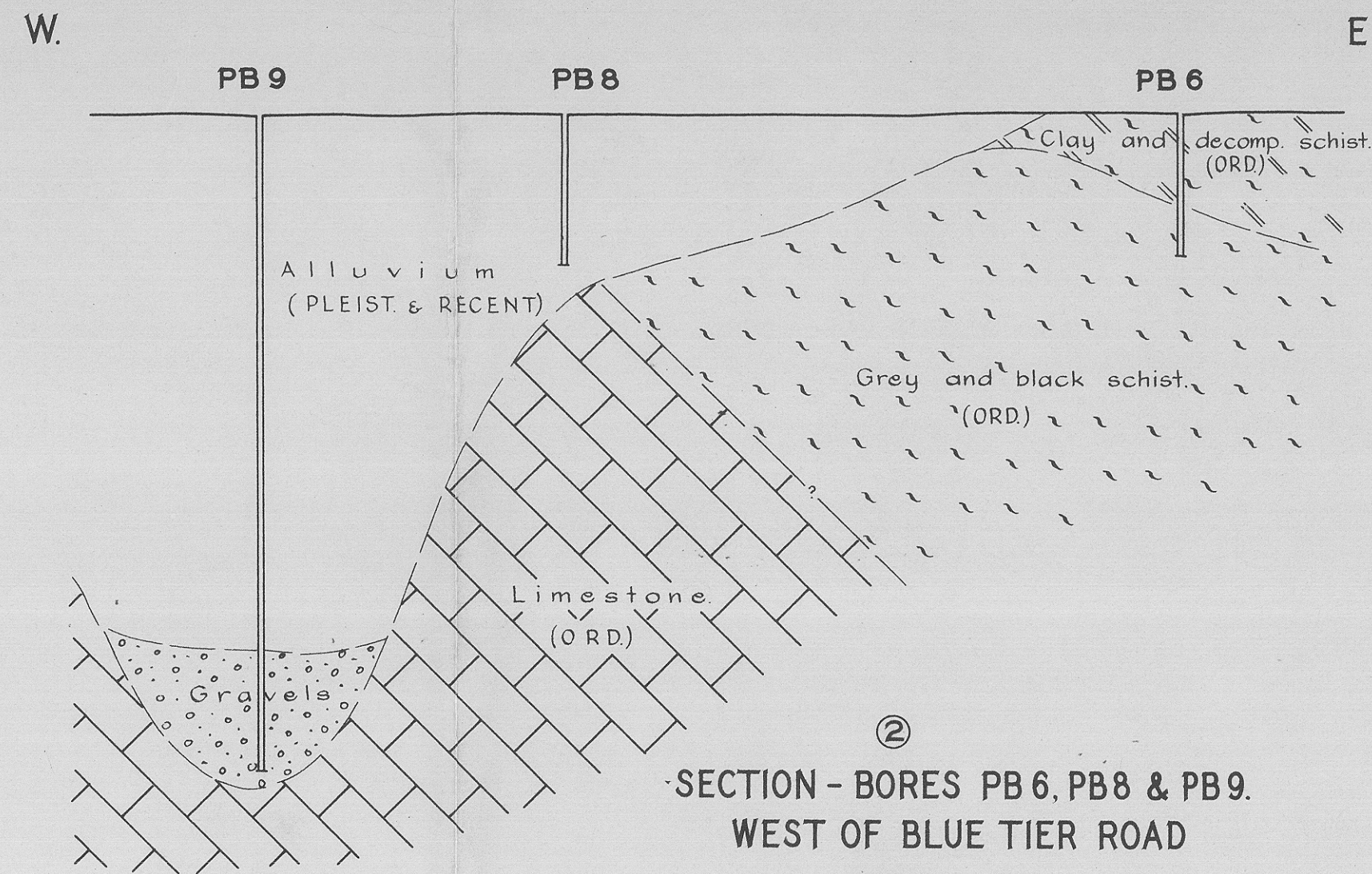
2557

593



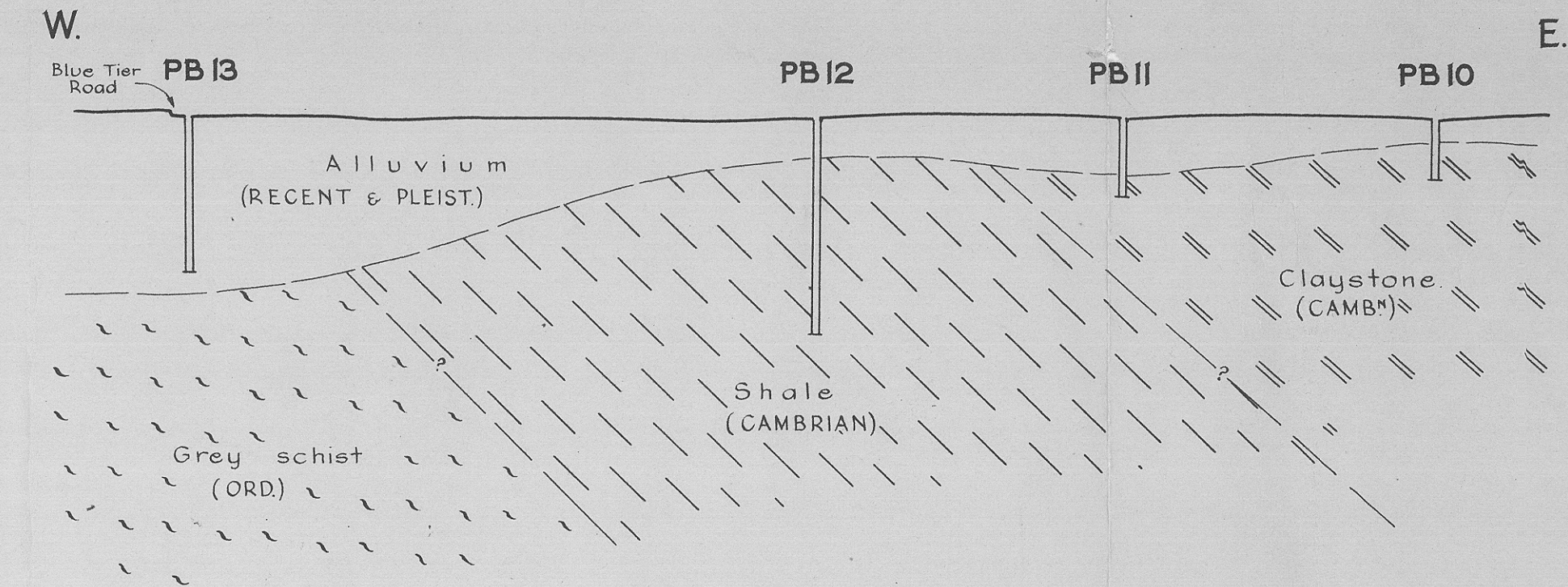
SECTION - BORES PB1-PB5.
ALONG FLOWERY GULLY ROAD

H.S. + 1" = 66'
V.S. + 1" = 40'



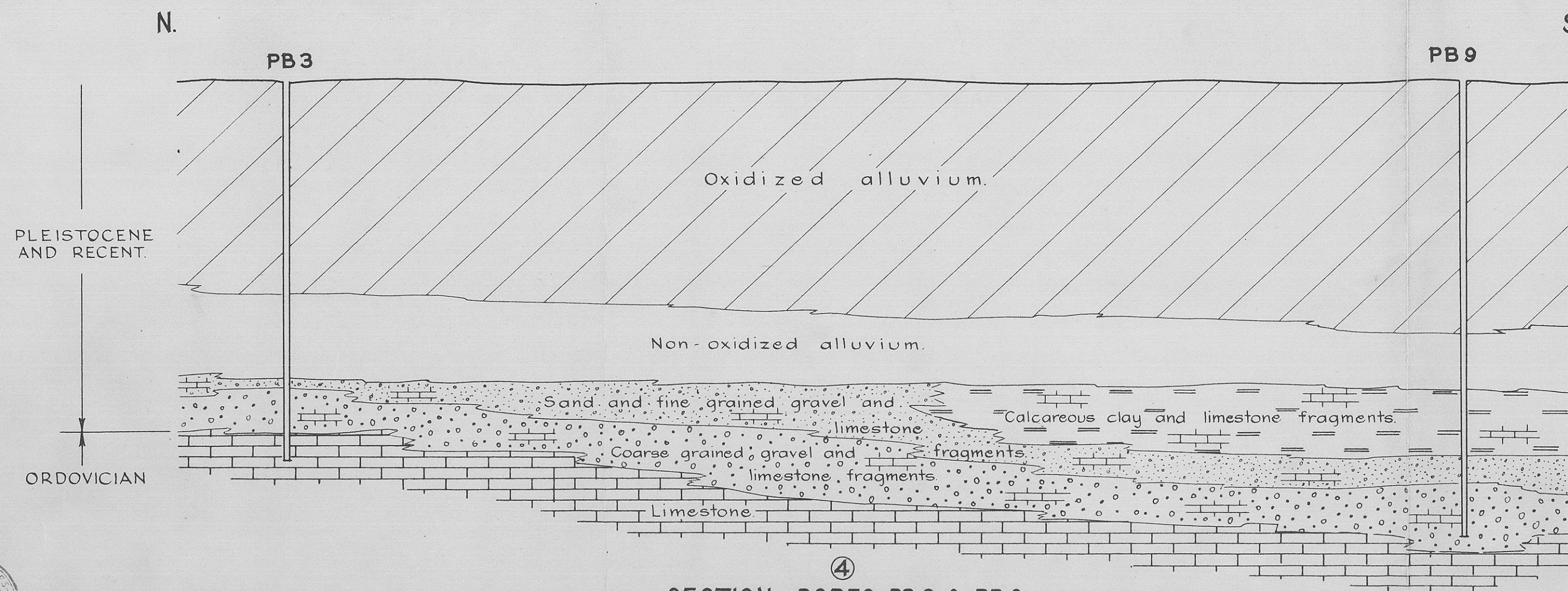
SECTION - BORES PB6, PB8 & PB9.
WEST OF BLUE TIER ROAD

H.S. + 1" = 66'
V.S. + 1" = 40'



SECTION - BORES PB10 - PB13.
EAST OF BLUE TIER ROAD

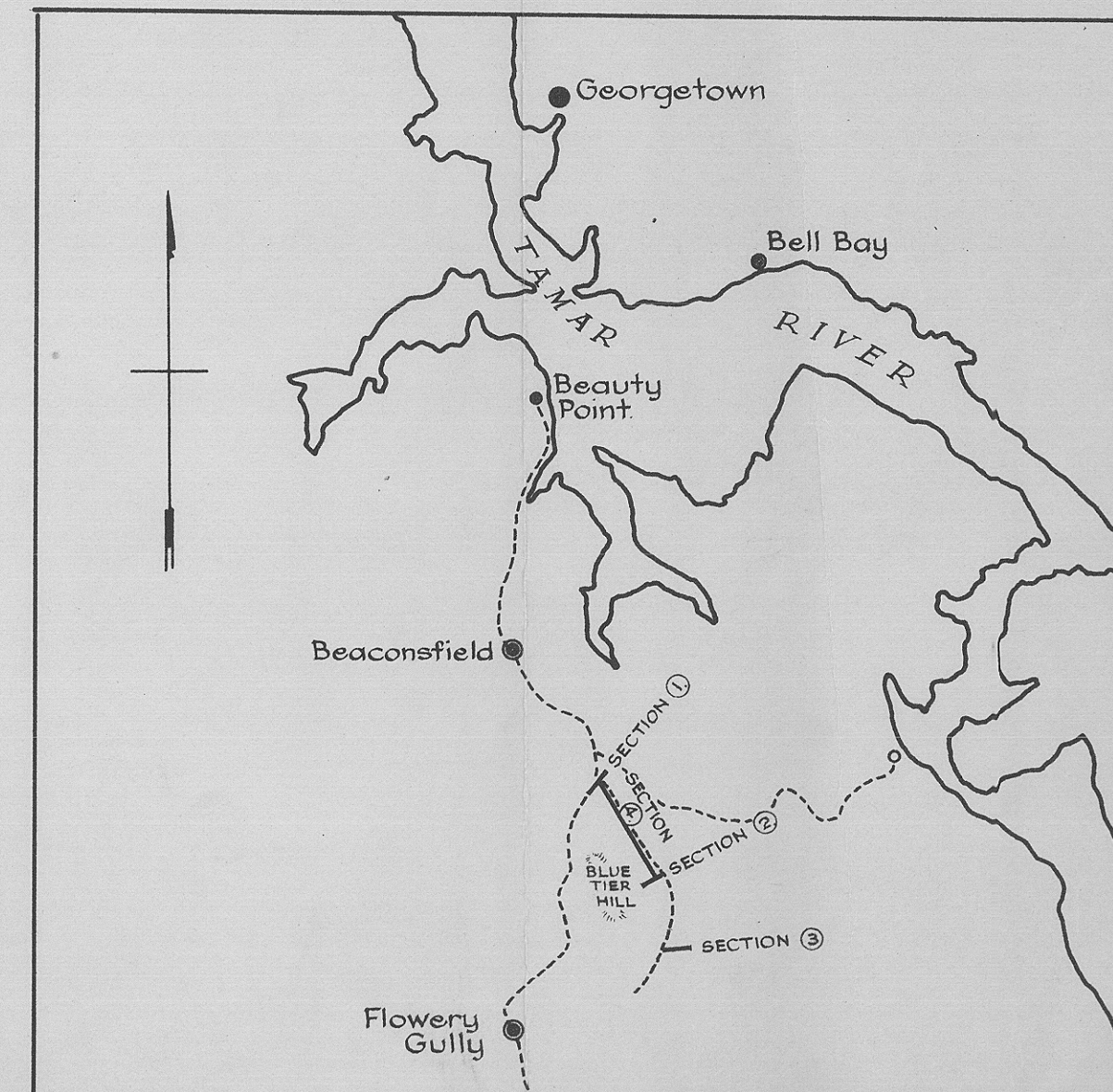
H.S. + 1" = 132'
V.S. + 1" = 40'



SECTION - BORES PB3 & PB9.
WESTERN BORDER OF BLUE TIER ROAD.

HORIZONTAL SCALE + 1" = 660'
VERTICAL SCALE + 1" = 40'

LIMESTONE - SECTIONS
BEACONSFIELD - FLOWERY GULLY AREA
TASMANIA



LOCALITY MAP
SCALE: 1 INCH = 2 MILES



2557-30

2. 8. 65 GB

G1298

