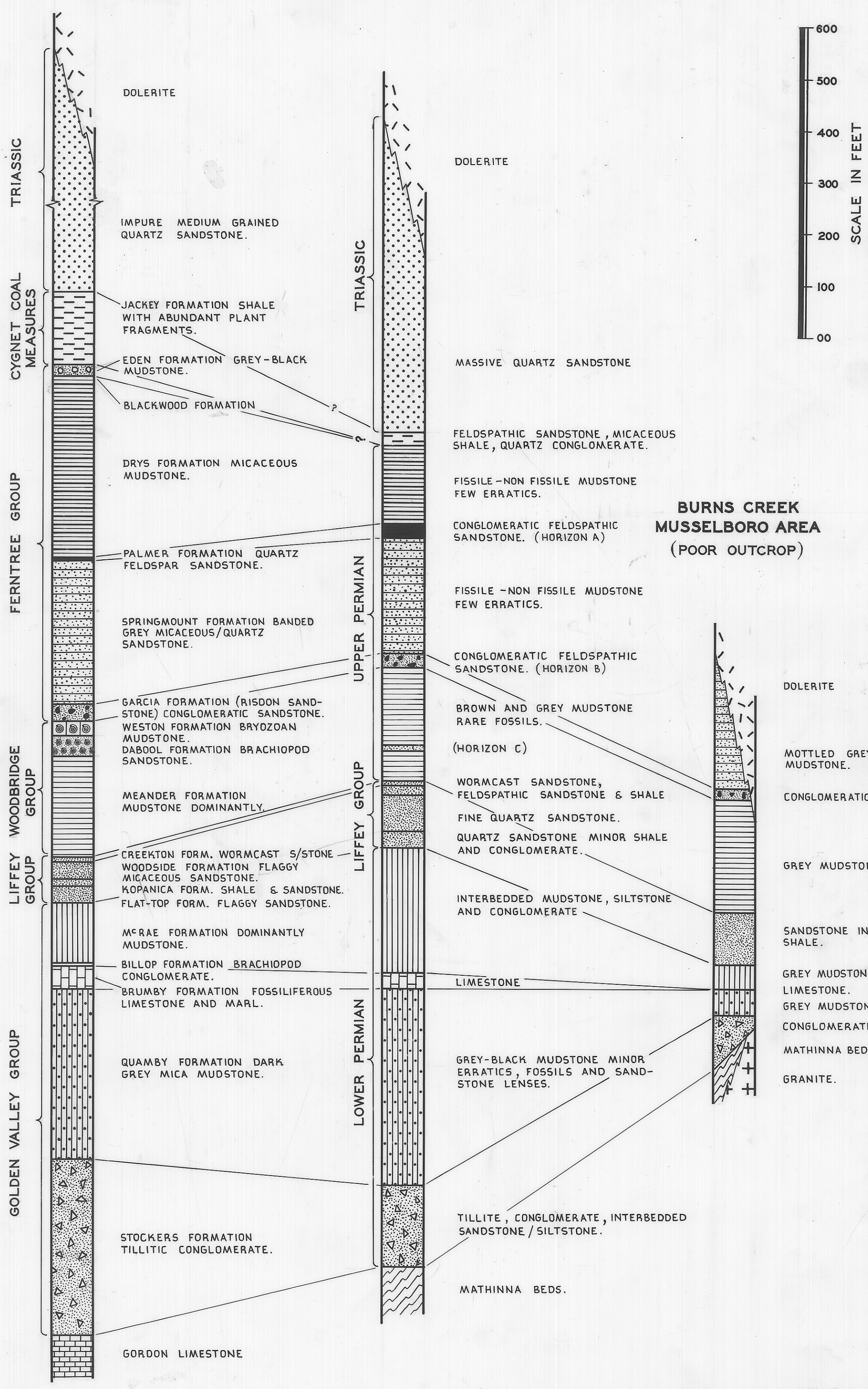


**WESTERN TIERS SECTION**  
(AFTER MCKELLAR 1957)

**LILYDALE - KARoola AREA**  
(MAXIMUM THICKNESS SHOWN)



DEPARTMENT OF MINES - TASMANIA	
CORRELATION OF PERMIAN ROCKS LAUNCESTON QUADRANGLE	
DATE <i>Sept. '65.</i>	SCALE <i>As shown</i>
GEOLOGIST <i>M. Longman</i>	SURVEYOR
DRAUGHTSMAN <i>P. Rankivell</i>	MAP SHEET & N° <i>Don 39.</i>
REVISIONS	FILE N° <b>2565A</b>

*Reduce to 4"*