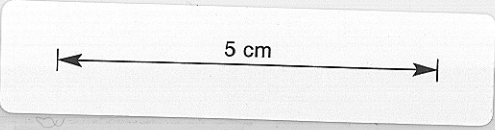
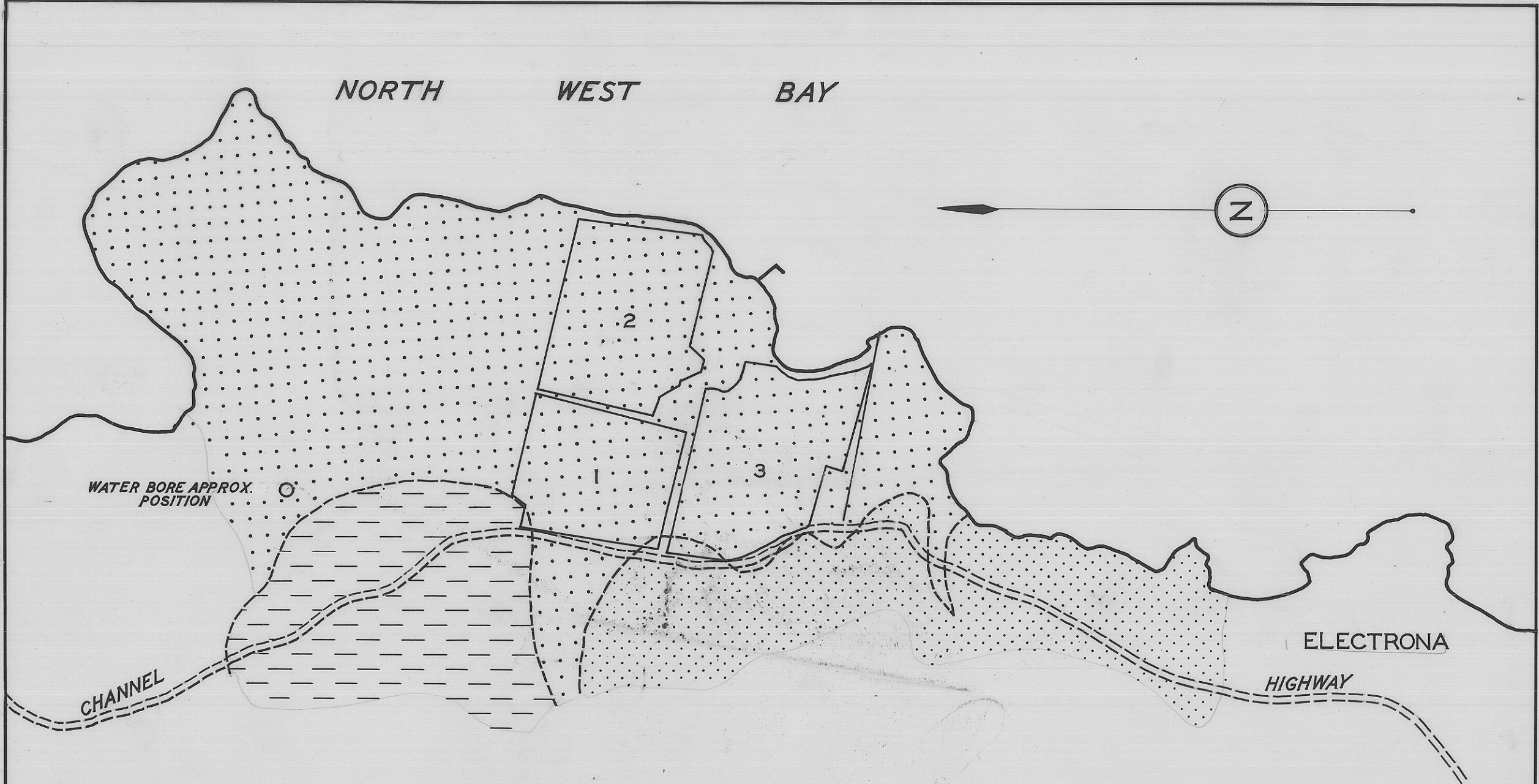
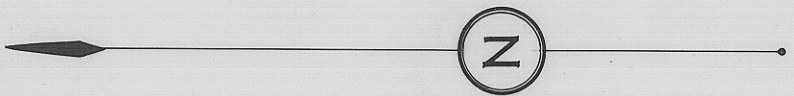


2814

663



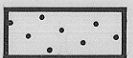

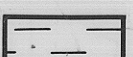
NORTH WEST BAY

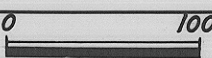


WATER BORE APPROX. POSITION

CHANNEL

ELECTRONA HIGHWAY

-  RECENT / TERTIARY — DOLERITE GRAVELS SAND & CLAY
-  TRIASSIC SANDSTONE & SHALE
-  PERMIAN — FERNTREE MUDSTONE

DEPARTMENT OF MINES — TASMANIA	
GEOLOGY — VICINITY MARGATE	
DATE:— DECEMBER 1965	SCALE  1000 FEET
GEOLOGIST:— M. J. LONGMAN	SURVEYOR:—
DRAUGHTSMAN R. J. VOSS	MAP SHEET & N° K BOROUGH 02
REVISIONS:—	FILE N°:— 2814