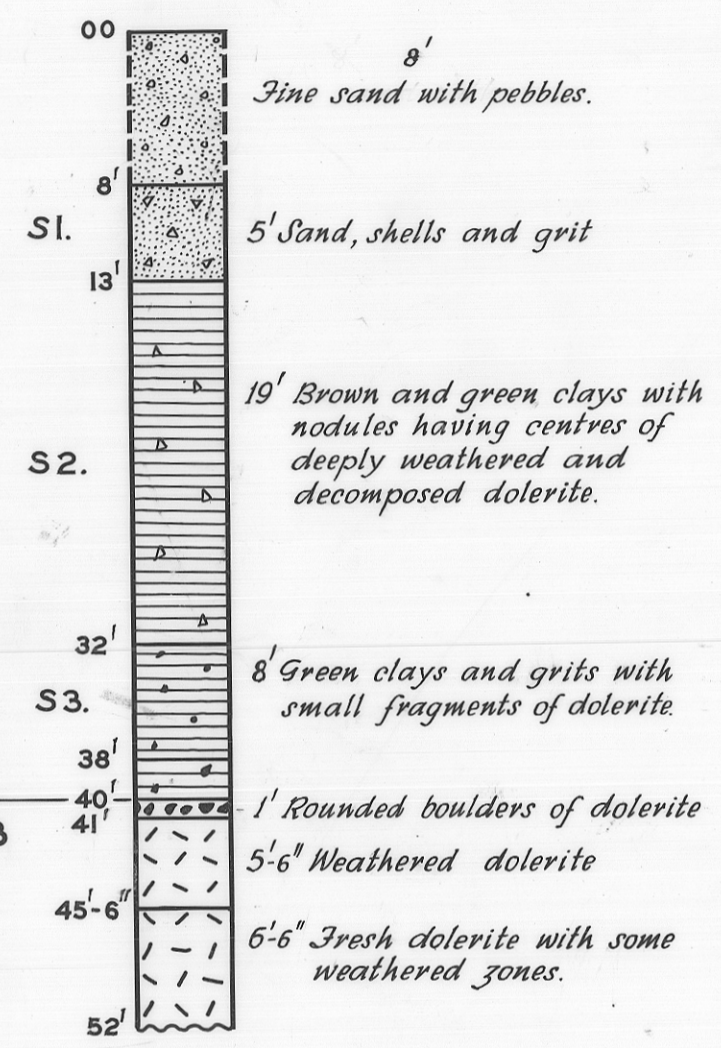


2869

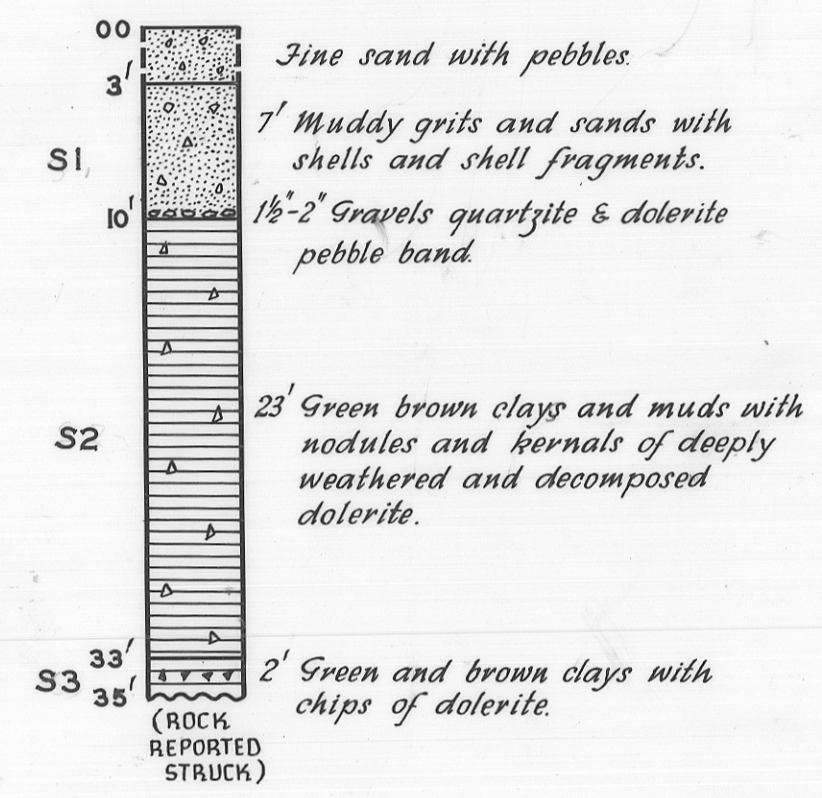
7/2

5 cm

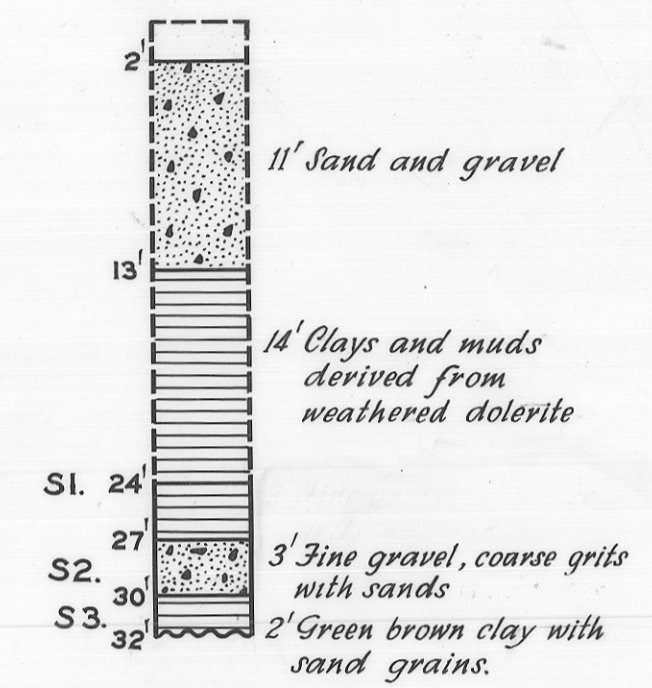
P.W.D.40  
DDH.3



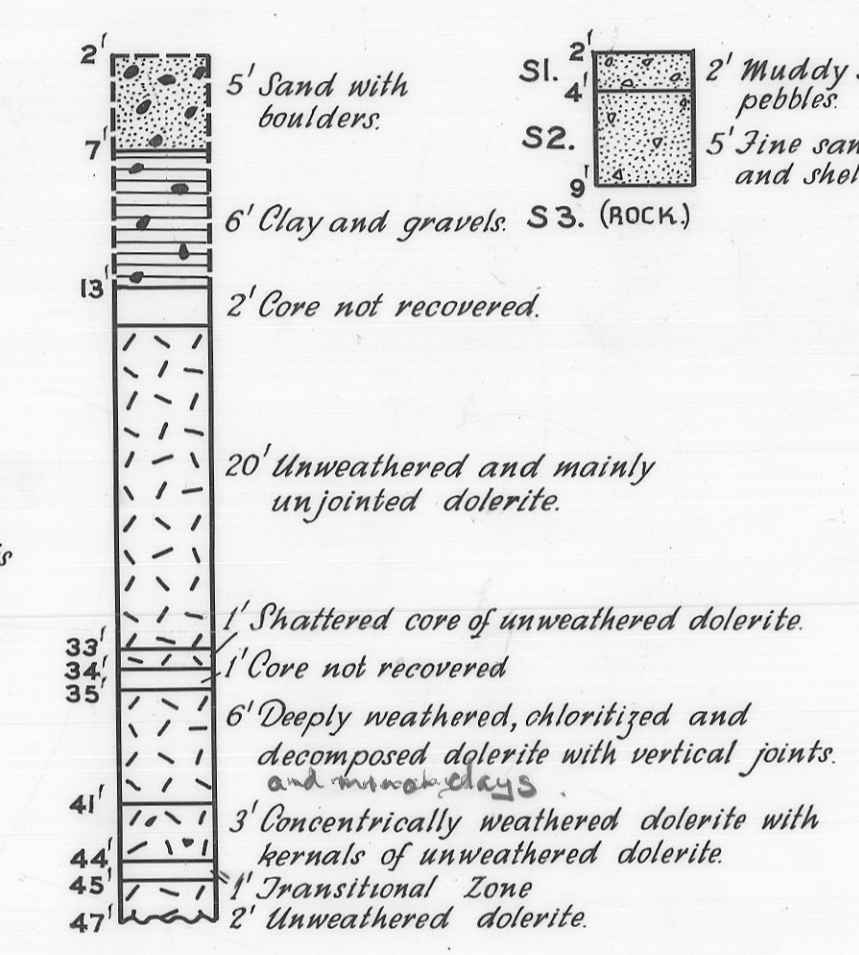
P.W.D.41



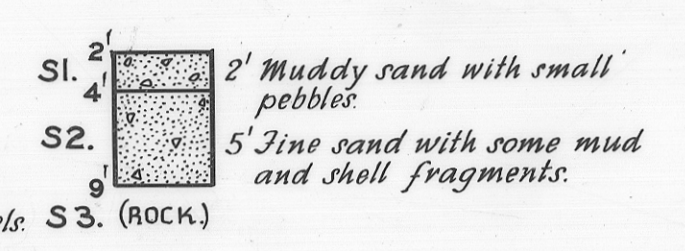
P.W.D.36



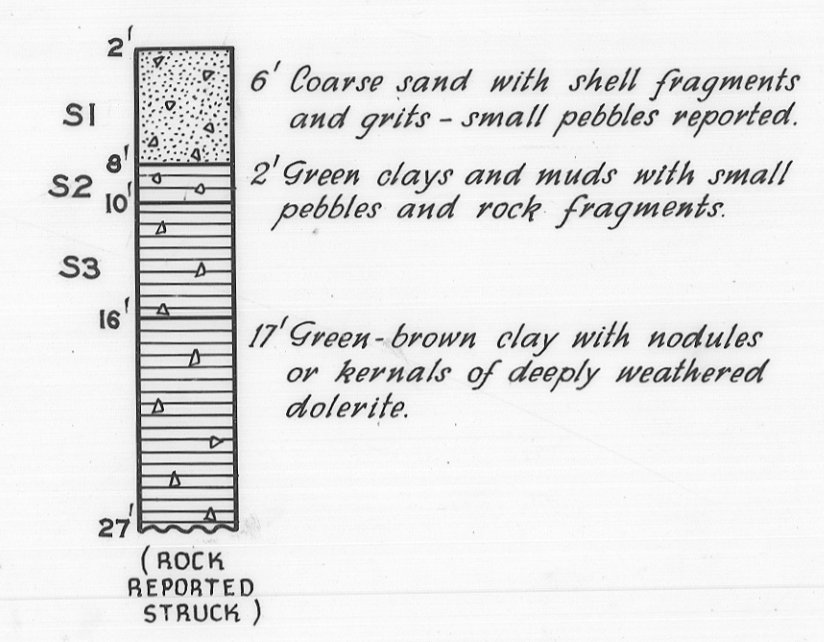
P.W.D.37  
DDH.4



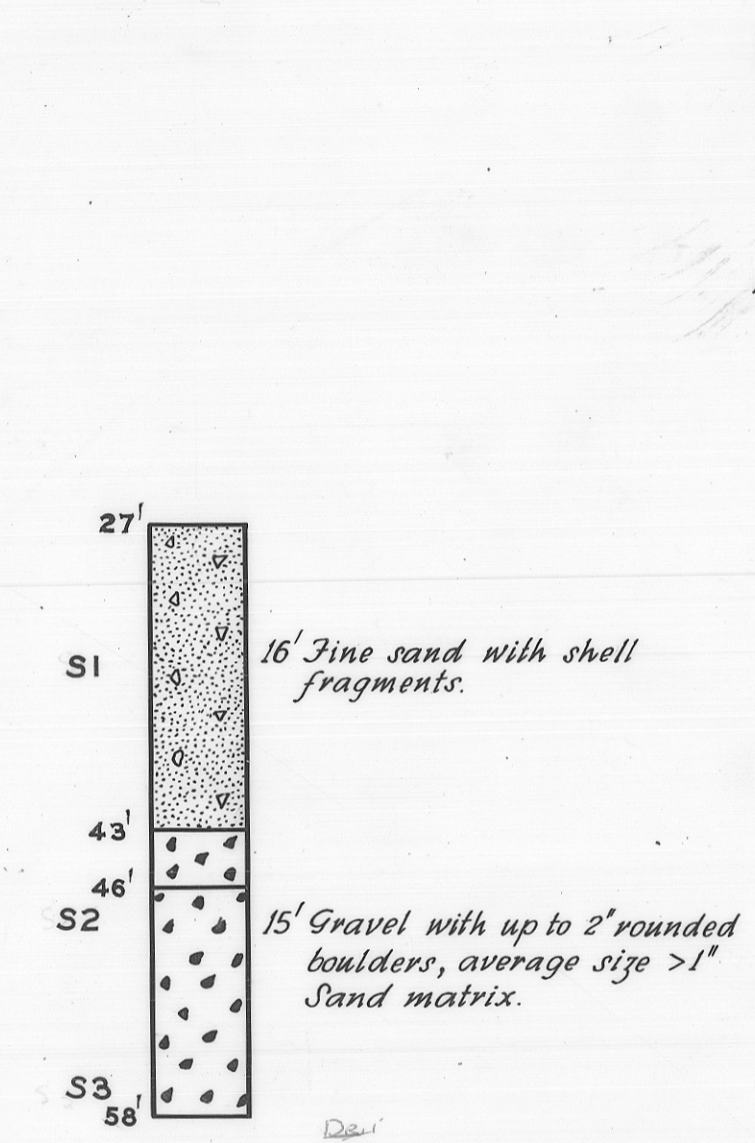
P.W.D.38



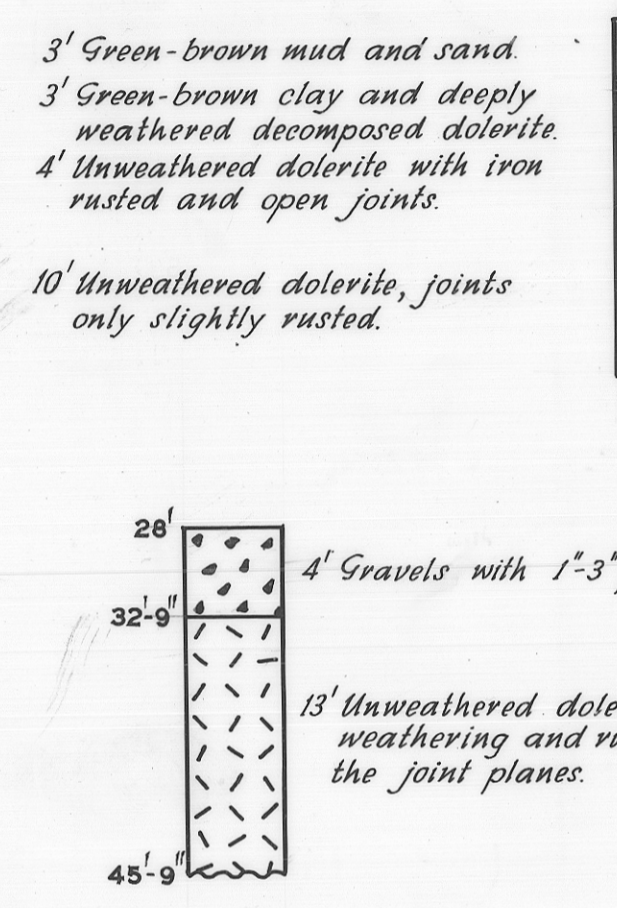
P.W.D.39



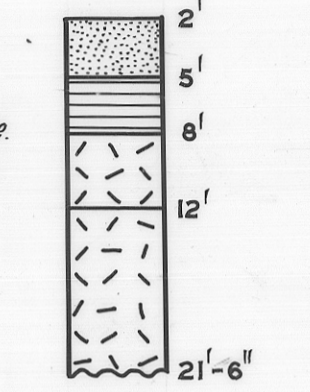
5074  
(NO P.W.D. NUMBER)



P.W.D.35  
DDH.1



DDH. 2.



**LEGEND**

- |          |  |  |          |
|----------|--|--|----------|
| P.W.D.40 | Public Works Dept. percussion drill hole.    |  | Sand     |
| DDH. 2   | Dept. of Mines diamond drill hole.           |  | Gravel   |
| S1       | Drillers sample.                             |  | Clays    |
|          | Log from drillers log. No samples collected. |  | Dolerite |
|          | Log from samples                             |  |          |

Note:- Reduced levels taken from P.W.D. "Victoria Bridge Site Investigation Plan" N°225 M.B.

DEPARTMENT OF MINES — TASMANIA	
PERCUSSION DRILL HOLES 35-41 DIAMOND DRILL HOLES 1-4 VICTORIA BRIDGE — DEVONPORT	
DATE	JUNE 1966
GEOLOGIST	W. R. MOORE
DRAUGHTSMAN	P. B. NANKIVELL
REVISIONS	
FEET  MAP SHEET & N° DEVONPORT 29 FILE N° <p style="text-align: center; font-weight: bold;">2869</p>	