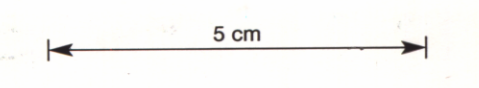


288/32



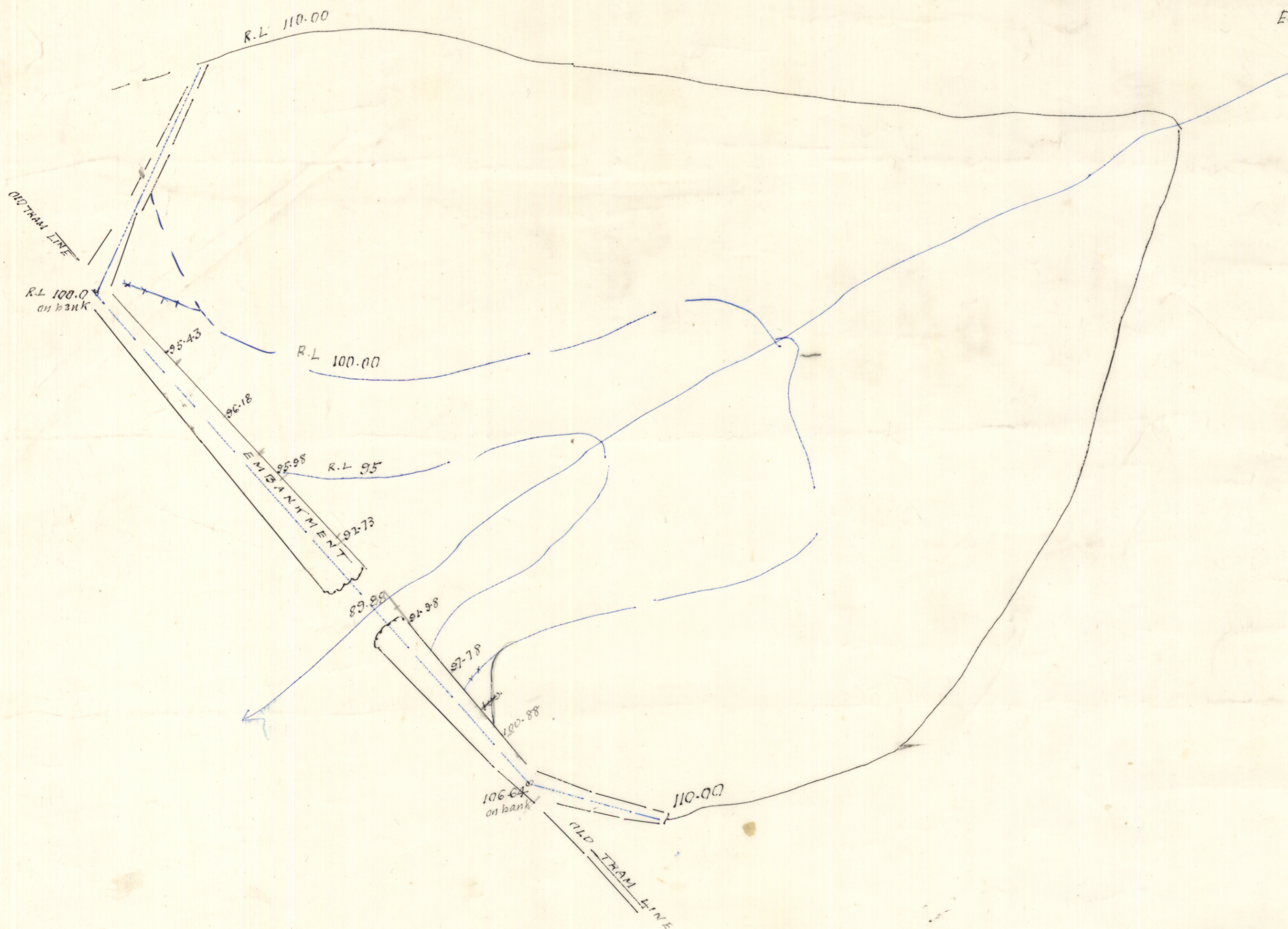
### Plan of proposed Dam (No 2) for Mt Paris Tin Mines No 2

Scale one chain to an inch

#### Capacity of Dam Site

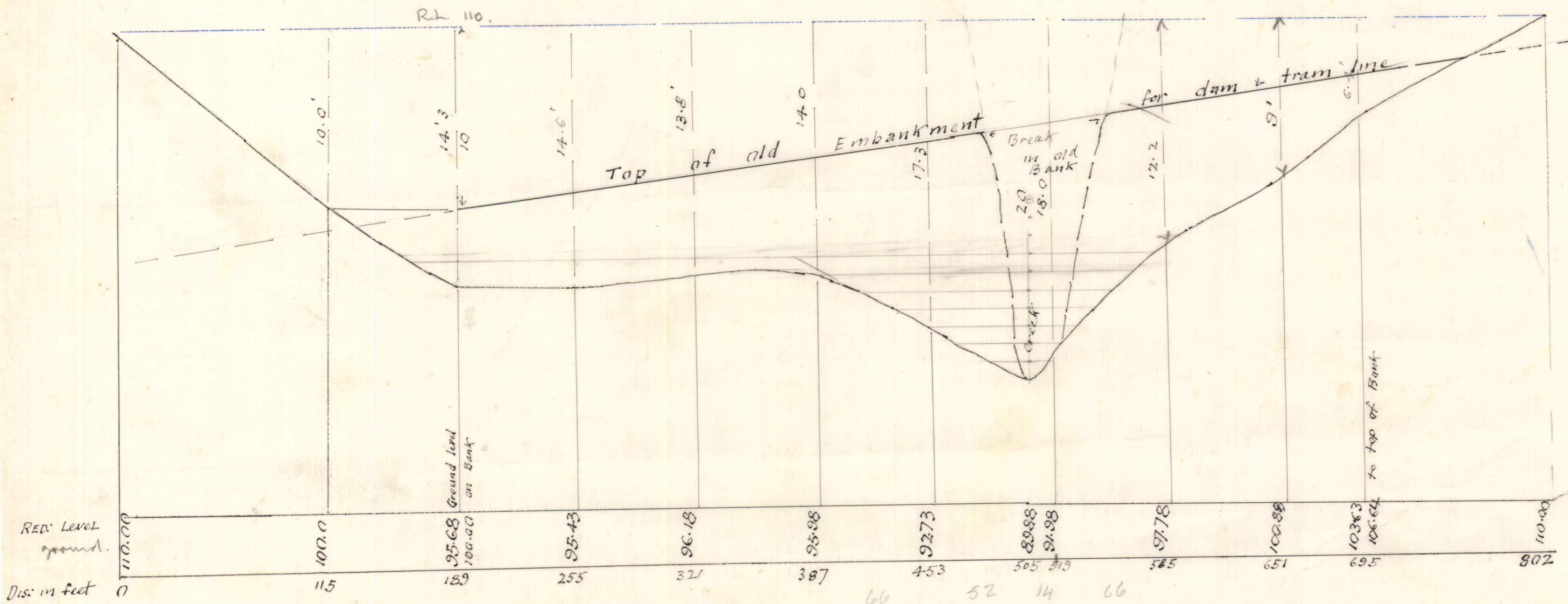
Contour	Area	Capacity in Gallons
100' contour (10')	2.00 ac	1 550 000
110 " (20')	7.8 ac	13 950 000

Estimated area of catchment 100 ac



#### SECTION ALONG LINE OF OLD EMBANKMENT

Scale 50 feet to an inch horizontal vertical 1/4"



G Campbell Smith  
District Surveyor  
31/5/27