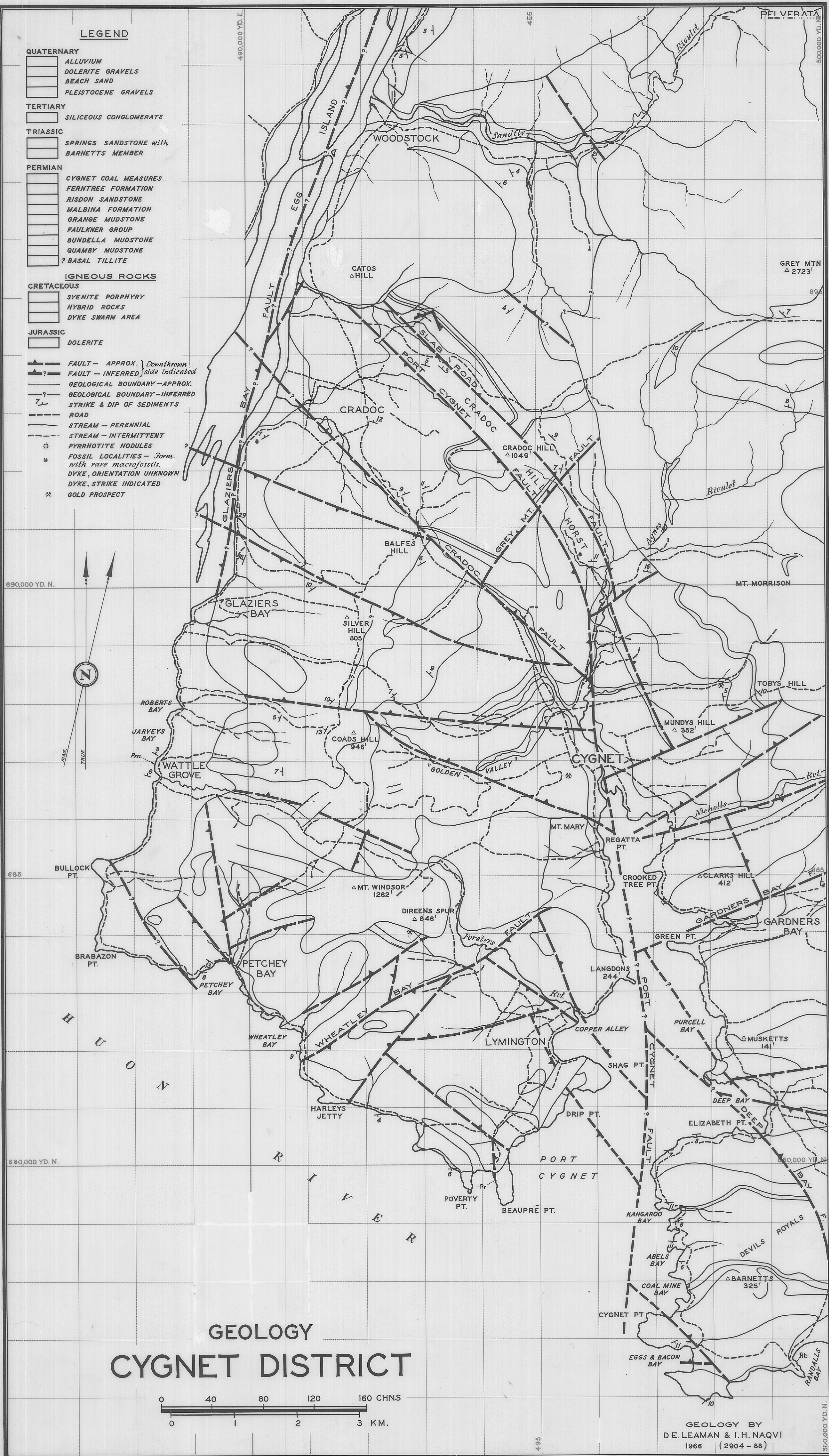
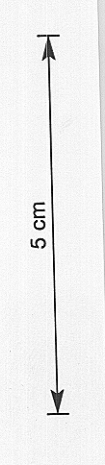
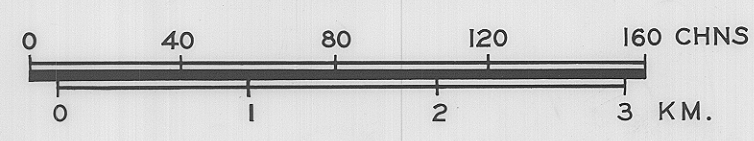


**LEGEND**

- QUATERNARY**  
 ALLUVIUM  
 DOLERITE GRAVELS  
 BEACH SAND  
 PLEISTOCENE GRAVELS
- TERTIARY**  
 SILICEOUS CONGLOMERATE
- TRIASSIC**  
 SPRINGS SANDSTONE with BARNETTS MEMBER
- PERMIAN**  
 CYGNET COAL MEASURES  
 FERNTREE FORMATION  
 RISDON SANDSTONE  
 MALBINA FORMATION  
 GRANGE MUDSTONE  
 FAULKNER GROUP  
 BUNDELLA MUDSTONE  
 QUAMBY MUDSTONE  
 ? BASAL TILLITE
- IGNEOUS ROCKS**
- CRETACEOUS**  
 SYENITE PORPHYRY  
 HYBRID ROCKS  
 DYKE SWARM AREA
- JURASSIC**  
 DOLERITE
- ▲ FAULT - APPROX. \ Downthrown  
 ▲ FAULT - INFERRED \ side indicated  
 --- GEOLOGICAL BOUNDARY - APPROX.  
 --- GEOLOGICAL BOUNDARY - INFERRED  
 7- STRIKE & DIP OF SEDIMENTS  
 --- ROAD  
 --- STREAM - PERENNIAL  
 --- STREAM - INTERMITTENT  
 ⊕ PYRRHOTITE NODULES  
 ● FOSSIL LOCALITIES - Form. with rare macrofossils.  
 DYKE, ORIENTATION UNKNOWN  
 DYKE, STRIKE INDICATED  
 ✱ GOLD PROSPECT



**GEOLOGY  
 CYGNET DISTRICT**



GEOLOGY BY  
 D.E. LEAMAN & I.H. NAQVI  
 1966 (2904 - 88)

2904

741

690,000 YD. N.

665

680,000 YD. N.

GREY MTN  
 Δ 2723'

MT. MORRISON

MUNDYS HILL  
 Δ 352'

CLARKS HILL  
 Δ 412'

MUSKETTS  
 Δ 141'

680,000 YD. N.

BARNETTS  
 Δ 325'

500,000 YD. N.