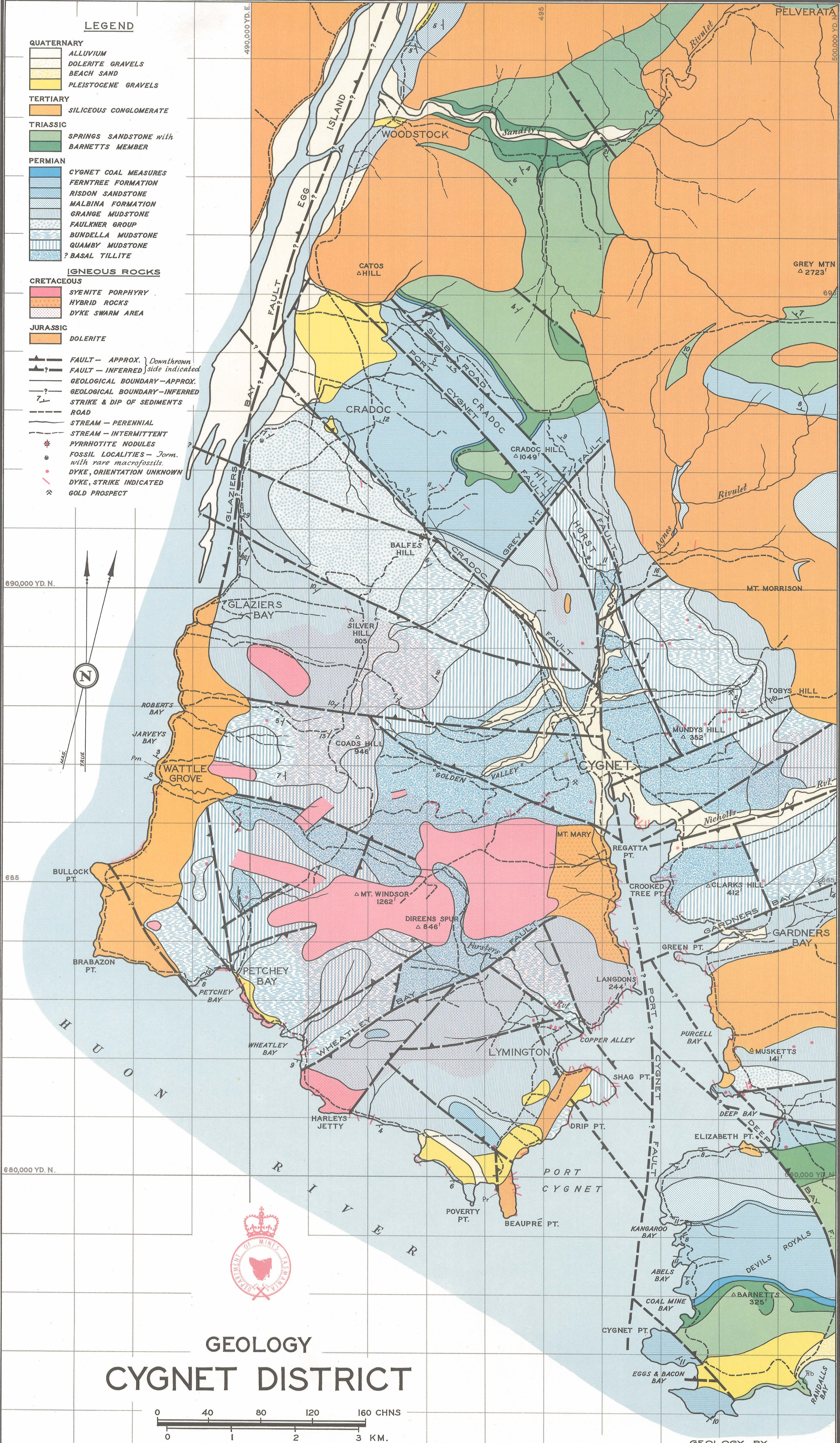


LEGEND

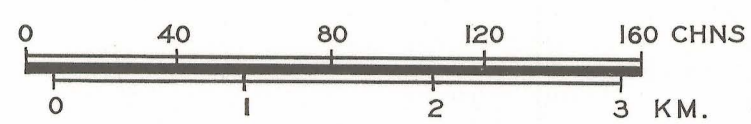
- QUATERNARY**
- ALLUVIUM
 - DOLERITE GRAVELS
 - BEACH SAND
 - PLEISTOCENE GRAVELS
- TERTIARY**
- SILICEOUS CONGLOMERATE
- TRIASSIC**
- SPRINGS SANDSTONE with BARNETTS MEMBER
- PERMIAN**
- CYGNET COAL MEASURES
 - FERNTREE FORMATION
 - RISDON SANDSTONE
 - MALBINA FORMATION
 - GRANGE MUDSTONE
 - FAULKNER GROUP
 - BUNDELLA MUDSTONE
 - QUAMBY MUDSTONE
 - ? BASAL TILLITE

- IGNEOUS ROCKS**
- CRETACEOUS**
- SYENITE PORPHYRY
 - HYBRID ROCKS
 - DYKE SWARM AREA
- JURASSIC**
- DOLERITE

- FAULT - APPROX. } Downthrown side indicated
- FAULT - INFERRED } side indicated
- GEOLOGICAL BOUNDARY - APPROX.
- GEOLOGICAL BOUNDARY - INFERRED
- STRIKE & DIP OF SEDIMENTS
- ROAD
- STREAM - PERENNIAL
- STREAM - INTERMITTENT
- PYRRHOTITE NODULES
- FOSSIL LOCALITIES - Form. with rare macrofossils.
- DYKE, ORIENTATION UNKNOWN
- DYKE, STRIKE INDICATED
- GOLD PROSPECT



GEOLOGY CYGNET DISTRICT



GEOLOGY BY
D.E. LEAMAN & I.H. NAQVI
1966 (2904-88)