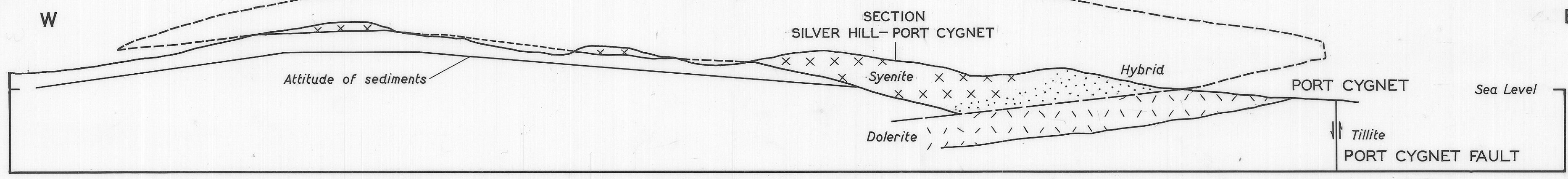
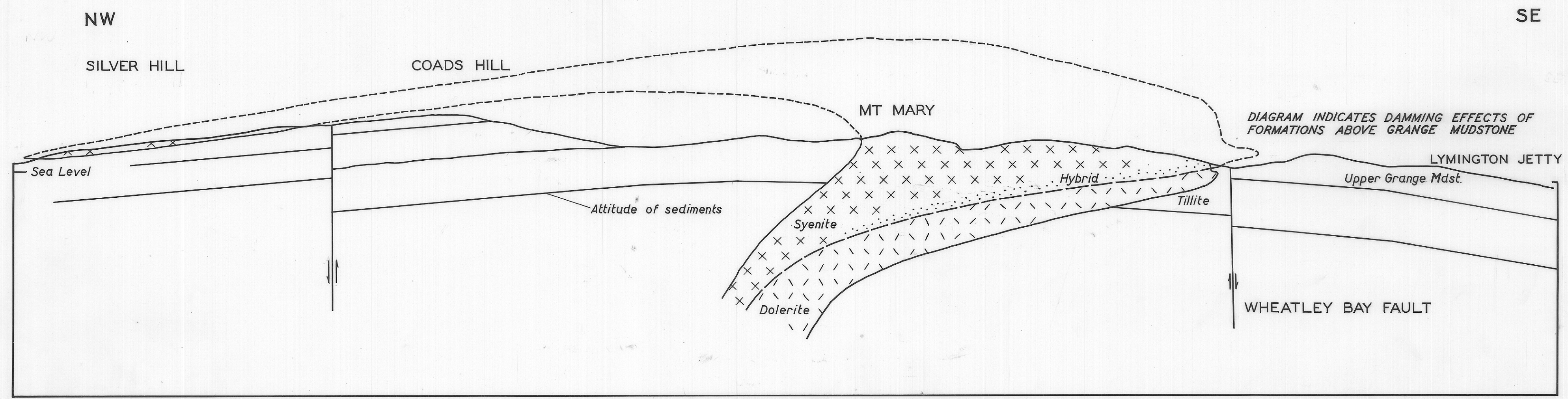


5 cm

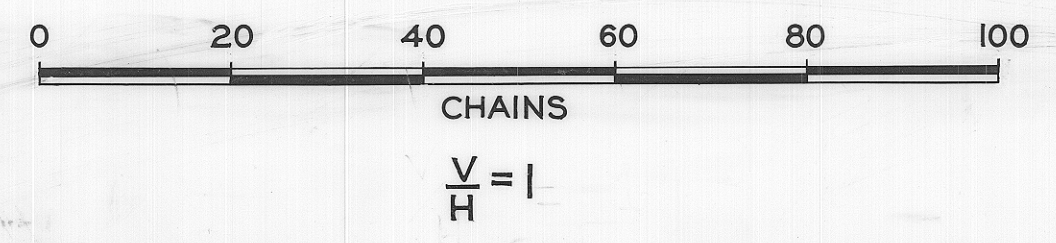


SECTION ALONG 685N



SECTION FROM 689N 490E TO 683N 496E

DIAGRAMS SHOWING LACCOLITHIC EMPLACEMENT OF ALKALINE IGNEOUS BODIES



DEPARTMENT OF MINES
2924-88

D. LEAMAN
GEOLOGIST
15 AUG. 1966

2924

161

see p. 4