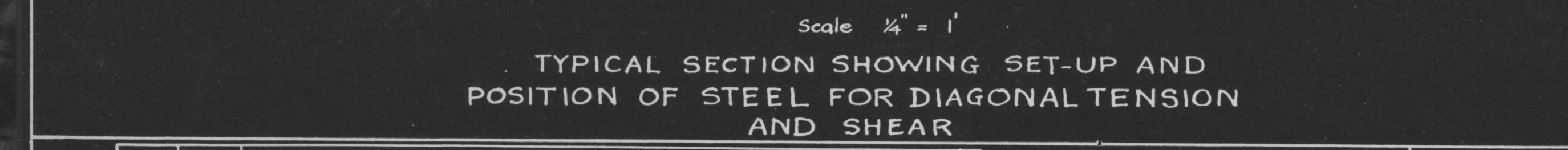
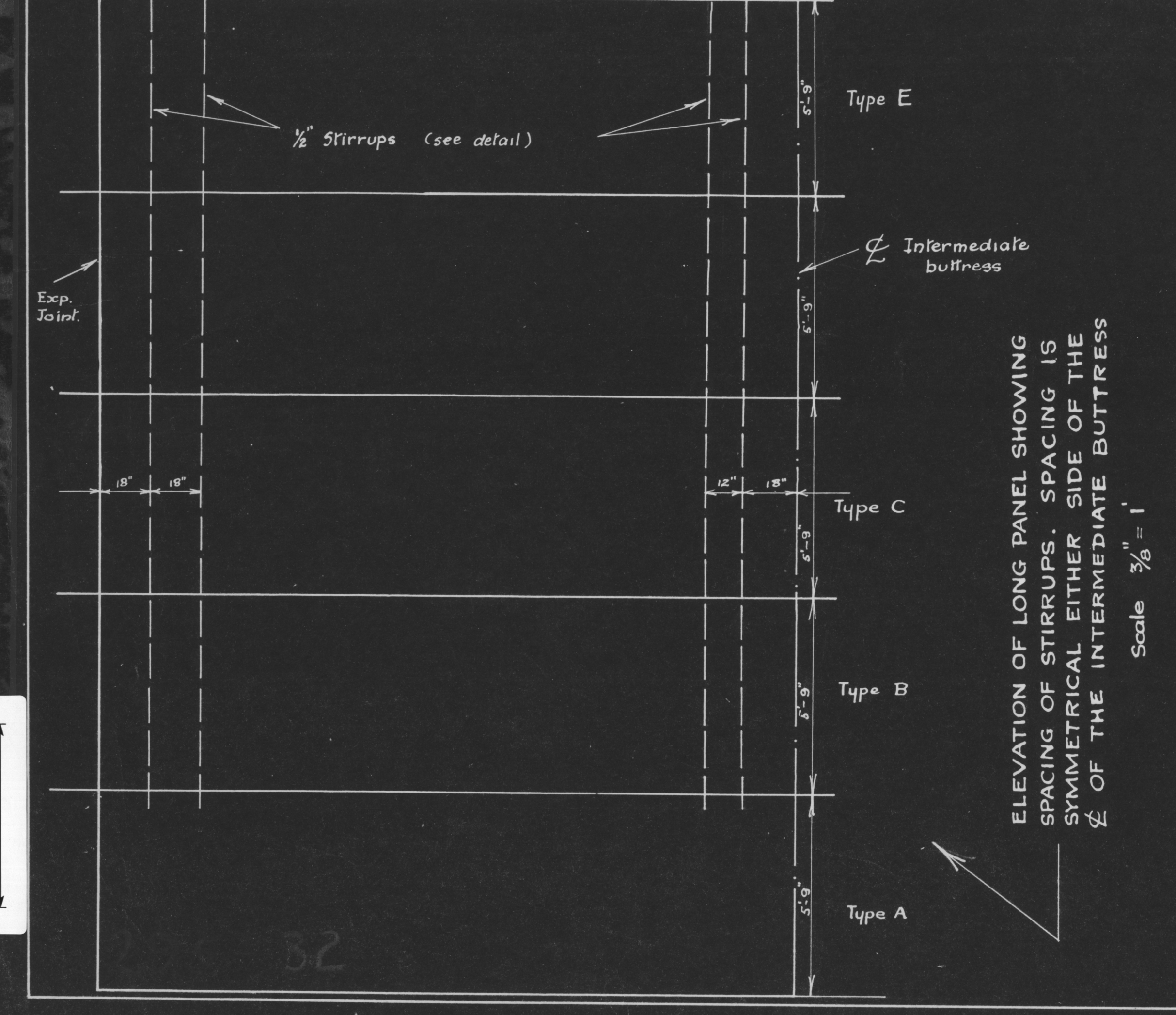


PLAN OF WESTERN END SPILLWAY SECTION  
Scale 1/2" = 1'

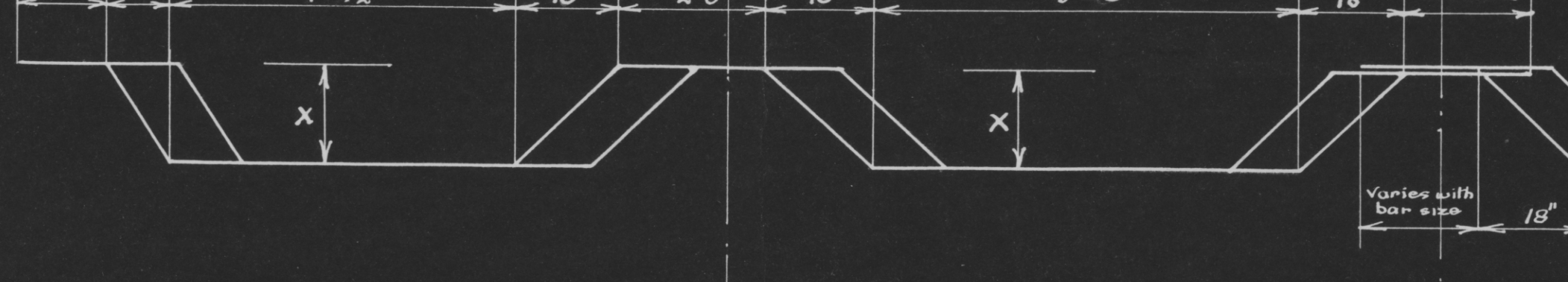


TYPICAL SECTION SHOWING SET-UP AND POSITION OF STEEL FOR DIAGONAL TENSION AND SHEAR  
Scale 1/4" = 1'

ELEVATION OF LONG PANEL SHOWING SPACING OF STIRRUPS. SPACING IS SYMMETRICAL EITHER SIDE OF THE INTERMEDIATE BUTTRESS  
Scale 3/8" = 1'



DIMENSIONS FOR TYPE 1

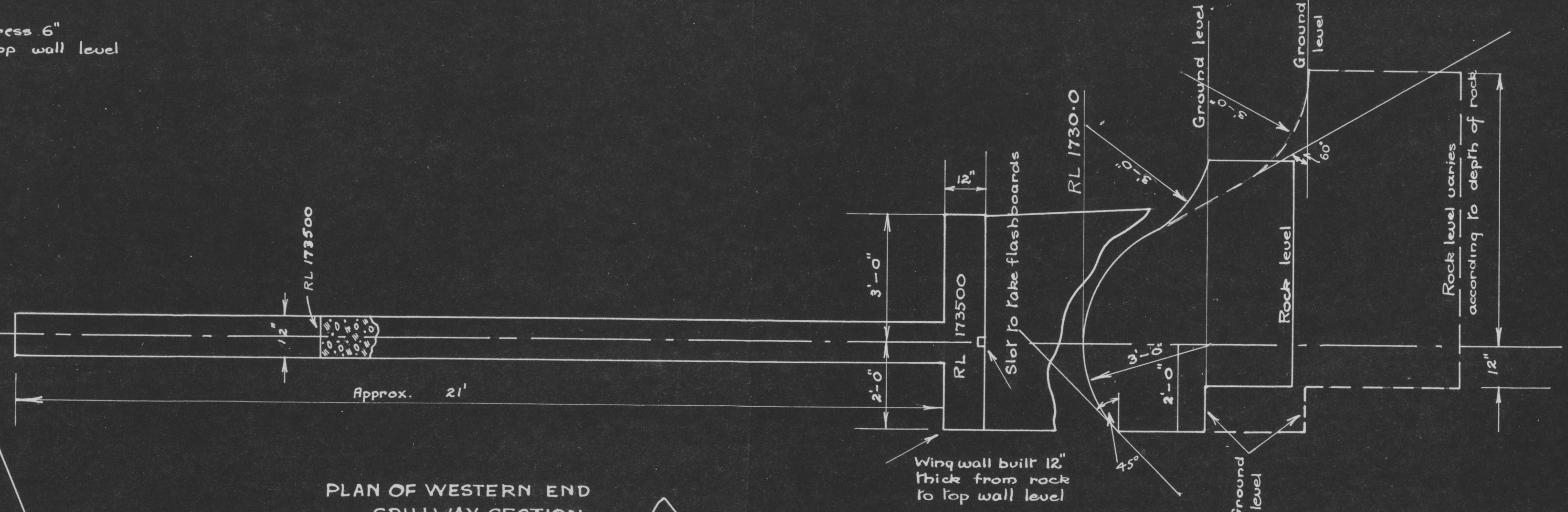
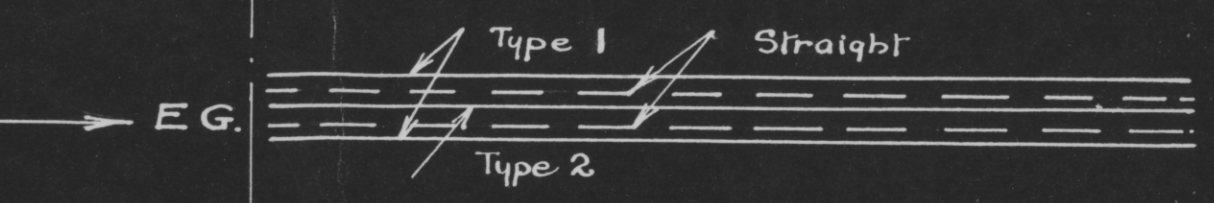


GROUP	A	B	C	D	E	F
DIMENSION X	7 1/2"	9 3/4"	12"	14 1/4"	17"	18"

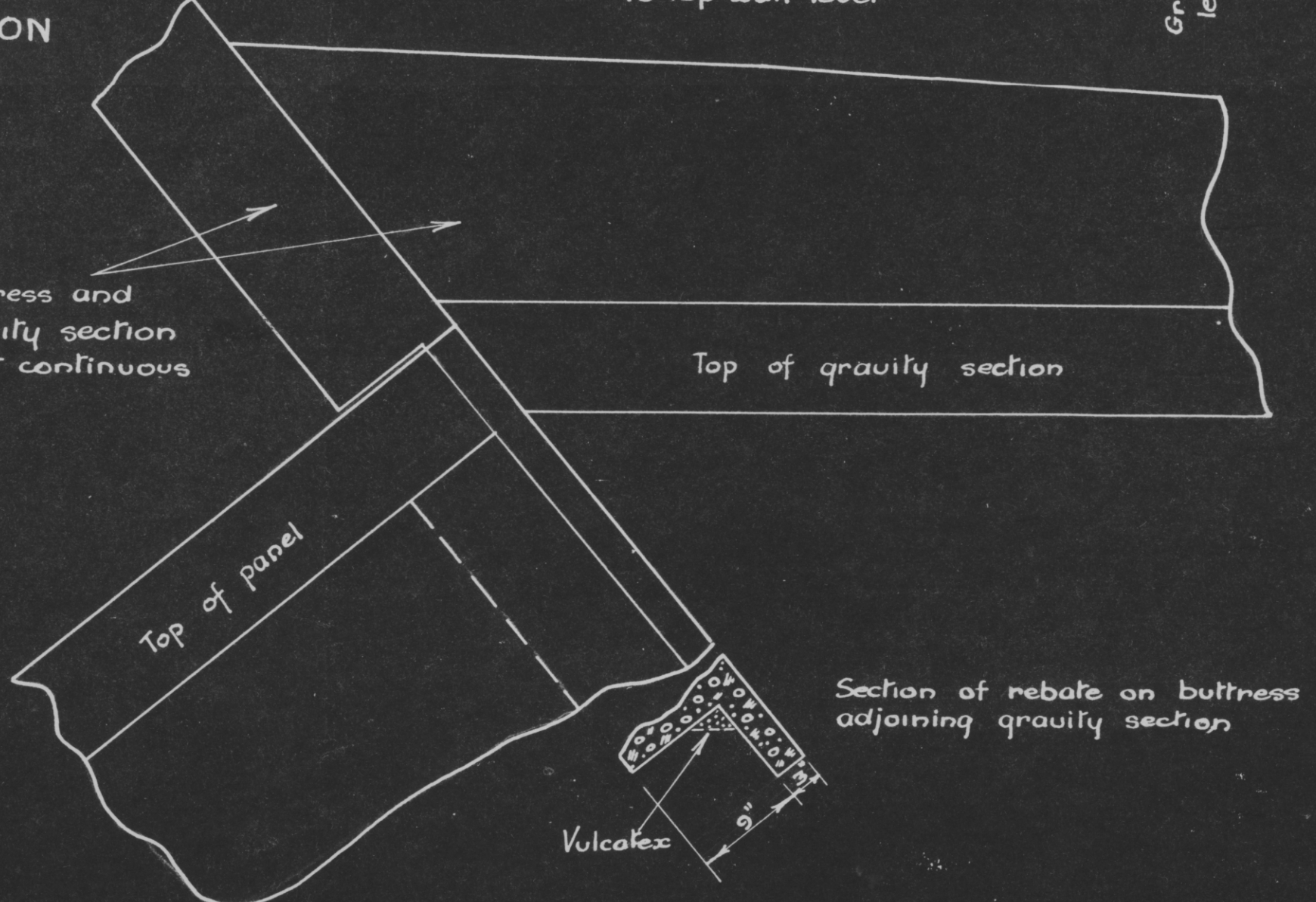
DIMENSIONS FOR TYPE 2



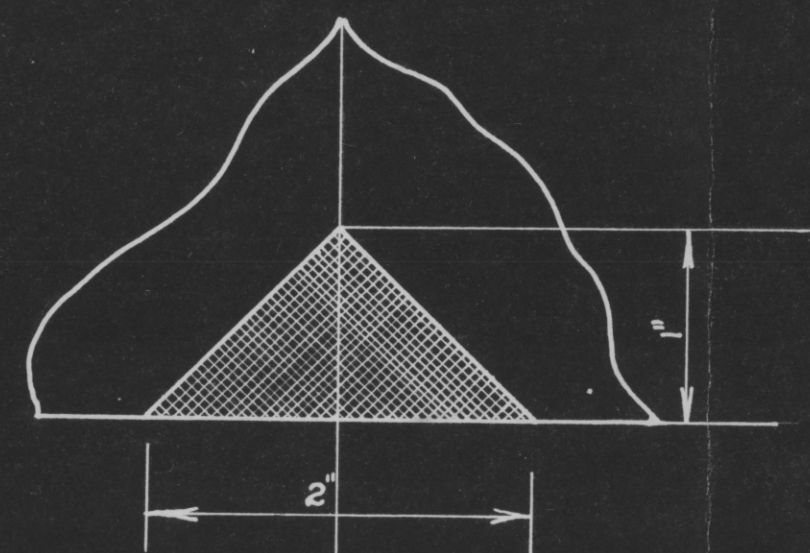
10' SPANS  
DETAIL OF BENDING OF TYPES 1 & 2  
EVERY SECOND BAR TO BE ALTERNATIVELY TYPE 1 & 2. OTHER BARS ARE STRAIGHT. SEE SHEETS 2 & 3 FOR DETAIL OF SPACING AND TO DETERMINE NUMBER REQUIRED  
Scale 1/2" = 1'



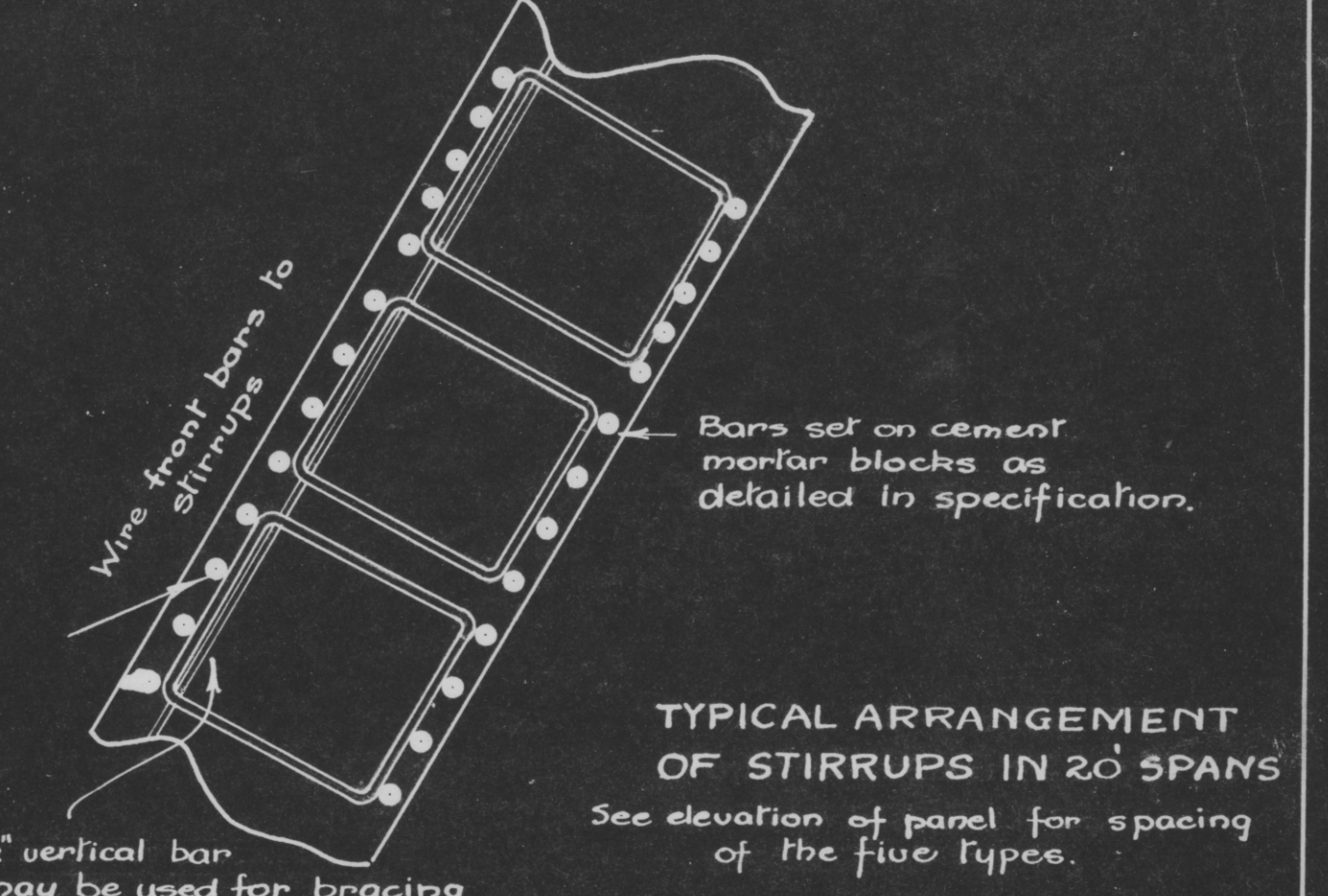
PLAN OF WESTERN END SPILLWAY SECTION  
Scale 1/2" = 1'



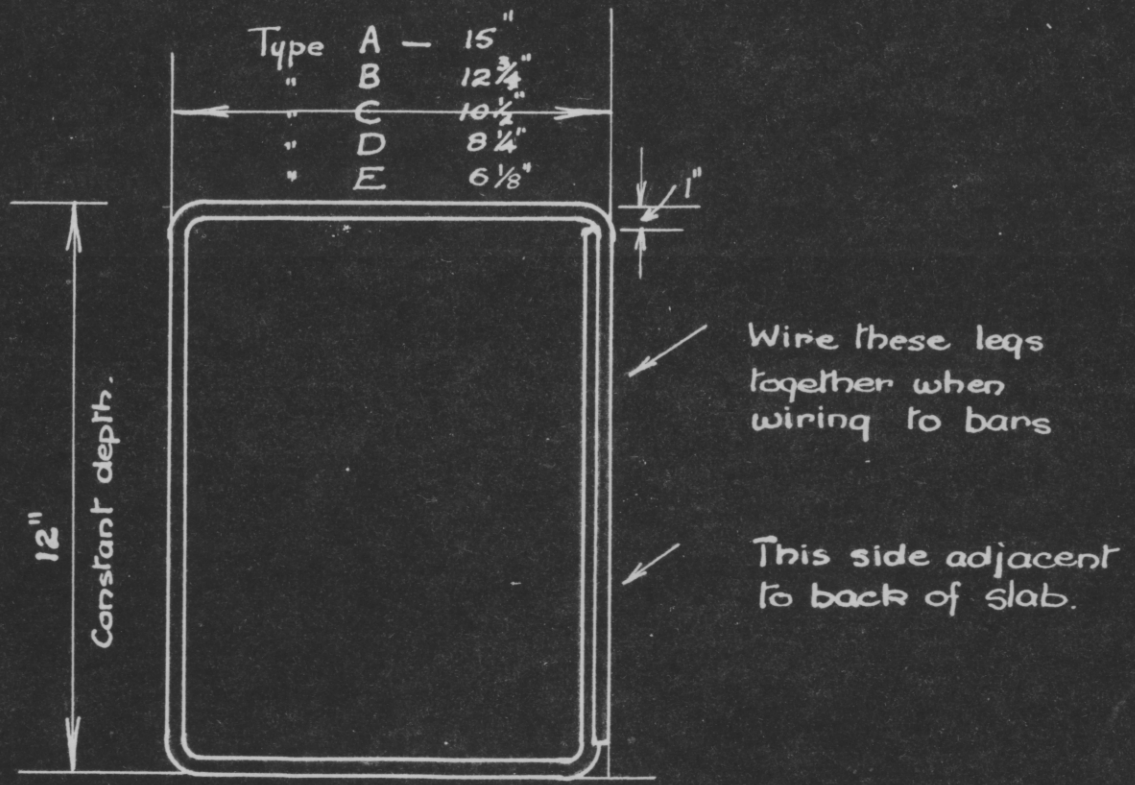
DETAIL OF ARRANGEMENT OF GRAVITY SECTION AND FIRST PANEL  
Scale 1" = 1'



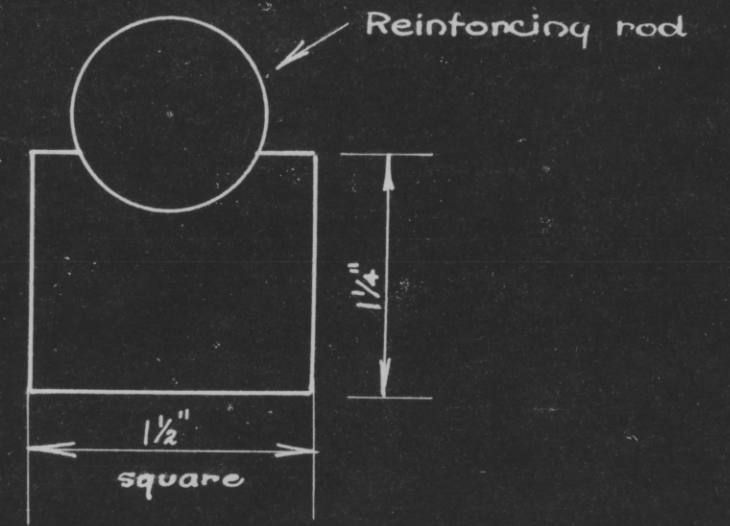
MODIFIED SECTION OF VULCATEX AT EXPANSION JOINTS



1/2" vertical bar may be used for bracing up to carry front steel



DETAIL OF 1/2" STIRRUP FOR LONG SPANS  
See sheets 1-4 for number required



DETAIL OF CEMENT BLOCK TO SPACE REINFORCING STEEL

MT. PARIS TIN MINES LTD.  
MORNING STAR DAM.  
DETAILS OF REINFORCEMENT AND AMENDMENTS TO LAYOUT  
HASKINS AND DAVEY CONSULTING ENGINEERS.  
ASBESTOS HOUSE 67 YORK ST. SYDNEY

PRINT NO.	APPROVED	Date
		18-11-35
		22-11-35

3-4-5