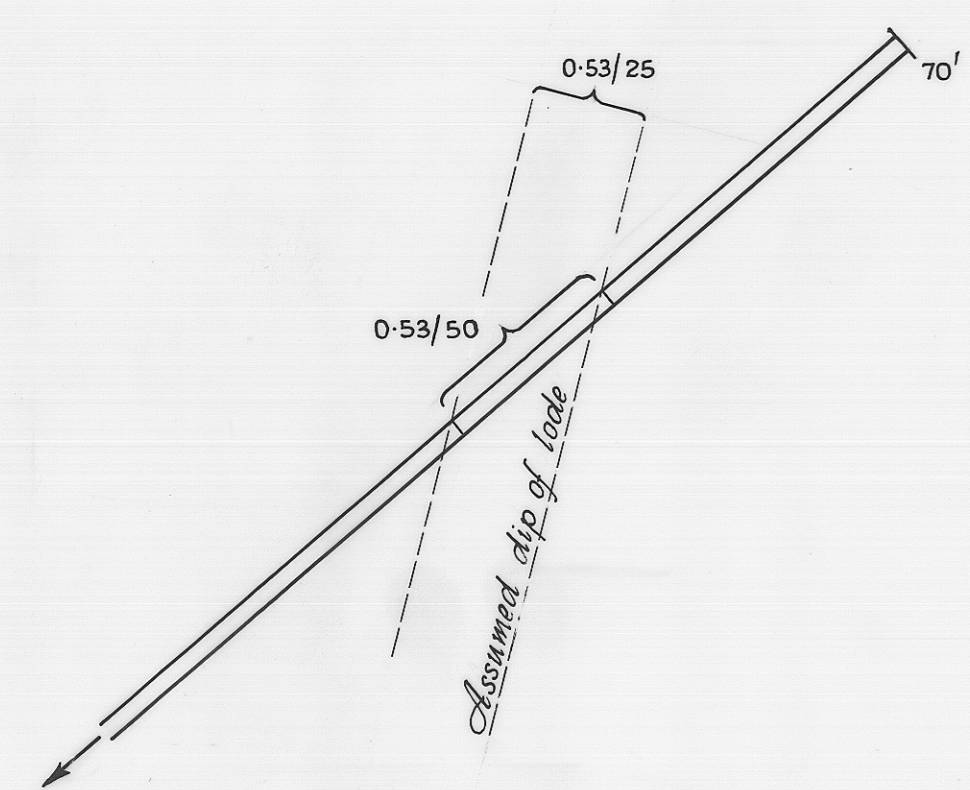
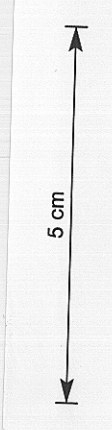
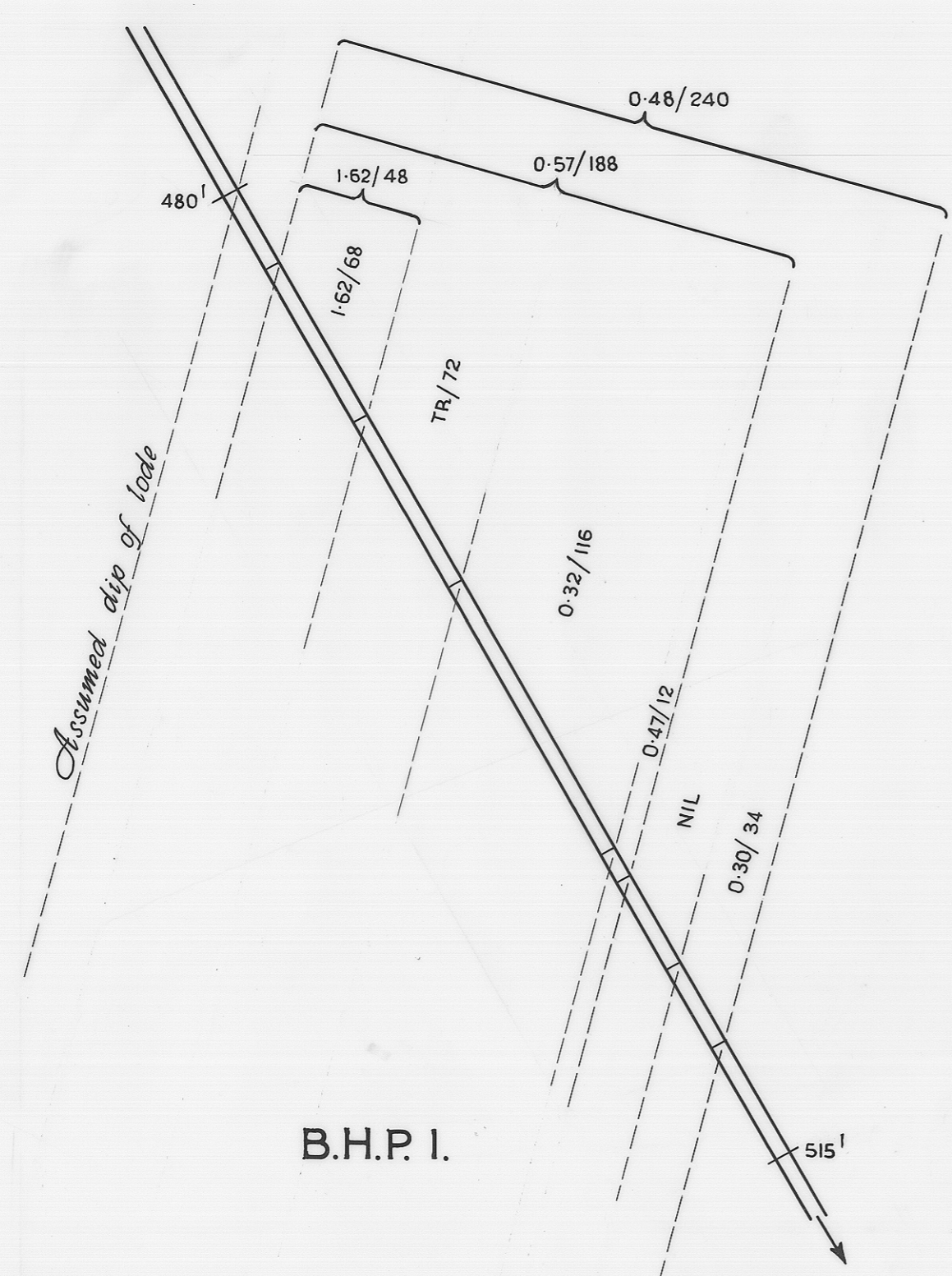


2958

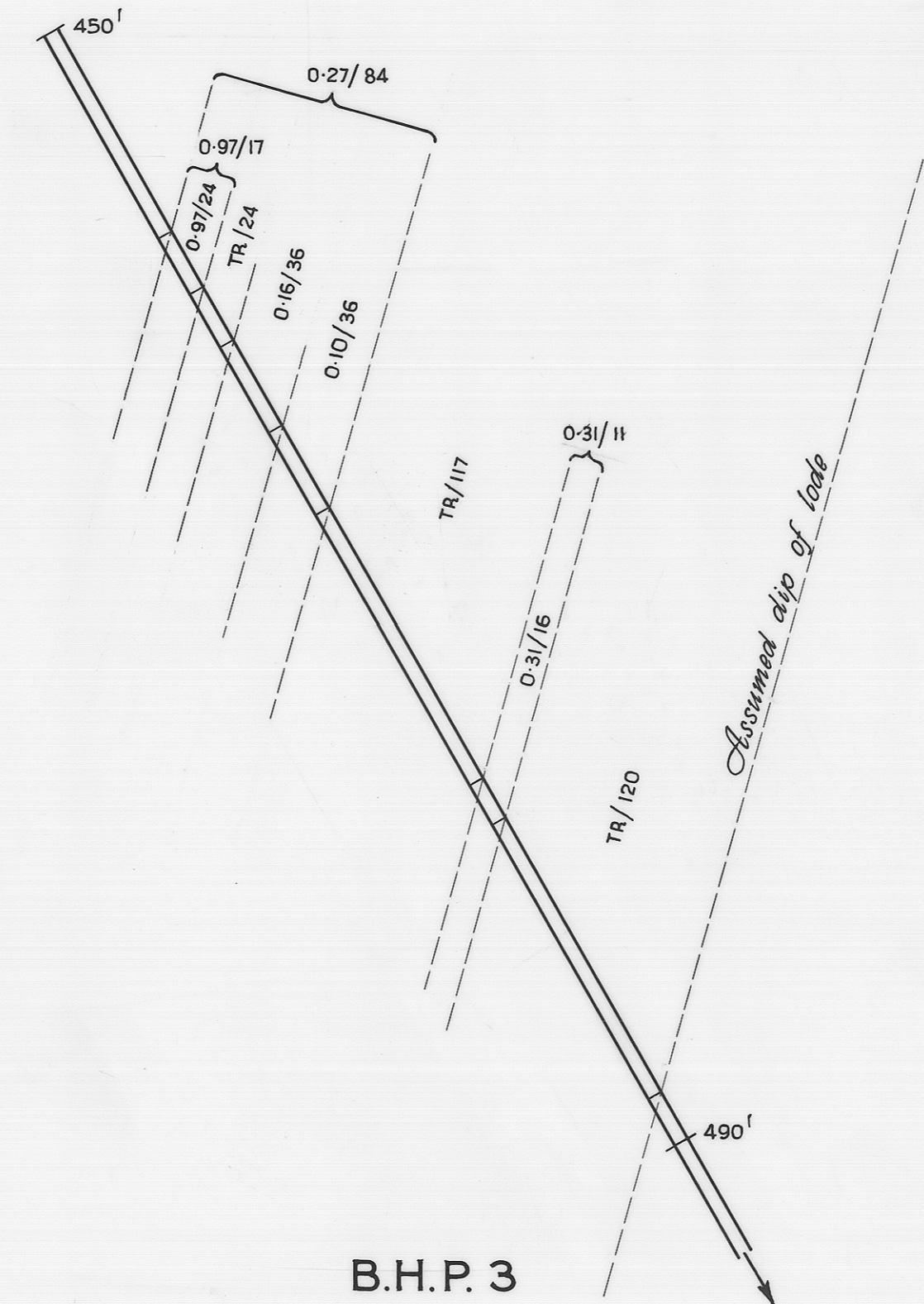
146



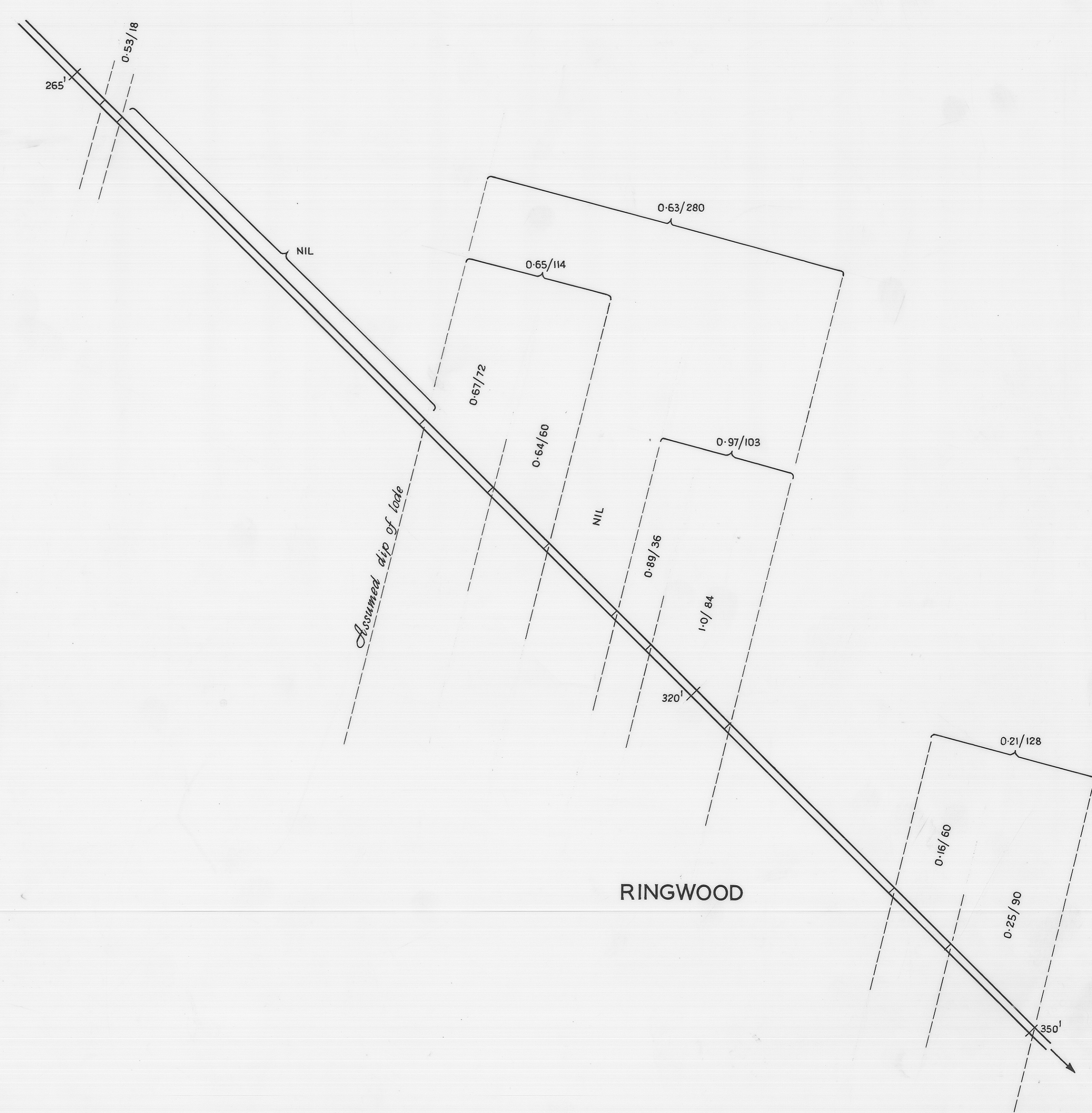
C.C.C. 3



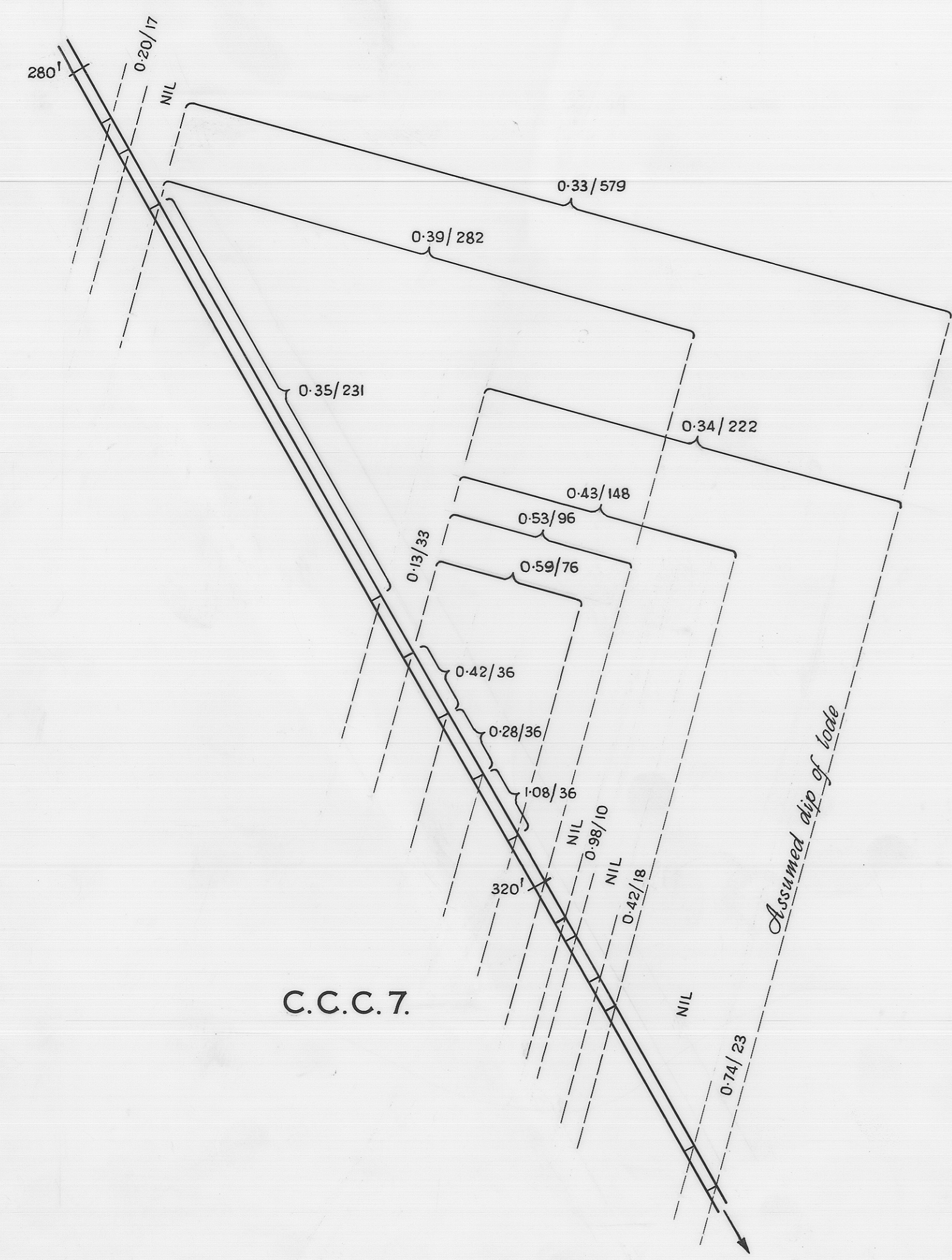
B.H.P. 1.



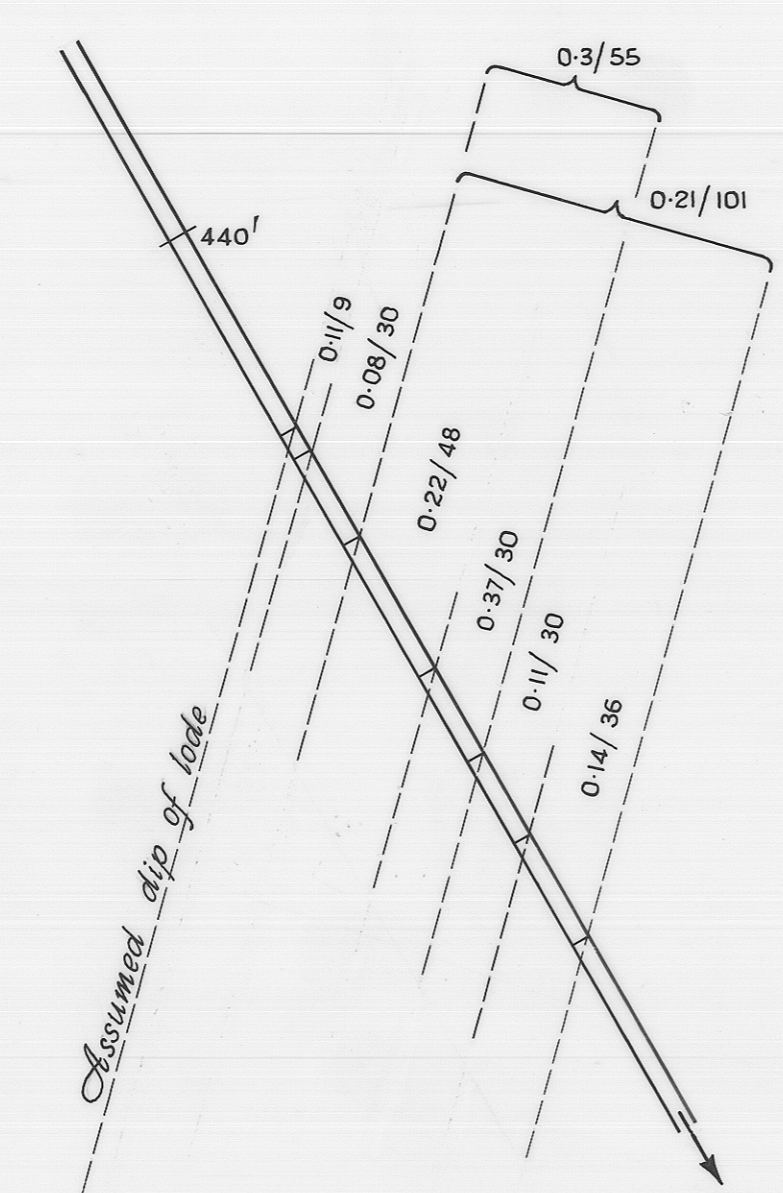
B.H.P. 3



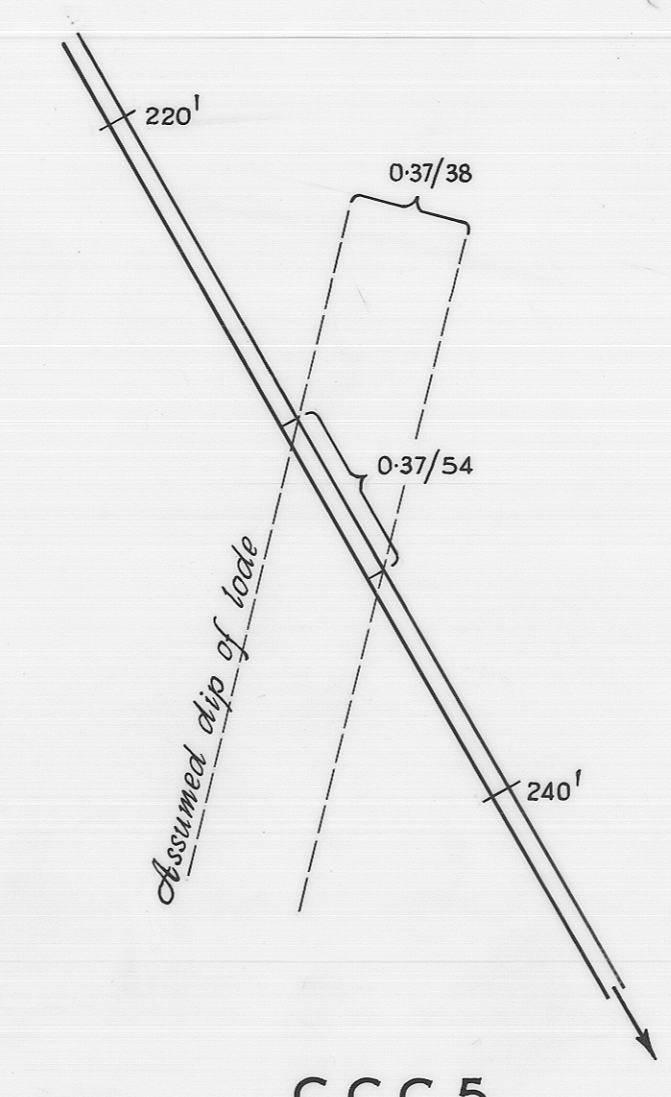
RINGWOOD



C.C.C. 7.



B.H.P. 2.



C.C.C. 5.

VIEW N.W.

DEPARTMENT OF MINES — TASMANIA	
ROYAL GEORGE TIN MINE OPTIMUM TIN ASSAYS (%) AND TRUE LODE WIDTHS (INCHES)	
DATE <i>January 1967</i>	SCALE IN FEET 0 5 10 15
GEOLOGIST <i>C. Urquhart</i>	MAP SHEET & N° <i>Snow Hill 55</i>
DRAUGHTSMAN <i>P. Nankivell</i>	FILE N° 2958
REVISIONS	

Refer to 4"