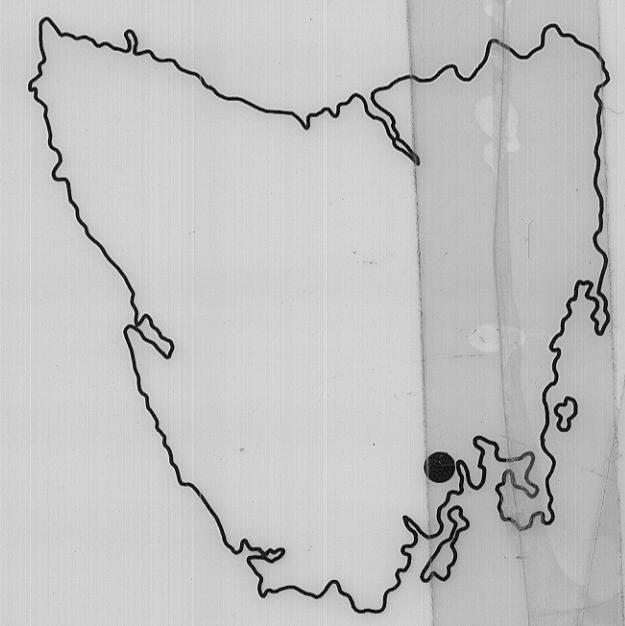
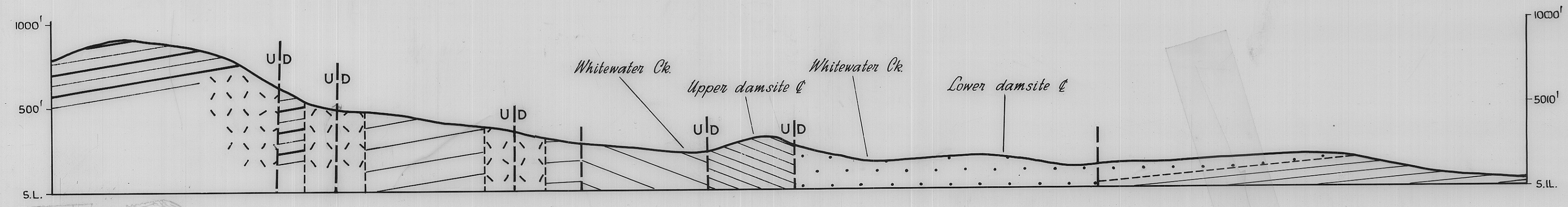


LEGEND

- QUATERNARY Alluvial and river terrace deposits.
- TERTIARY Basalt
- JURASSIC Dolerite.
- TRIASSIC Thick sandstones with mudstones.
- PERMIAN Fern tree formation. Unfossiliferous well jointed siltstones with erratics.
- Malbina formation. Bedded sandy siltstones and silty sandstones with erratics & fossiliferous bands. Fenestella.
- Grange formation. Bedded highly fossiliferous siltstones & mudstones, no erratics. Fenestella, Spirifers, Stropholosa, etc.
- Approx. geological boundary.
- - - Inferred geological boundary.
- - - Fault approx. position.
- - - Possible fault.
- + + + Discordant contact.
- ↖ Strike and dip
- ↕ Joint.
- ↕ Vertical joint.
- ← Current direction.
- o Fossil locality
- Flooded area
- Q Quarry.



LOCALITY MAP



SECTION A-A'

V_H = 2

FIG. 2

DEPARTMENT OF MINES - TASMANIA	
GEOLOGY - WHITEWATER CK.	
Date:- March 1967	SCALE OF FEET
Geologist:- W. Moore	0 1000 2000
Draughtsman:- P. Rankivell	Map sheet & No. Hobart 82
Revisions	File No. 2974

Handwritten notes and signatures at the bottom right corner.