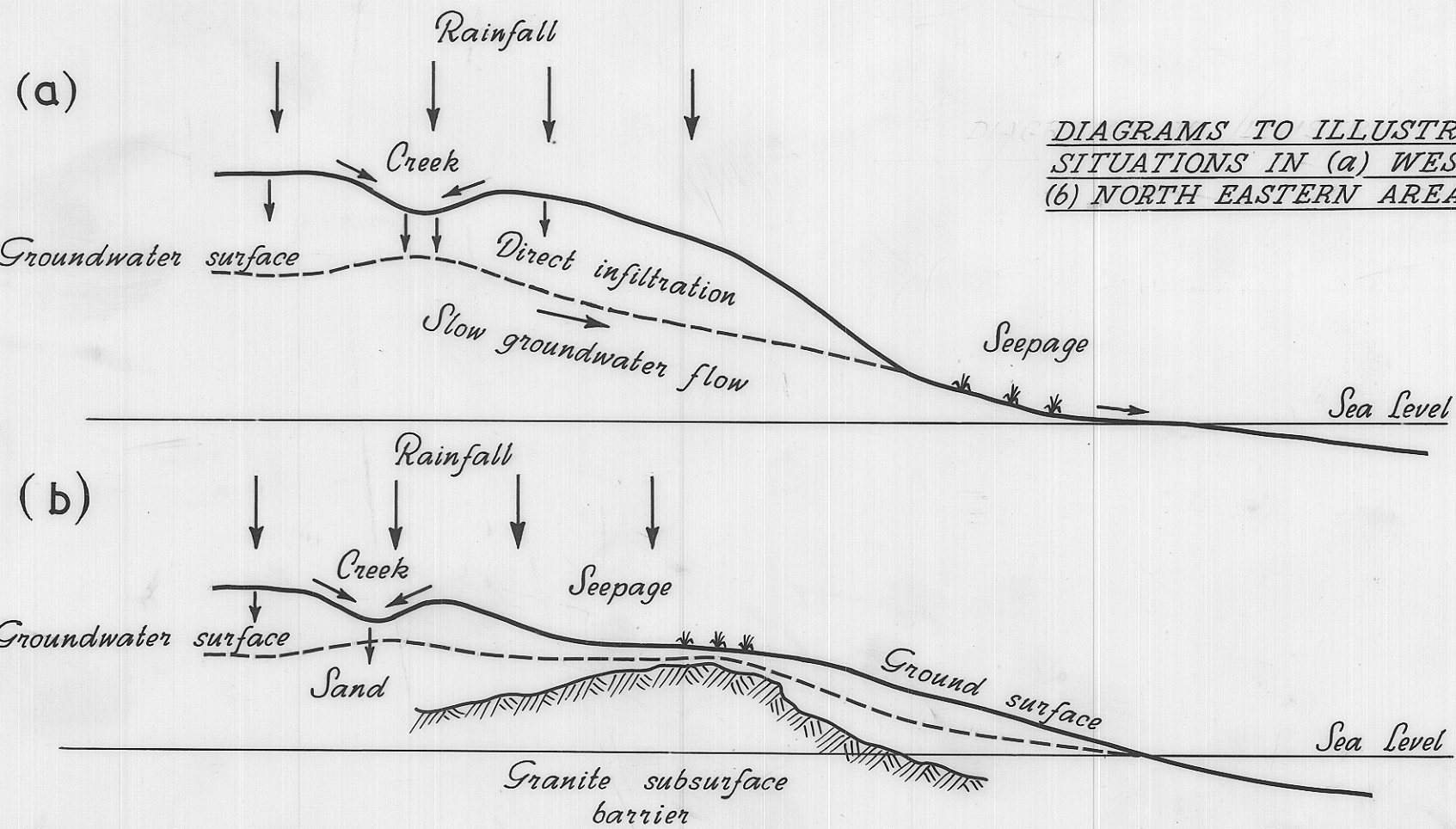
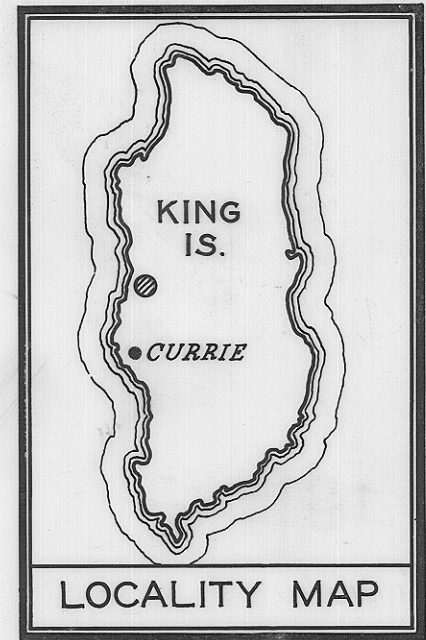


**LEGEND**

- Granite
- Seepage
- Resistivity probe
- Spot height
- Probable direction of flow of underground water based on spot heights.



DIAGRAMS TO ILLUSTRATE GROUNDWATER SITUATIONS IN (a) WESTERN AREA AND (b) NORTH EASTERN AREA.



DEPARTMENT OF MINES - TASMANIA	
GROUNDWATER SURVEY BUTTER FACTORY - KING IS.	
Date:- April 1967	Scale of chns. 0 5 10 15
Geologist:- L. Matthews	Map sheet & N° Currie 5
Draughtsman:- P. Nankivell	File N° 2980
Revisions:-	

Reduce to 4" 36