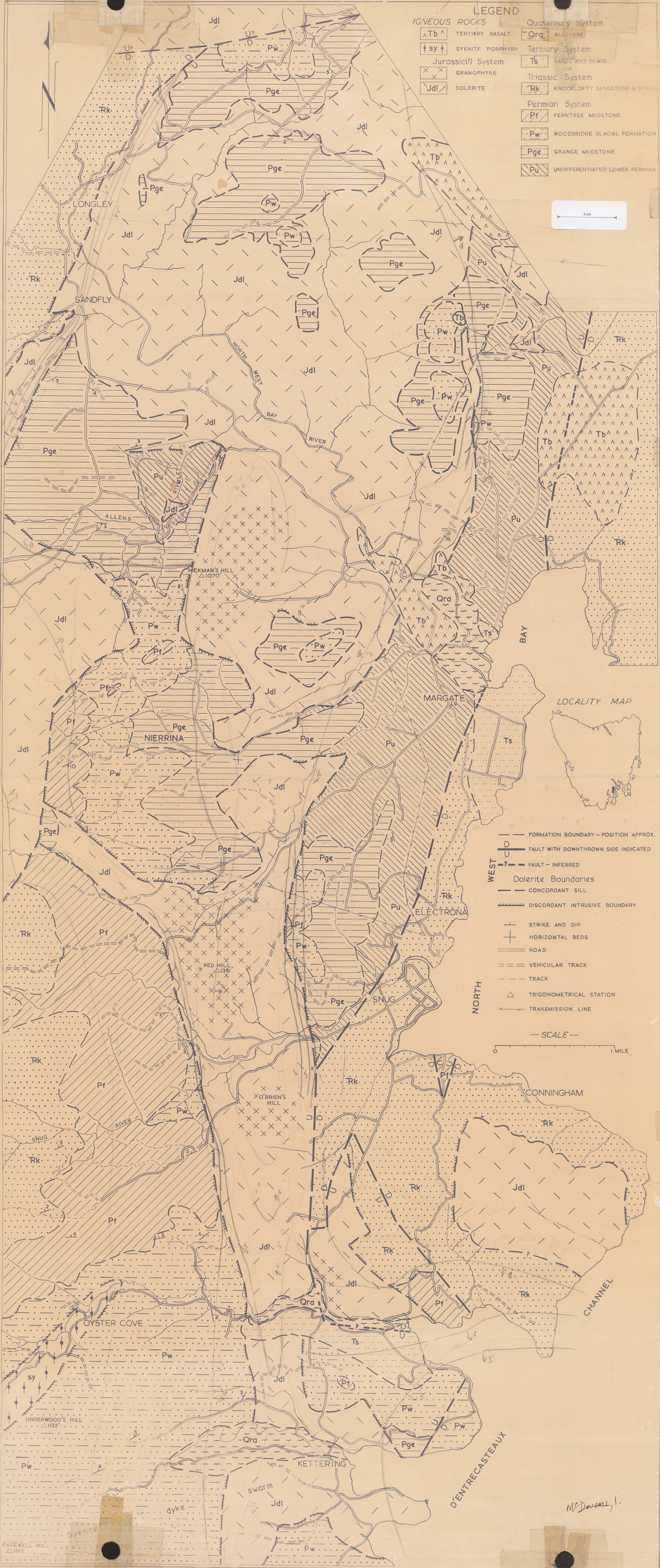
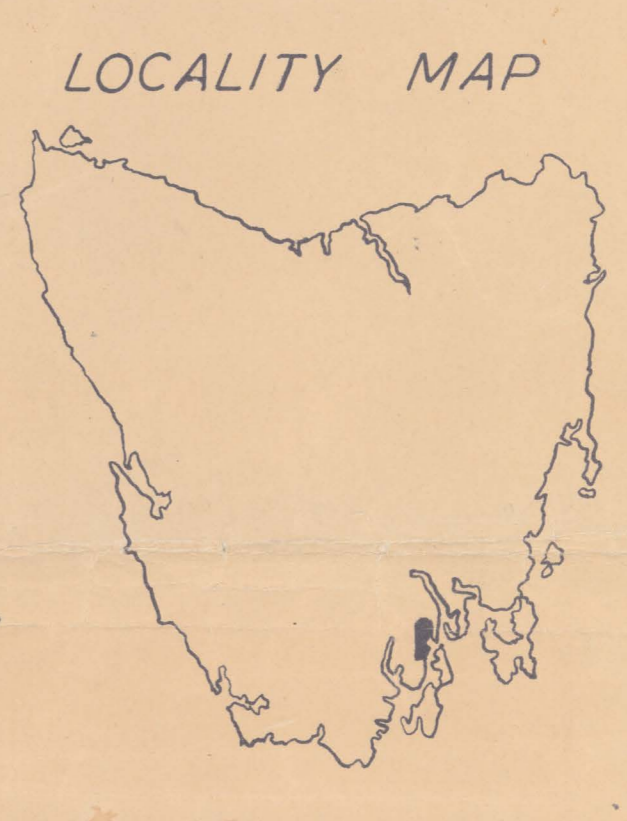
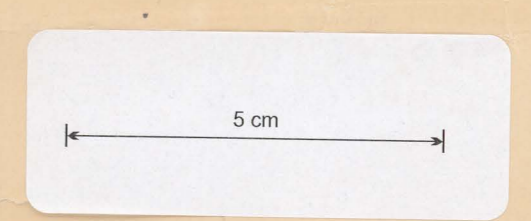


GEOLOGIC MAP OF THE RED HILL DYKE, TASMANIA

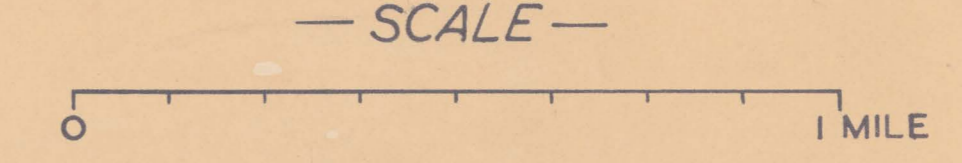


LEGEND

IGNEOUS ROCKS		Quaternary System	
$\Delta$ Tb $\Delta$	TERTIARY BASALT	Qra	ALLUVIUM
$\uparrow$ sy $\uparrow$	SYENITE PORPHYRY	Tertiary System	
Jurassic(?) System		Ts	SANDS AND CLAYS
$\times$ $\times$ $\times$	GRANOPHYRE	Triassic System	
Jdl	DOLERITE	Rk	KNOCKLOFTY SANDSTONE & SHALE
		Permian System	
		Pf	FERN TREE MUDSTONE
		Pw	WOODBRIDGE GLACIAL FORMATION
		Pge	GRANGE MUDSTONE
		Pu	UNDIFFERENTIATED LOWER PERMIAN



---	FORMATION BOUNDARY - POSITION APPROX.
$\overline{CD}$	FAULT WITH DOWNTHROWN SIDE INDICATED
---	FAULT - INFERRED
Dolerite Boundaries	
---	CONCORDANT SILL
---	DISCORDANT INTRUSIVE BOUNDARY
+	STRIKE AND DIP
+	HORIZONTAL BEDS
---	ROAD
---	VEHICULAR TRACK
---	TRACK
$\Delta$	TRIGONOMETRICAL STATION
---	TRANSMISSION LINE



FAREWELL HILL  $\Delta$ 1613

McDougal, J.