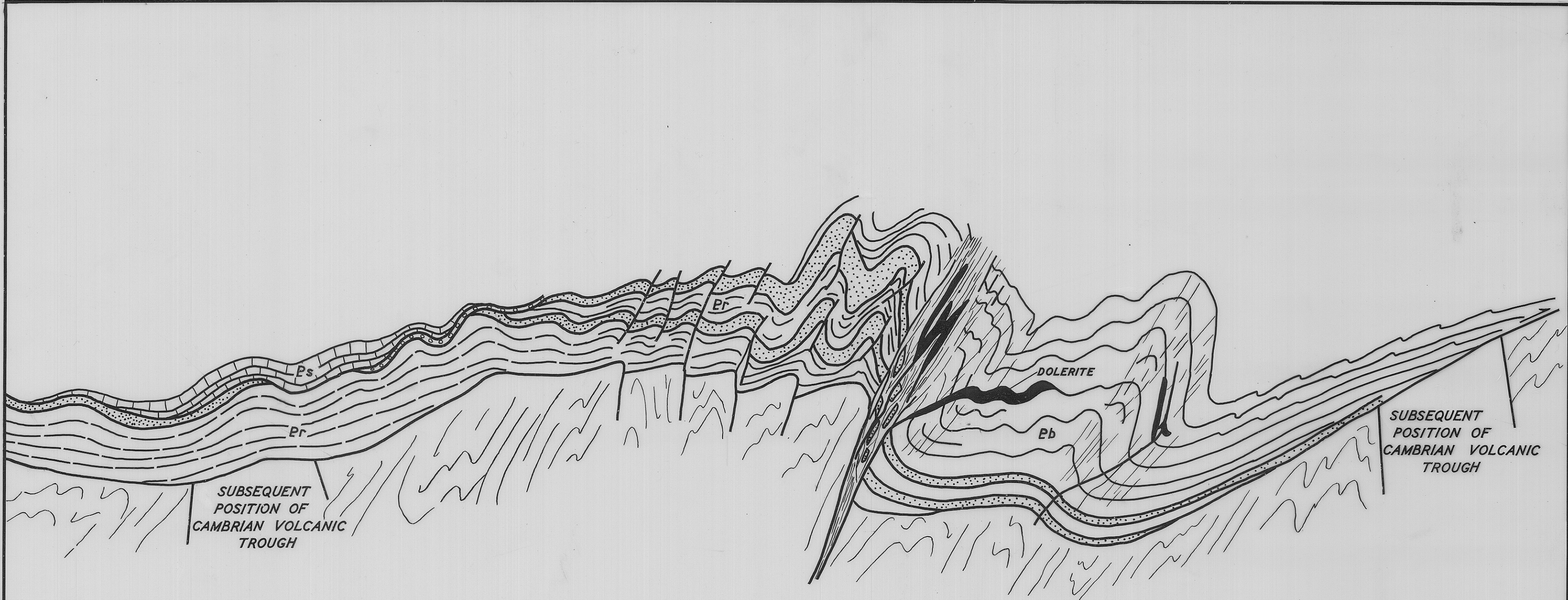


9 x 5 3/4



5 cm

3000

1

- Pr ROCKY CAPE GROUP
- Pb BURNIE FORMATION
- Ps SMITHTON DOLOMITE

PALAEOPROFILE OF ROCKY CAPE GEANTICLINE
AT END OF PENGUIN OROGENY

0 4 8 MLS.
APPROX.

3000

v.