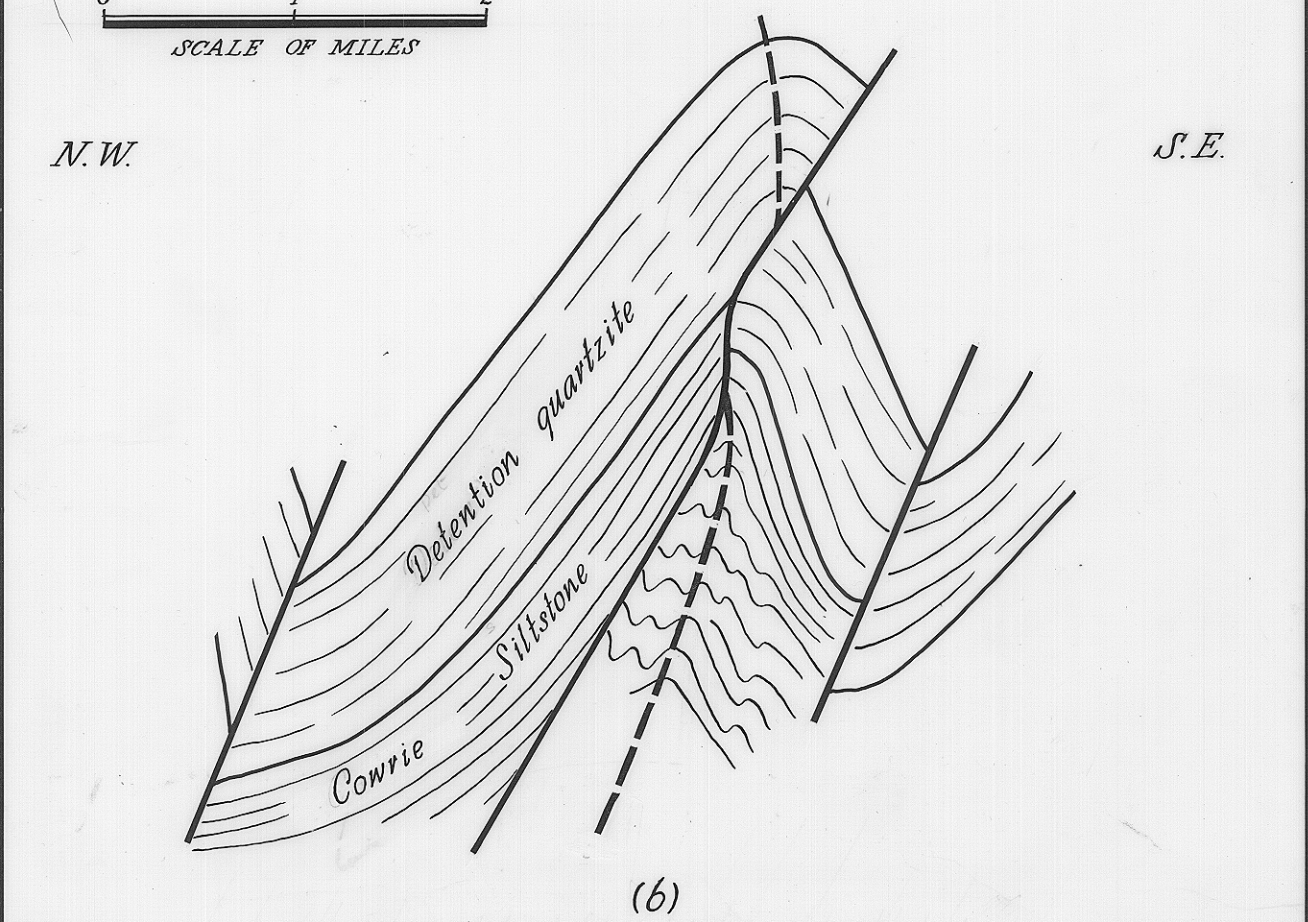
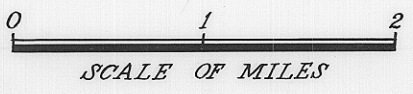


(a)
 PROFILE SHOWING REGIONAL STYLE OF
 BREAK-THRUSTS, BETWEEN ROCKY CAPE &
 SISTERS BEACH. (LOOKING DOWN FOLD AXES TO N.E.)



(b)
 PROFILE OF SISTERS HILLS ANTICLINE
 (LOOKING DOWN FOLD AXIS TO N.E.)

9x5 1/2

123

3022