

5 cm

GEOLOGICAL LOG FROM SLUDGE & CORE

SELF POTENTIAL

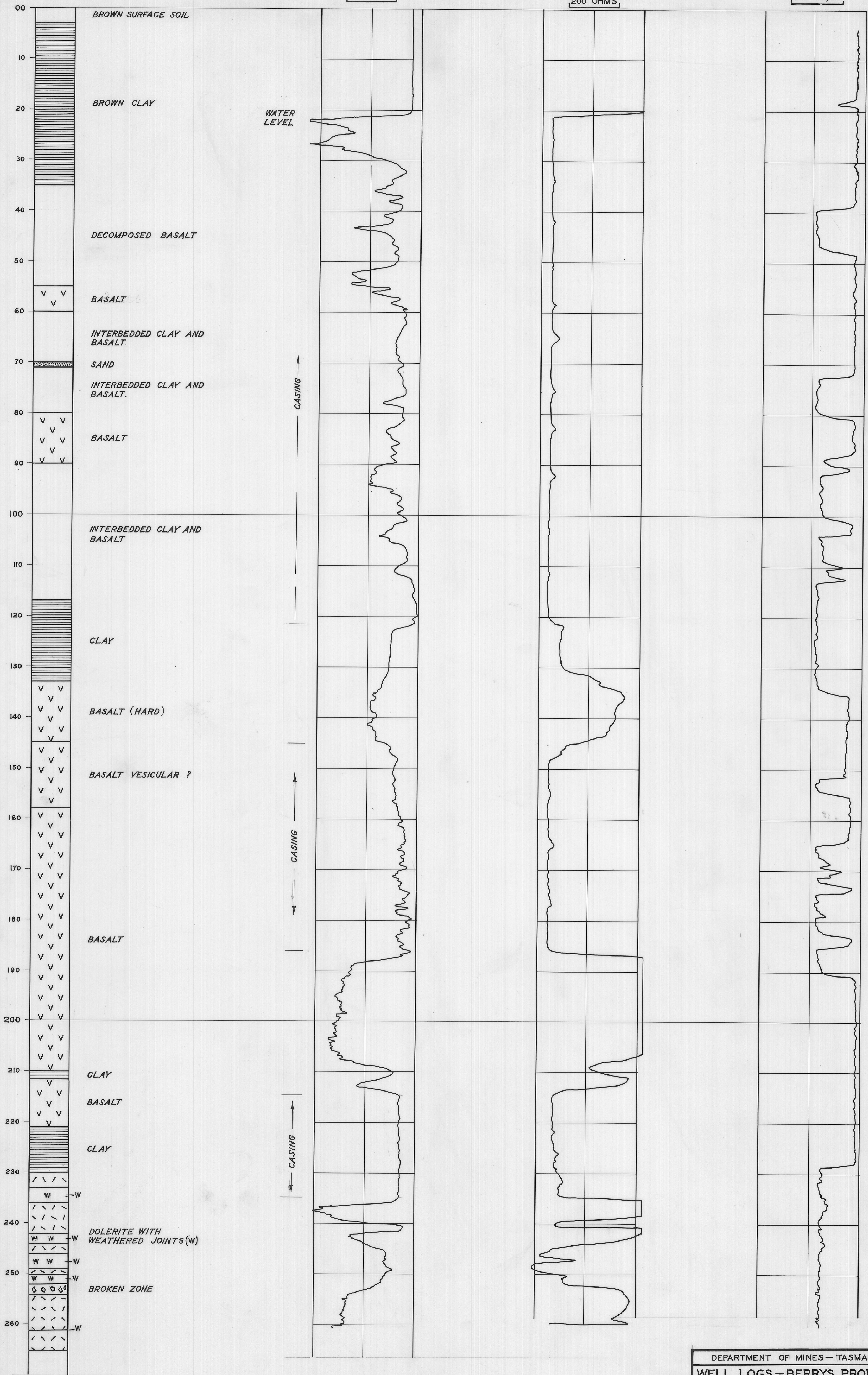
100 M.V.

RESISTIVITY SINGLE POINT

200 OHMS

GAMMA RAY

0.10 MR/HR



DEPARTMENT OF MINES - TASMANIA	
WELL LOGS - BERRYS PROPERTY DELORAINE	
Date:- January 1967	Scales:- As shown
Geologist:- M. Longman	Draughtsman:- P. Hanvell
Revisions:-	Map Sheet & A°:- Quamby 46
	File No 3046

Reduce to 4"