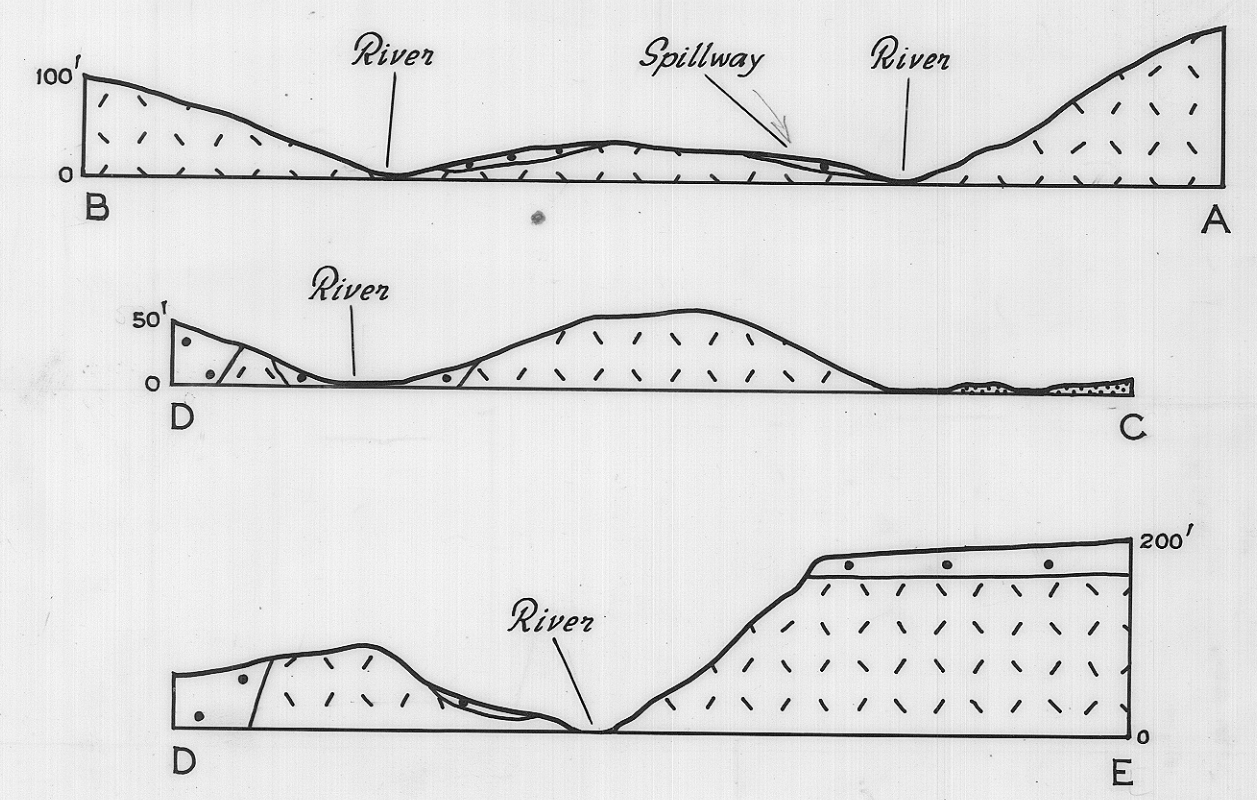
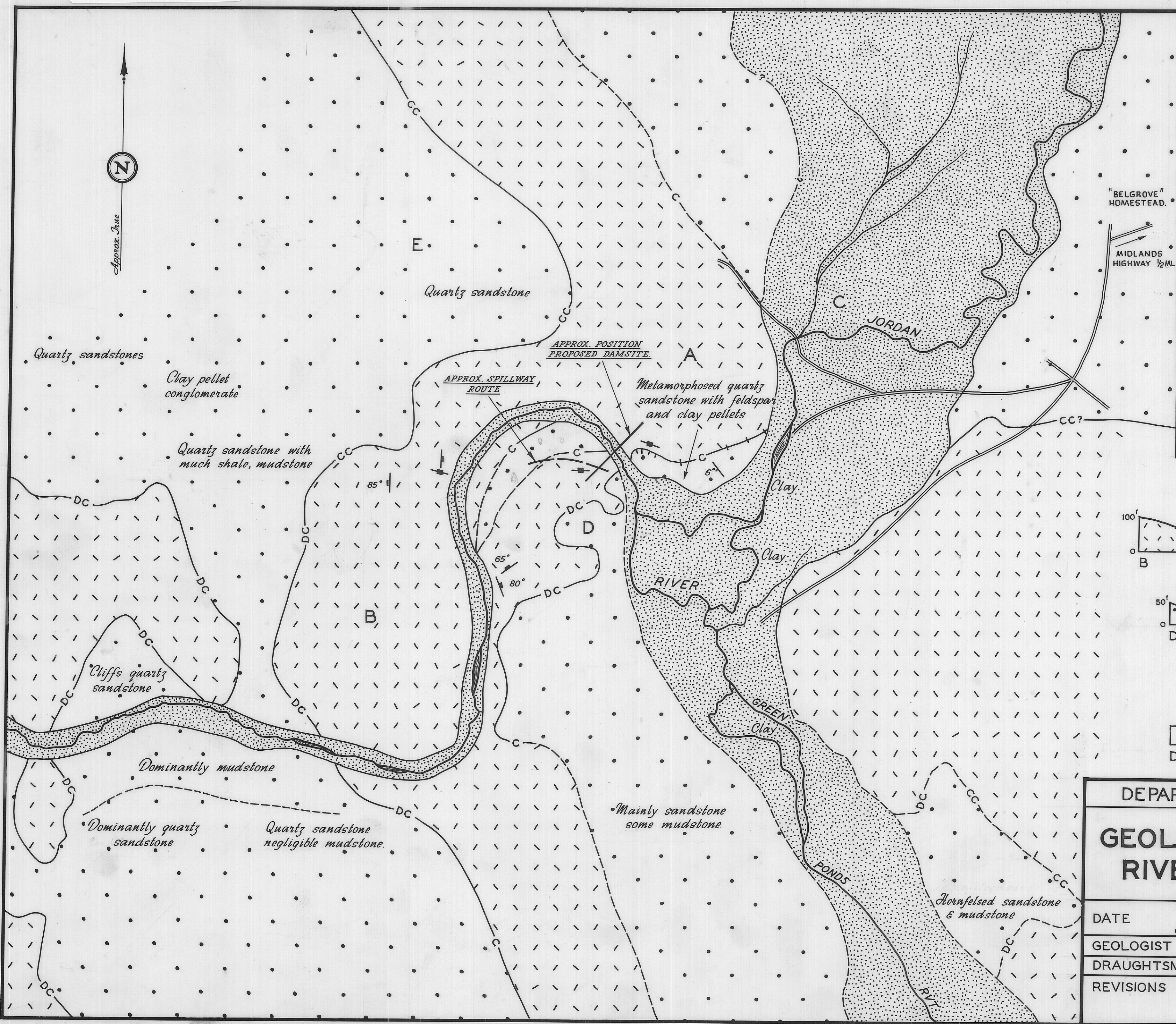


5 cm

LEGEND

- QUATERNARY Alluvium, clays, gravels, sand.
- JURASSIC Dolerite.
- TRIASSIC Quartz, sandstone & mudstone.
- Formation boundary - accurate.
- " " - approx.
- " " - inferred.
- Accurate igneous contact - hachuring indicates dip.
- Approx. igneous contact.
- Vertical contact.
- Discordant contact (other than near vertical) if dip unknown.
- Concordant contact.
- Strike and dip sediments.
- Vertical joint.
- Strike and dip joints.

N.B. Map compiled from aerial photographs, and is thus subject to some distortion.



DEPARTMENT OF MINES — TASMANIA	
GEOLOGY—PROPOSED JORDAN RIVER DAMSITE—KEMPTON	
DATE <i>June 1967</i>	Scale of feet 0 500 1000
GEOLOGIST <i>D. Leaman</i>	MAP SHEET & N° <i>Brighton 75</i>
DRAUGHTSMAN <i>P. Nankivell</i>	FILE N° 3050
REVISIONS	

Reduce to 4" 26.5"