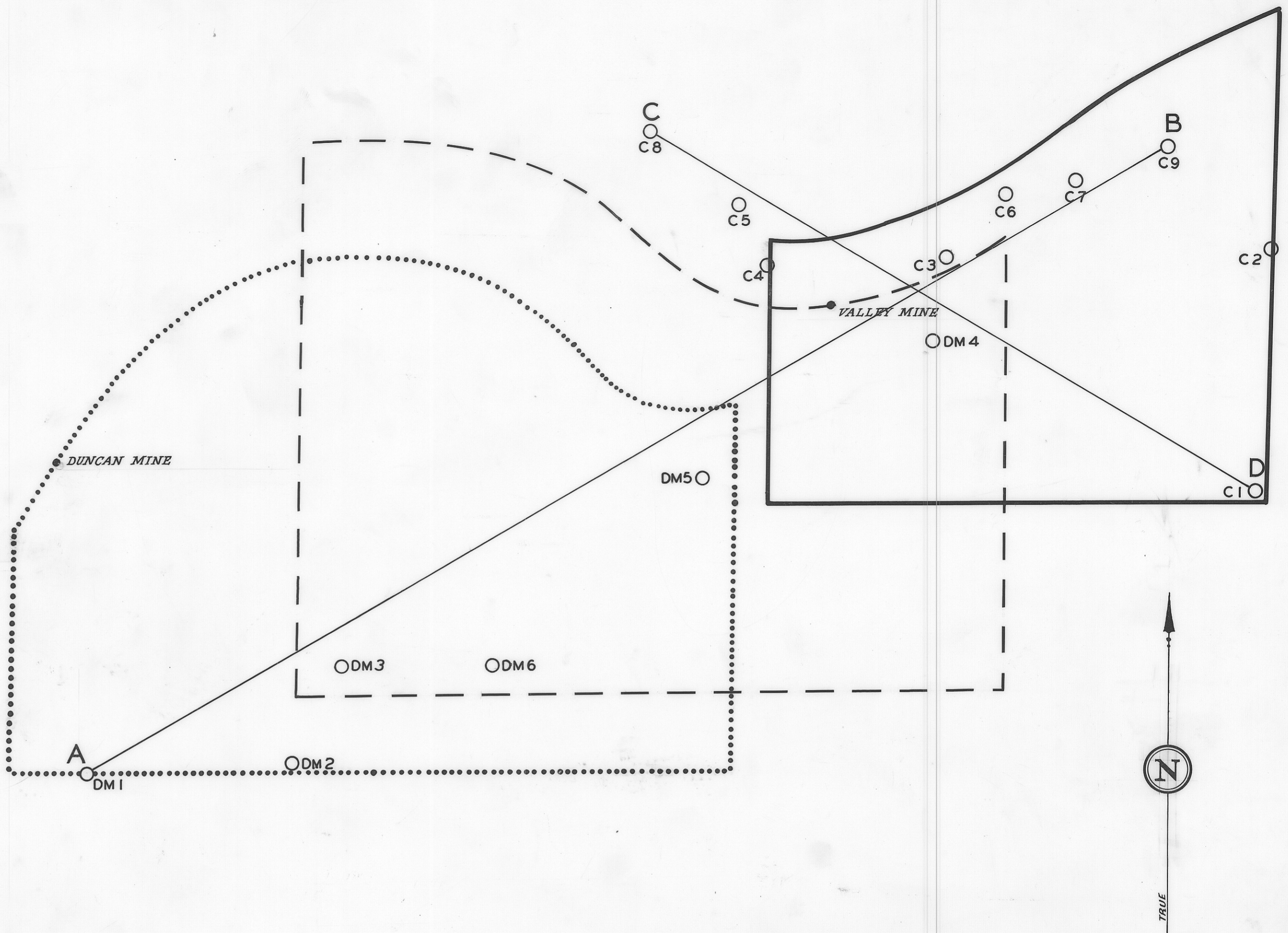
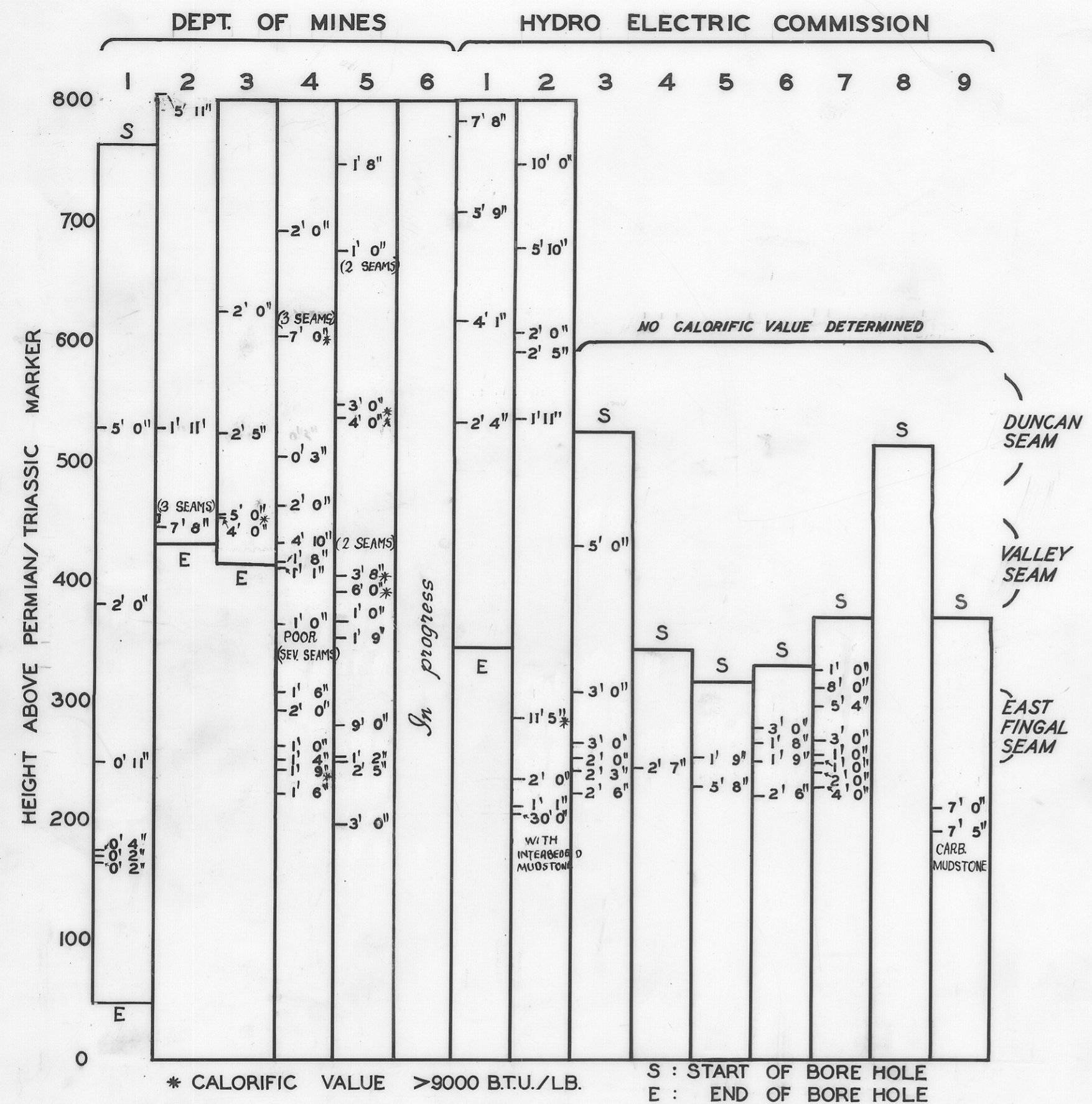
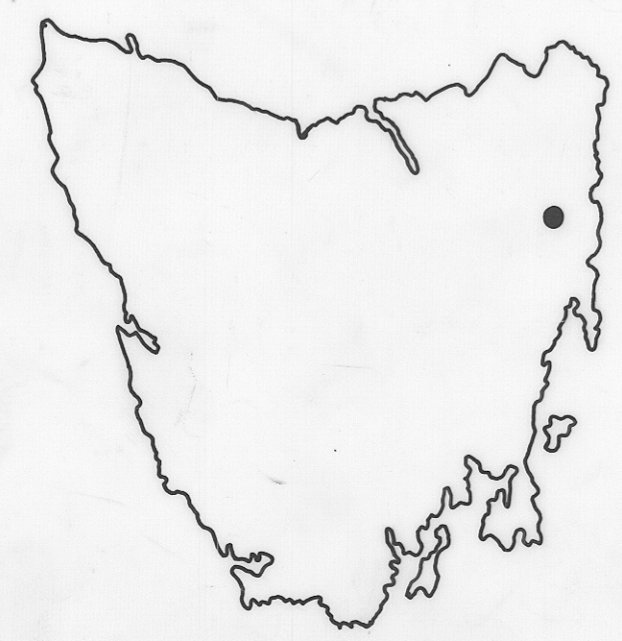


# SUMMARY OF BOREHOLE DATA



3060



LOCALITY MAP

	AREA (SQ. MLS)	TONNAGE (MILLIONS)
— East Fingal Seam	1.3	6.2
- Valley Seam	1.6	7.7
..... Duncan Seam	2.6	12.4
		26.3 total

Coal reserves estimates based on Dept. of Mines boreholes 1-5 and H.E.C. boreholes 1-9.

DEPARTMENT OF MINES — TASMANIA	
<b>ESTIMATED COAL RESERVES, DUNCAN VALLEY COLLIERIES AREA — FINGAL</b>	
DATE July 1967	Scale of feet 0 1000 2000 3000
GEOLOGIST V. Threader	MAP SHEET & N° ST MARYS 49
DRAUGHTSMAN J. Bellis	FILE N°
REVISIONS	<b>3060</b>

5 cm