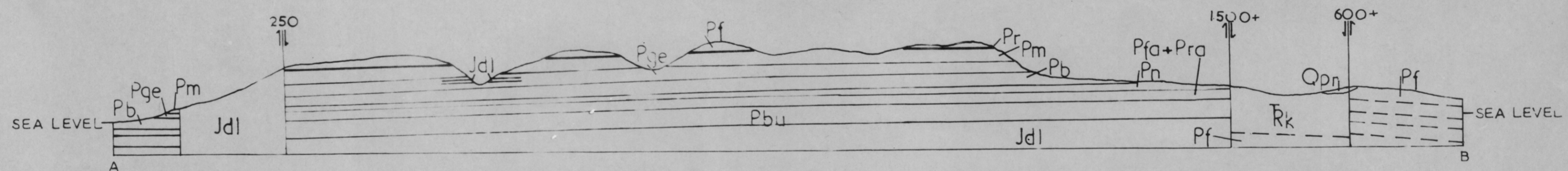
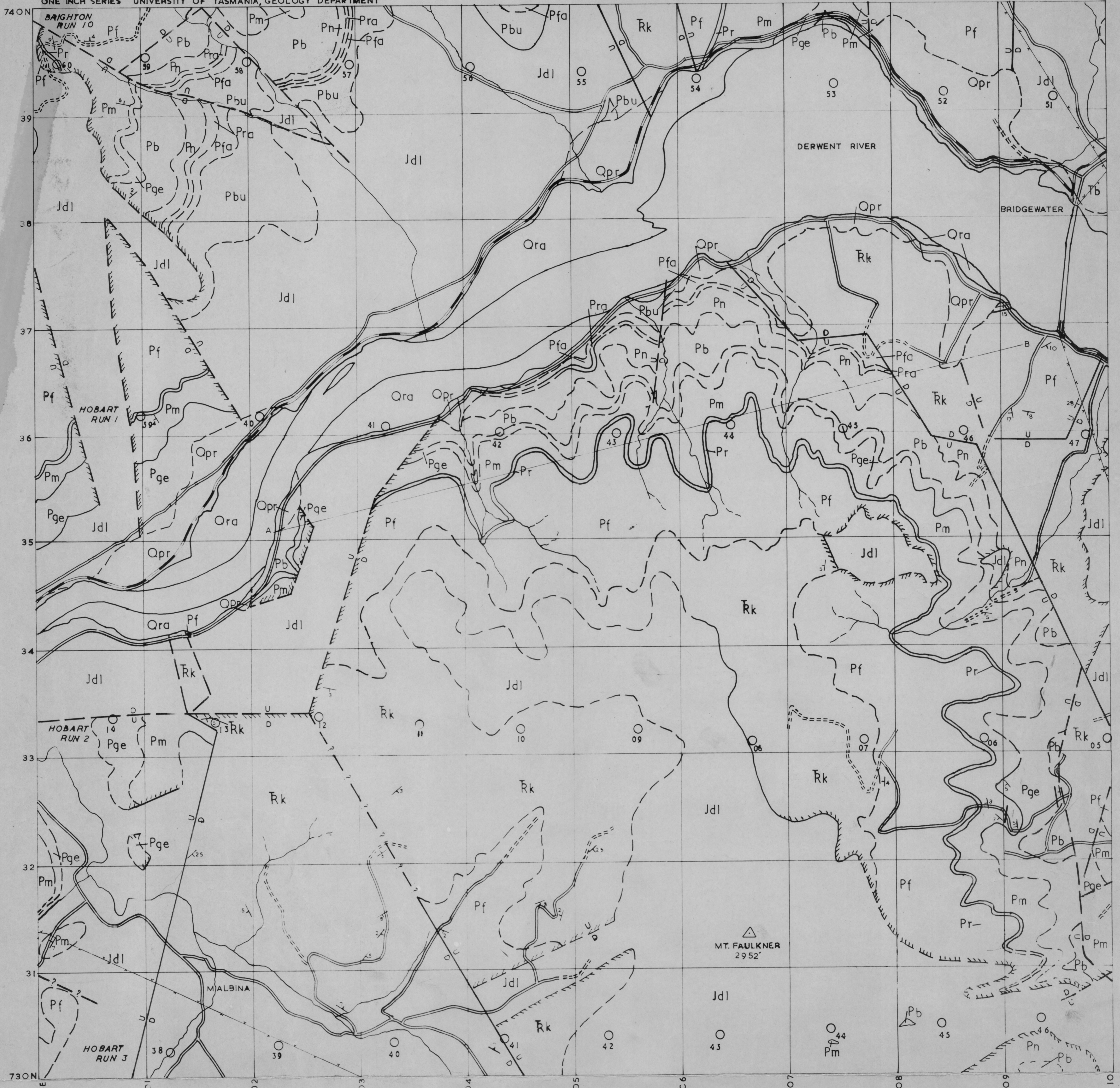


BRIDGEWATER

5073

GEOLOGY OF TASMANIA

ONE INCH SERIES UNIVERSITY OF TASMANIA, GEOLOGY DEPARTMENT



LEGEND

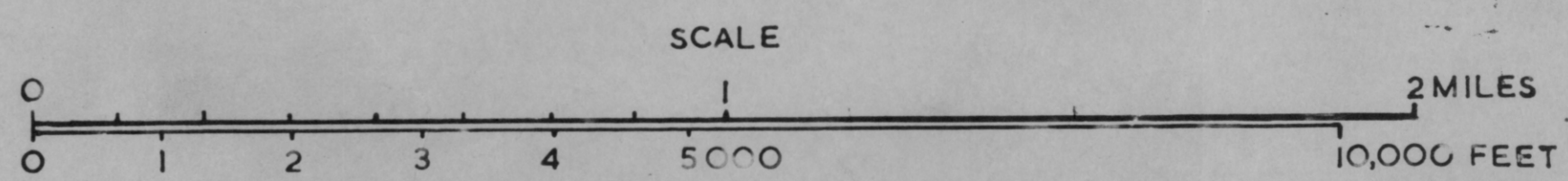
- FAULT WITH DOWNTHROWN SIDE INDICATED
- FAULT POSITION APPROXIMATE
- FAULT INFERRED
- FORMATION BOUNDARY
- FORMATION BOUNDARY POSITION APPROXIMATE
- Dolerite Boundaries:**
- CONCORDANT SILL
- DISCORDANT INTRUSIVE BOUNDARIES
- STRIKE AND DIP OF STRATA
- ROAD
- RAILWAY LINE
- VEHICULAR TRACK
- TRANSMISSION LINE

- Quaternary System**
- RECENT SERIES**
- ALLUVIUM
- PLEISTOCENE SERIES**
- RIVER GRAVELS
- Triassic System**
- KNOCKLOFTY FORMATION
- Permian System**
- FERN TREE MUDSTONE
- RISDON SANDSTONE
- MALBINA SILTSTONE & SANDSTONE
- GRANGE MUDSTONE
- BERRIDALE LIMESTONE
- NASSAU SILTSTONE
- RAYNER SANDSTONE
- FAULKNER GROUP
- BUNDELLA MUDSTONE

- IGNEOUS ROCKS**
- Tertiary System**
- BASALT
- Jurassic ? System**
- DOLERITE

Compilation from aerial photographs.
 Trigonometric Station Control by courtesy of the
 Department of Lands and Surveys, Hobart.
 Origin of co ordinates 400,000 yds. West
 and 1,800,000 yds. South of the True
 Origin of Zone 7 of the International Grid.

MAPPED AND COMPILED
 BY D. E. FEAD 1959.



RESTRICTED CIRCULATION
 25-9-64
 MB