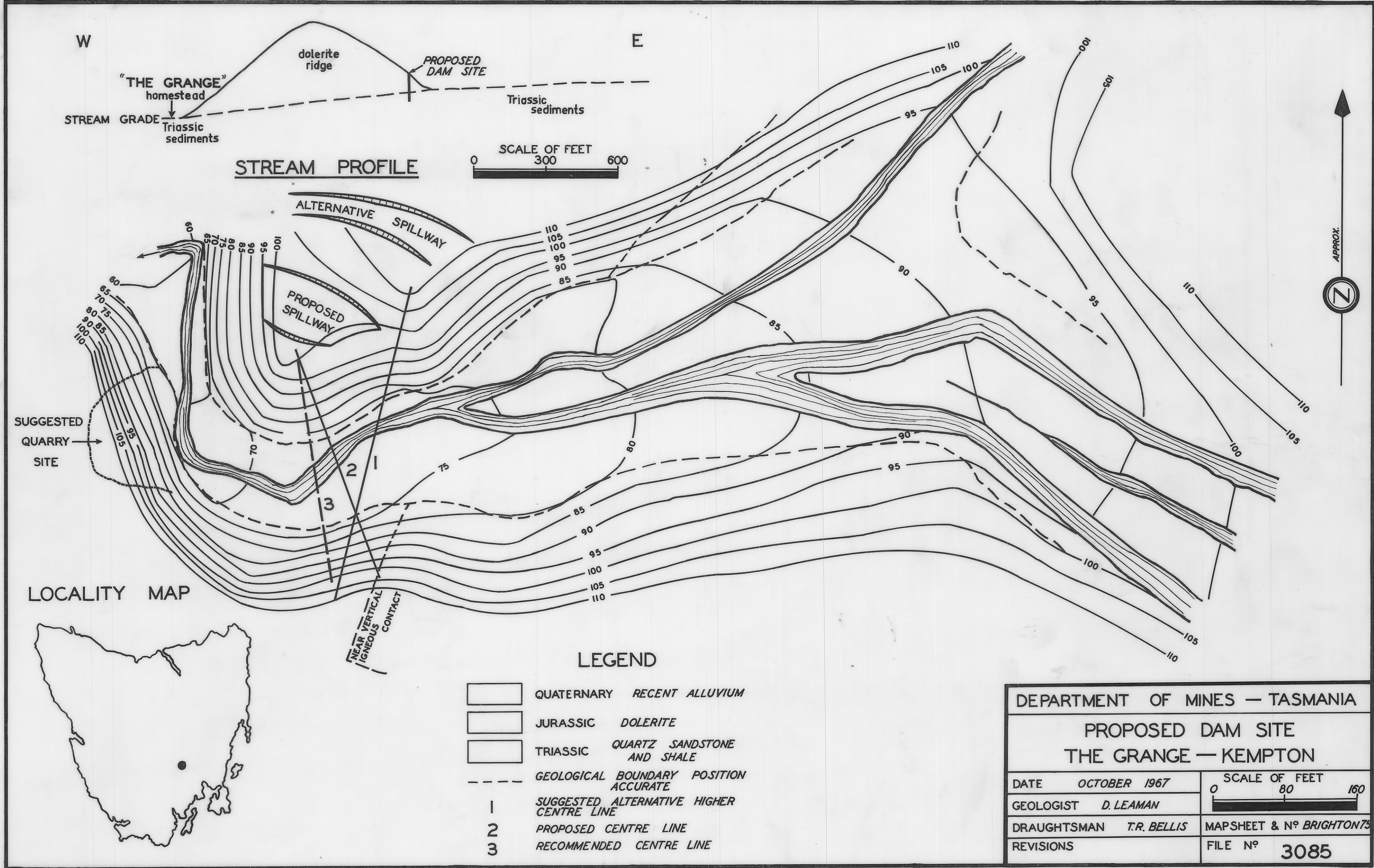


3085

88

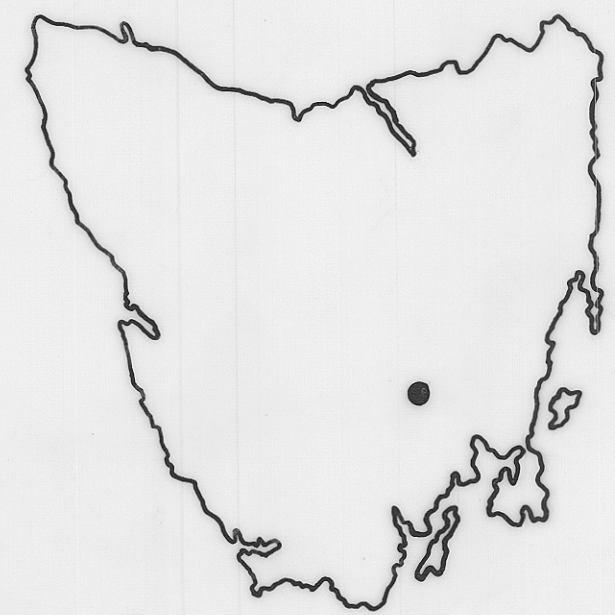


APPROX.

Reduce to 4" 33.3

fig 28

LOCALITY MAP



LEGEND

- QUATERNARY RECENT ALLUVIUM
- JURASSIC DOLERITE
- TRIASSIC QUARTZ SANDSTONE AND SHALE
- GEOLOGICAL BOUNDARY POSITION ACCURATE
- 1 SUGGESTED ALTERNATIVE HIGHER CENTRE LINE
- 2 PROPOSED CENTRE LINE
- 3 RECOMMENDED CENTRE LINE

DEPARTMENT OF MINES — TASMANIA	
PROPOSED DAM SITE	
THE GRANGE — KEMPTON	
DATE	OCTOBER 1967
GEOLOGIST	D. LEAMAN
DRAUGHTSMAN	T.R. BELLIS
REVISIONS	
SCALE OF FEET	
0 80 160	
MAPSHEET & N <sup>o</sup> BRIGHTON75	
FILE N <sup>o</sup> 3085	

