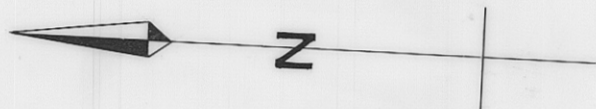
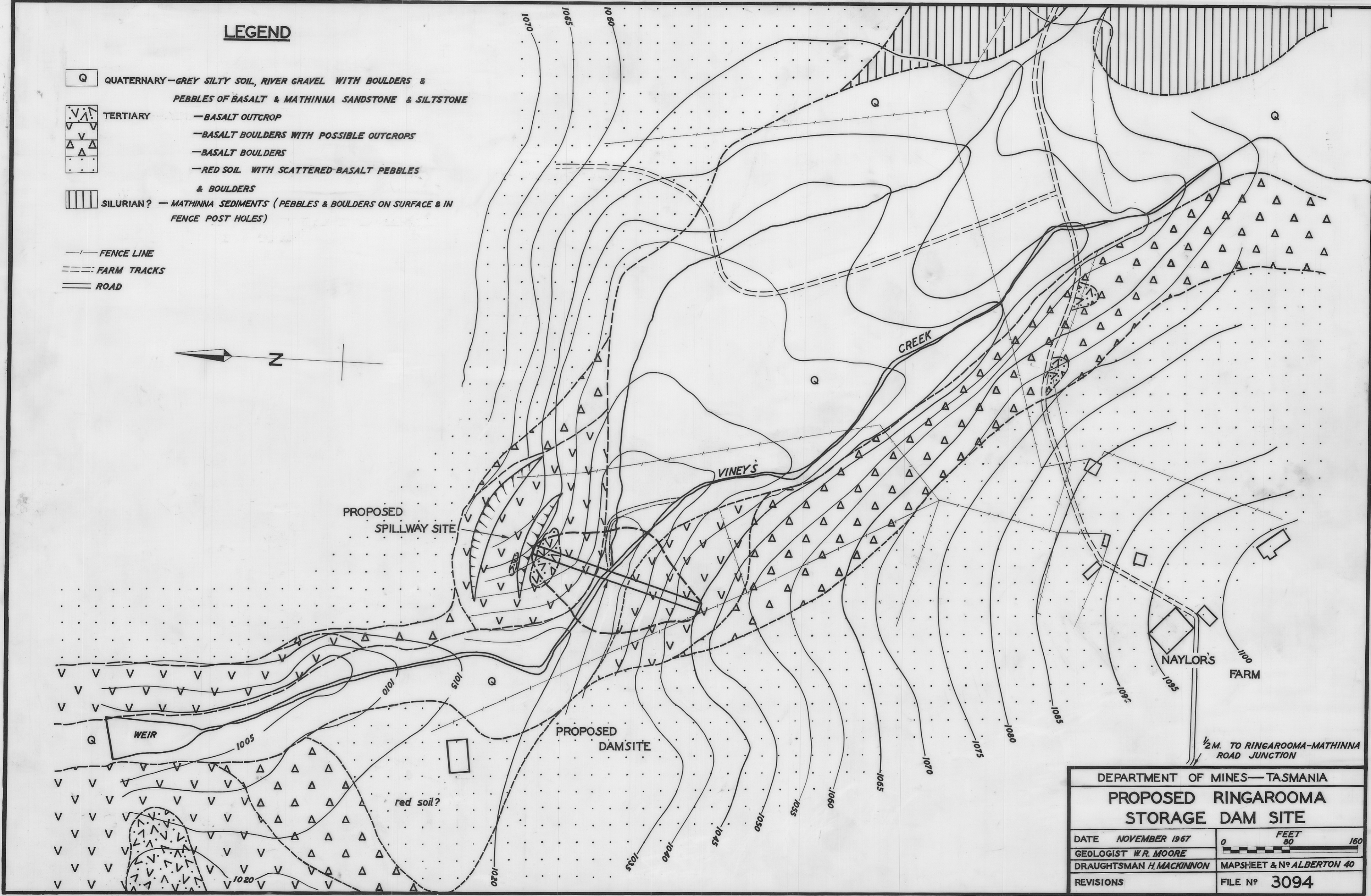


LEGEND

- Q QUATERNARY—GREY SILTY SOIL, RIVER GRAVEL WITH BOULDERS & PEBBLES OF BASALT & MATHINNA SANDSTONE & SILTSTONE
- TERTIARY
 - BASALT OUTCROP
 - BASALT BOULDERS WITH POSSIBLE OUTCROPS
 - BASALT BOULDERS
 - RED SOIL WITH SCATTERED BASALT PEBBLES & BOULDERS
- SILURIAN? — MATHINNA SEDIMENTS (PEBBLES & BOULDERS ON SURFACE & IN FENCE POST HOLES)
- FENCE LINE
- FARM TRACKS
- == ROAD



5 cm



Reduce to 4" 30.5

97

3094

DEPARTMENT OF MINES—TASMANIA	
PROPOSED RINGAROOMA STORAGE DAM SITE	
DATE NOVEMBER 1967	0 50 100 150 FEET
GEOLOGIST W.R. MOORE	MAPSHEET & N ^o ALBERTON 40
DRAUGHTSMAN H. MACKINNON	FILE N ^o 3094
REVISIONS	

Fig 30.