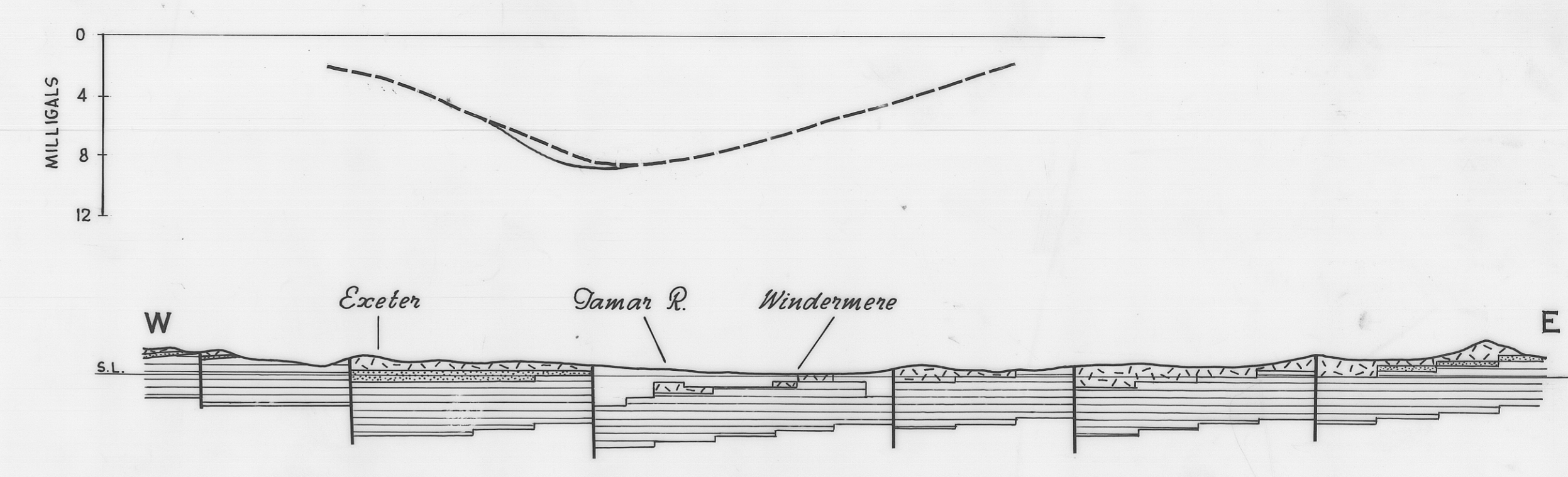
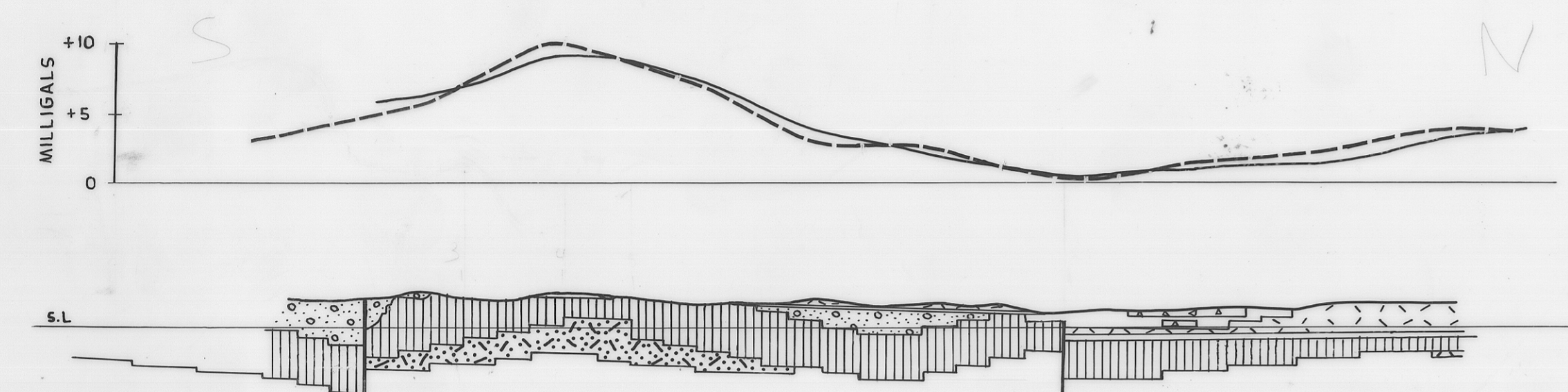


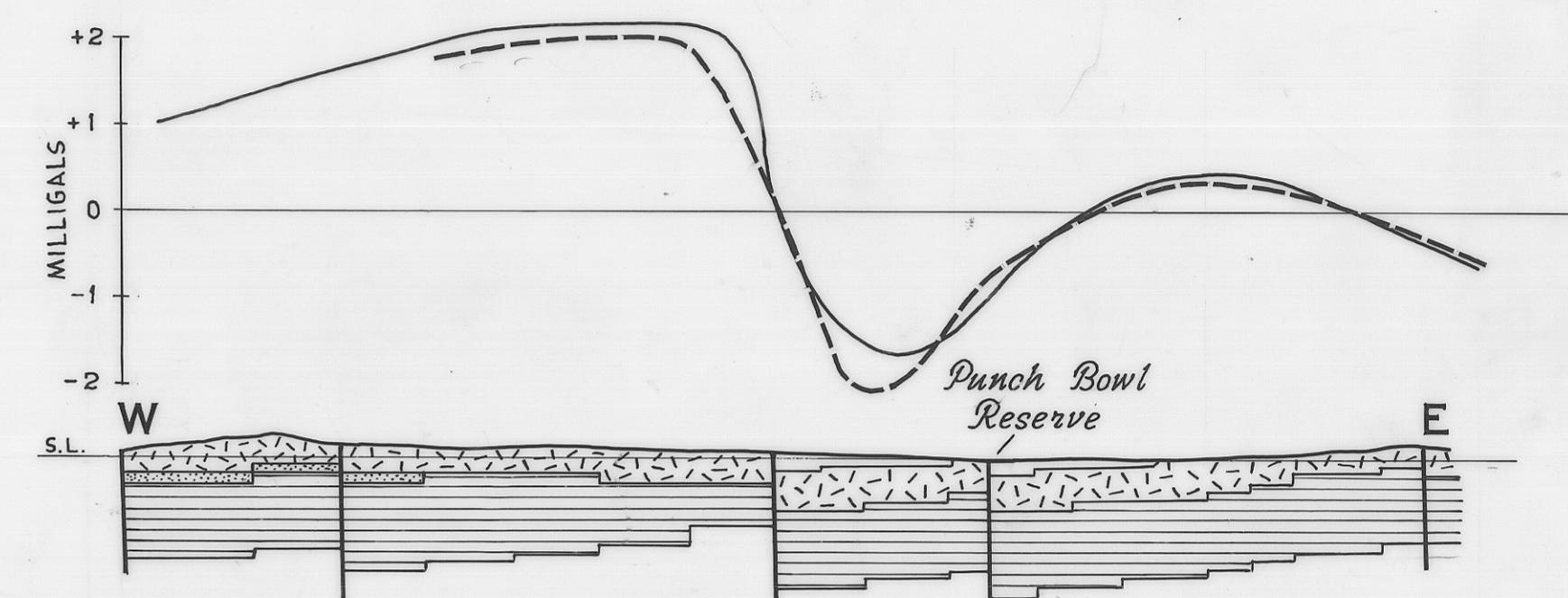
PORT SORELL



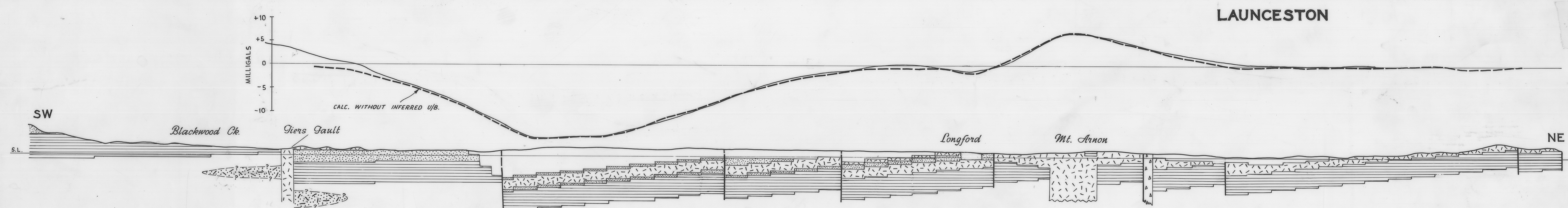
WINDERMERE



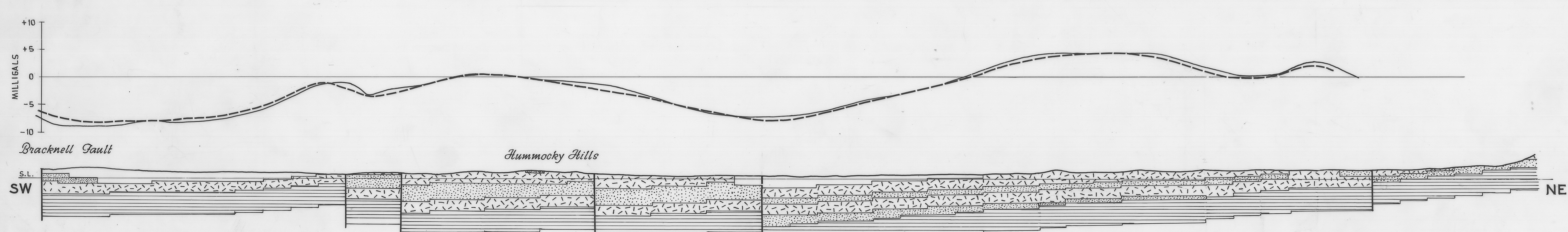
GOLDEN VALLEY - DELORAINE



LAUNCESTON



MT. ARNON



HUMMOCKY HILLS

	TERTIARY BASALT	DENSITY 2.00/3.00
	JURASSIC DOLERITE	2.90
	TRIASSIC	2.42
	PERMIAN	2.57
	ORDOVICIAN	2.72
	CAMBRIAN SEDIMENTS AND VOLCANICS	2.75
	CAMBRIAN SERPENTINITE	3.20
	PRE CAMBRIAN	2.67

DEPARTMENT OF MINES — TASMANIA  
**TERTIARY BASINS OF TASMANIA**  
**GRAVITY MODELS & PROFILES**

DATE :- JANUARY 1968	SCALE OF MILES 0 1 2 3
GEOLOGIST :- M. LONGMAN & D. LEAMAN	MAP SHEET & NO
DRAUGHTSMAN :- P. B. NANKIVELL	FILE NO
REVISIONS	<b>3117</b>

— OBSERVED — CALCULATED  
 | FAULT

3117