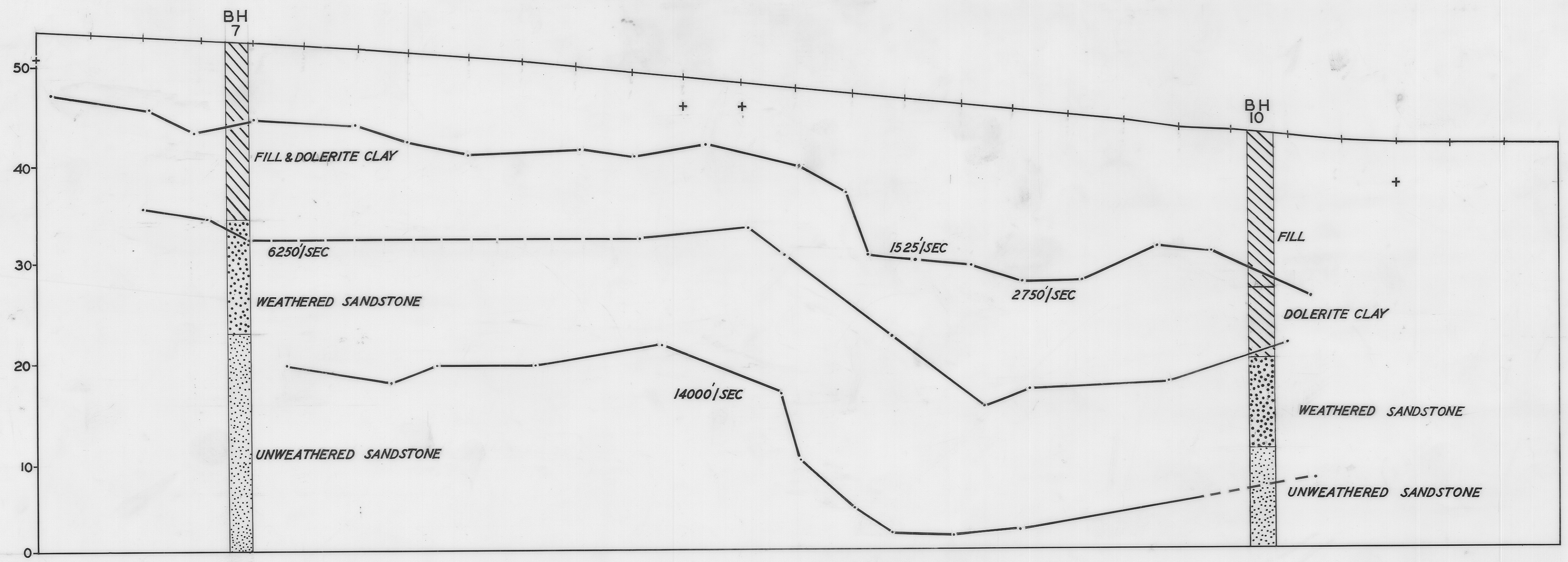
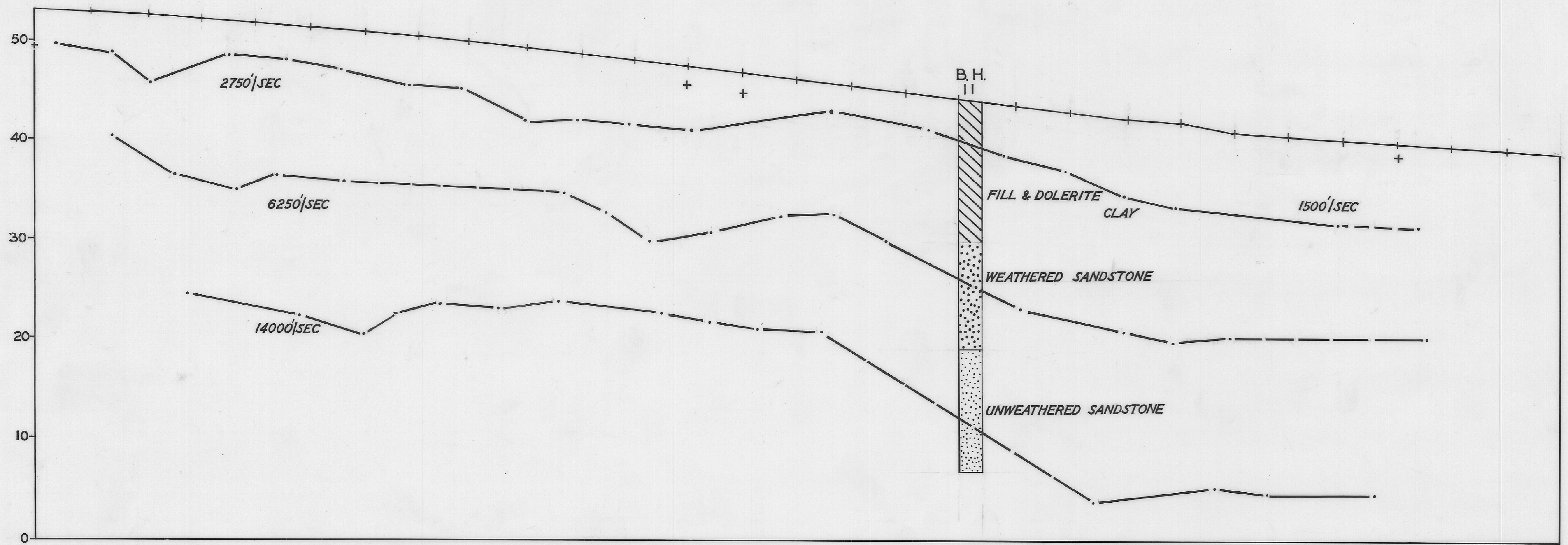


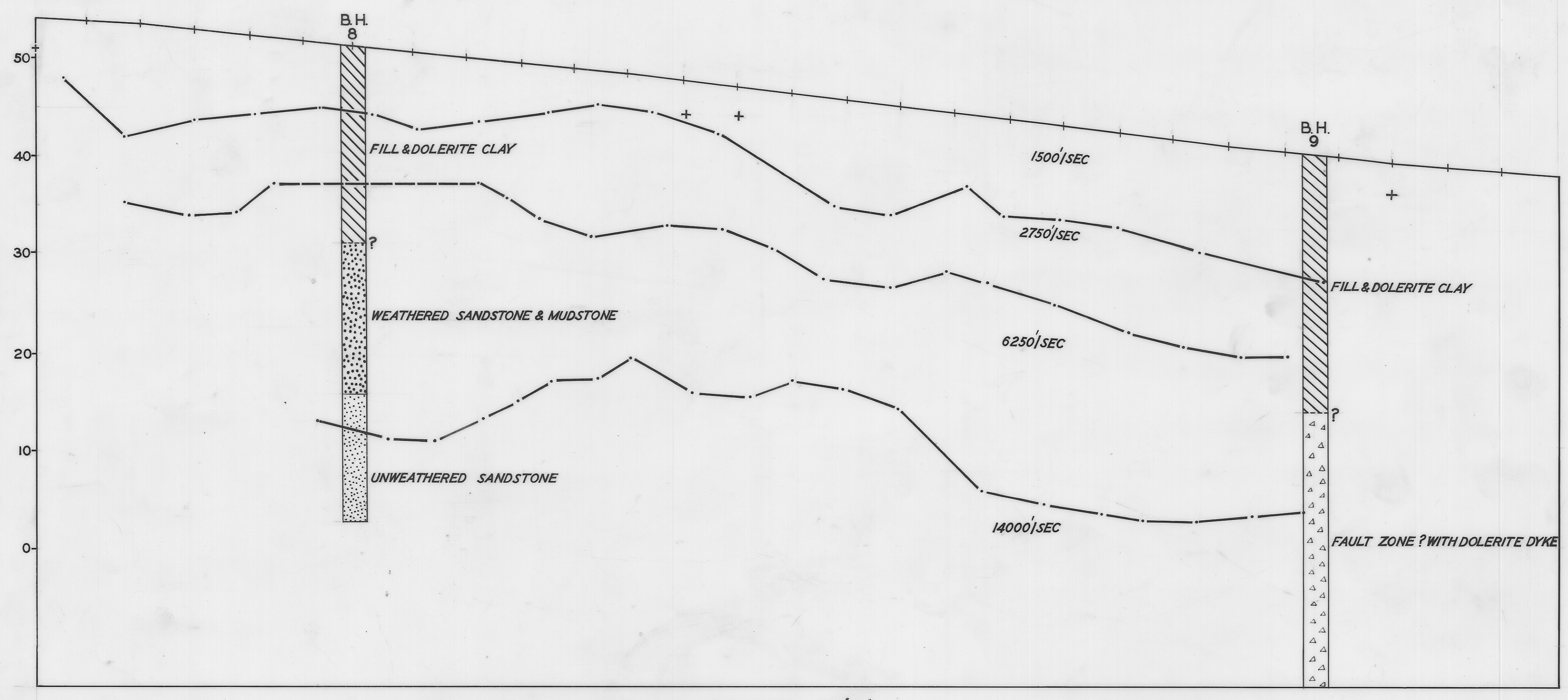
5 cm



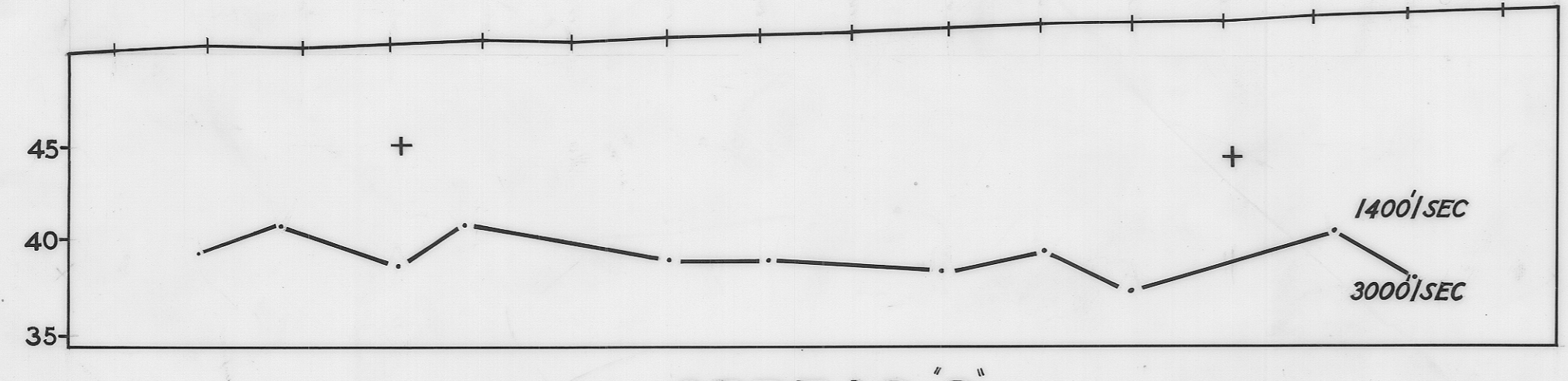
SPREAD A



SPREAD B



SPREAD C



SPREAD D

+ SHOT POINTS  
 — GEOPHONE POSITION  
 HEIGHTS BASED ON STATE DATUM

DEPARTMENT OF MINES — TASMANIA	
EXTENSIONS TO STATE LIBRARY	
SEISMIC PROFILES	
DATE MARCH 1968	VERTICAL & HORIZONTAL SCALE 0 5 10 20 FEET
GEOPHYSICIST—M. J. LONGMAN	SURVEYOR—B. KNOX
DRAUGHTSMAN—H. MACKINNON	MAP SHEET & N°—HOBART 82
REVISIONS—	FILE N°— <b>3131</b>

Reduce to 4" fig 15