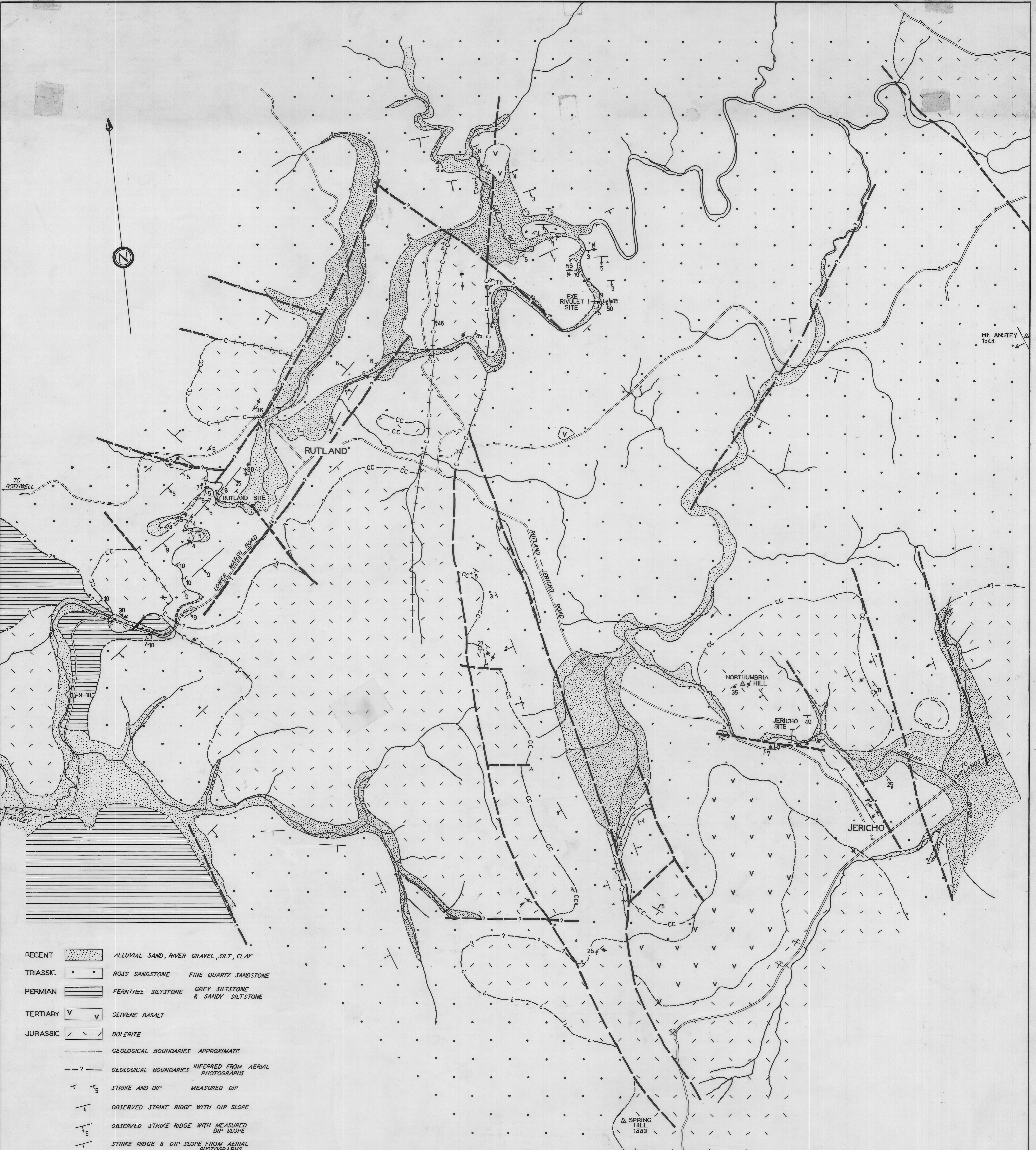


5 cm



- RECENT ALLUVIAL SAND, RIVER GRAVEL, SILT, CLAY
- TRIASSIC ROSS SANDSTONE FINE QUARTZ SANDSTONE
- PERMIAN FERNTREE SILTSTONE GREY SILTSTONE & SANDY SILTSTONE
- TERTIARY OLIVINE BASALT
- JURASSIC DOLERITE

- GEOLOGICAL BOUNDARIES APPROXIMATE
- GEOLOGICAL BOUNDARIES INFERRED FROM AERIAL PHOTOGRAPHS
- STRIKE AND DIP MEASURED DIP
- OBSERVED STRIKE RIDGE WITH DIP SLOPE
- OBSERVED STRIKE RIDGE WITH MEASURED DIP SLOPE
- STRIKE RIDGE & DIP SLOPE FROM AERIAL PHOTOGRAPHS
- JOINTS VERTICAL JOINTS

- CONFORMABLE CONTACT
- VERTICAL CONTACT
- FAULTED CONTACT WITH MOVEMENT POST INTRUSIONS
- FAULT OBSERVED
- FAULT APPROXIMATE
- FAULT INFERRED

- CENTRE LINE OF PROPOSED DAM SITE
- QUARRY OR METAL PIT
- TRIG. POINT
- BITUMEN HIGHWAY
- GRAVEL ROADS



MAP PRODUCED FROM AERIAL PHOTOGRAPHS NO GROUND CONTROL

DEPARTMENT OF MINES — TASMANIA

**GEOLOGY OF DAM SITES
JORDAN RIVER — RUTLAND
EXE RIVULET AND JERICO**

DATE MARCH 1968
GEOLOGIST W.R. MOORE
DRAUGHTSMAN T.R. BELLIS
REVISIONS

SCALE OF CHAINS
0 20 40 80
MAP SHEET & N^o OATLANDS 68
FILE N^o 3132

Return to 54