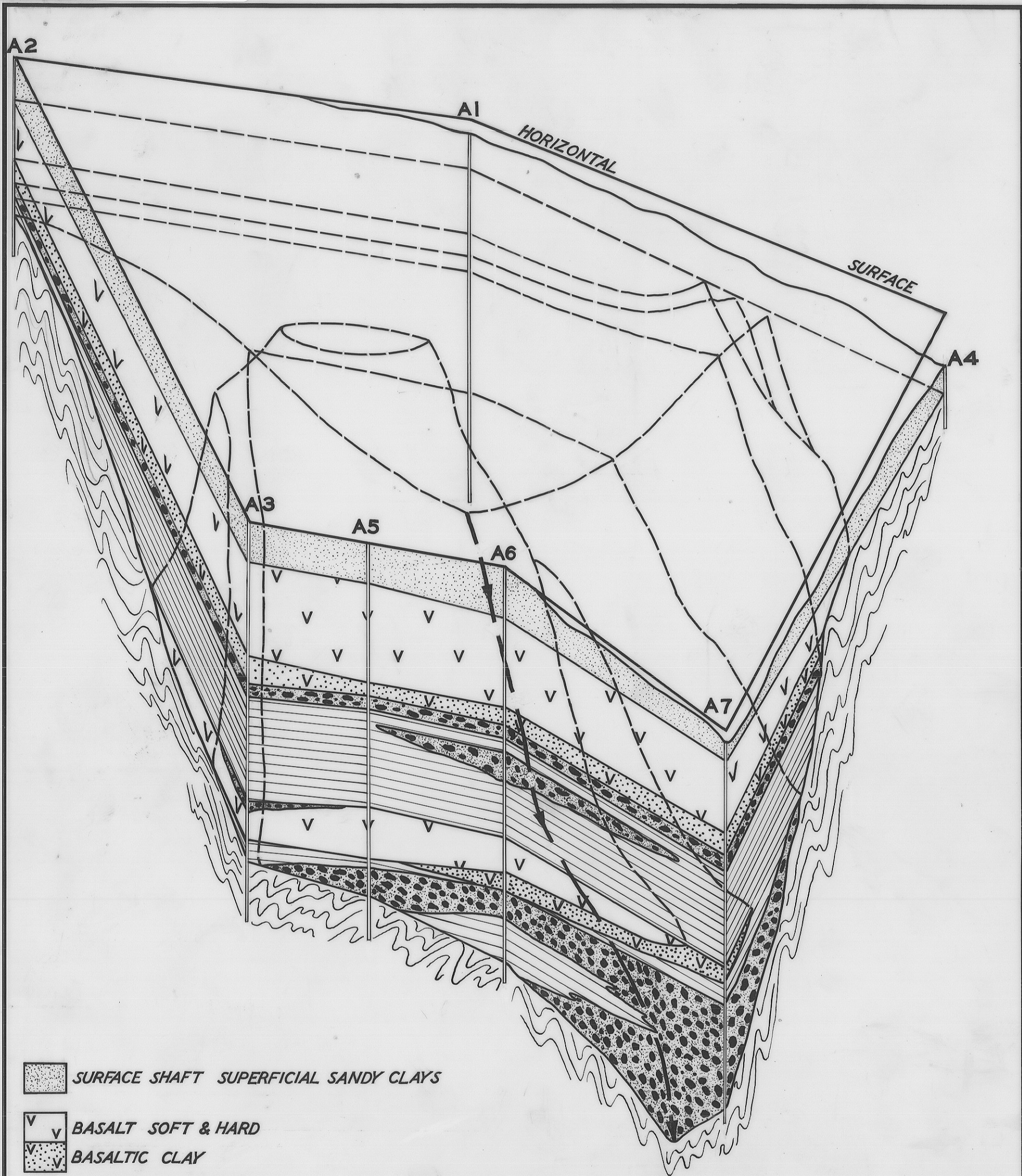
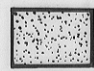
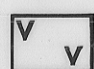






3142

148

5 cm



-  SURFACE SHAFT SUPERFICIAL SANDY CLAYS
-  BASALT SOFT & HARD
-  BASALTIC CLAY
-  BLACK BLUE BROWN SANDY CLAYS WITH WOOD FRAGMENTS & SOMETIMES SPARSE PEBBLES
-  GRAVEL DRIFT WASH WITH OR WITHOUT CEMENT
-  MATHINNA BEDS

A1-A7 BORE HOLES

- - - - - TRACE OF GUTTER AT BASE OF LEAD

SCALES OF FEET

HORIZONTAL 0 120 240

VERTICAL 0 60 120

V.E. 2:1

DEPARTMENT OF MINES — TASMANIA	
PANEL DIAGRAM OF THE FIRST SERIES (1882-83) OF BOREHOLES AT BACK CREEK	
DATE	APRIL 1968
GEOLOGIST	B. MARSHALL
DRAUGHTSMAN	H. MACKINNON
REVISIONS	
SCALE AS INDICATED	
MAP SHEET & N° PIPERS R.31	
FILE N° 3142	

FIG 66