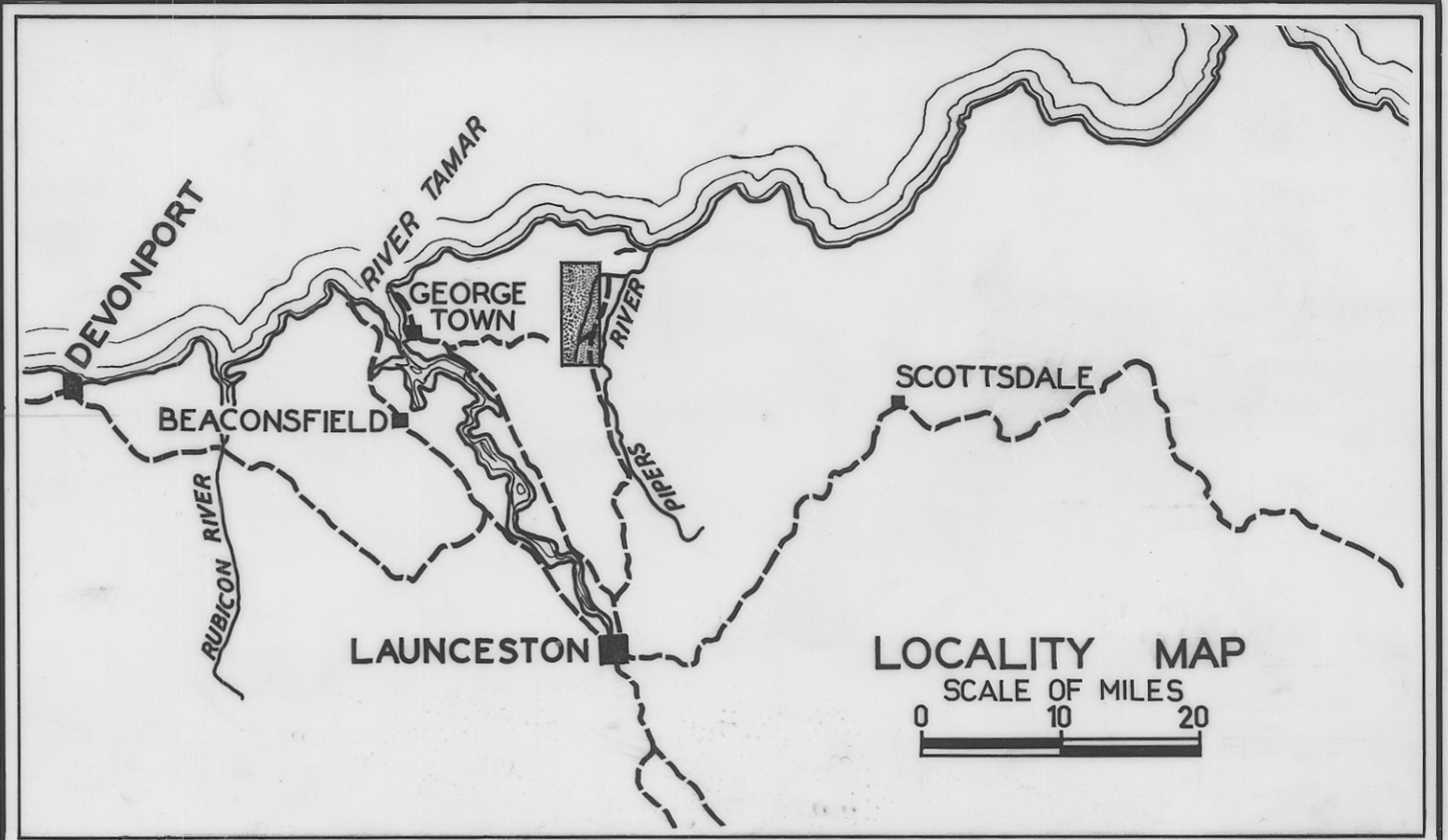
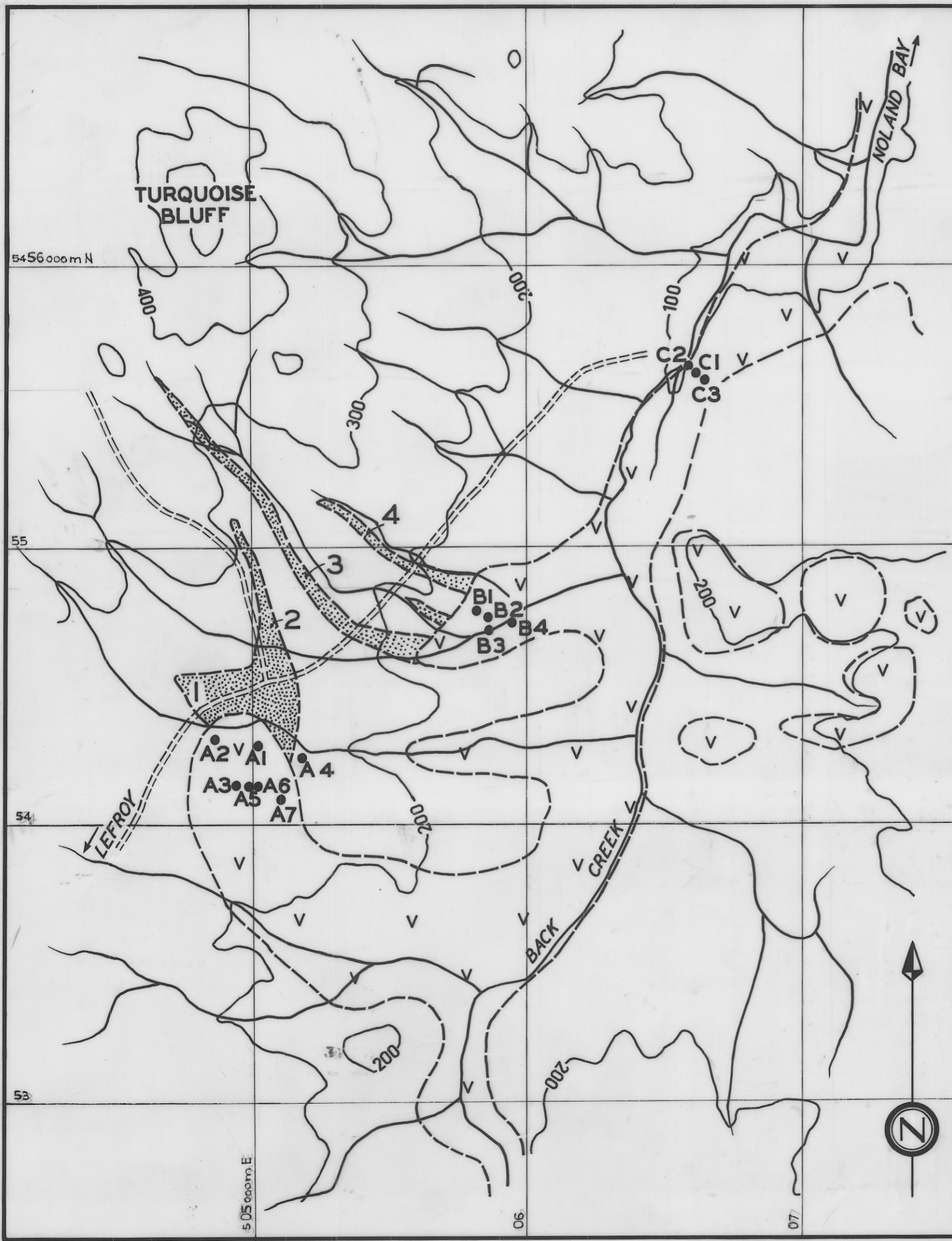


3147

150

5 cm

36



(a) Positions and numeration of boreholes:-
 A1 A4 A7 — Fairly certain } From Montgomery 1894
 A3 A5 A6 — Position fairly certain, numbers assigned: less certain }
 A2 — Most uncertain } From Thureau 1882
 B1 B2 B3 B4 — Certain } From Montgomery 1894
 C1 C2 C3 — Certain } From Broadhurst 1935

(b) The leads are positioned with reference to the remaining open cuts and shafts, and Montgomery (1894).

(c) In transferring data from old plans of variable scale and dubious accuracy, errors inevitably arise. Such errors have been minimised but not completely eradicated.

- 1 Cardigan or Prince of Wales Lead
 - 2 Old or Back Creek or Blackman's Lead
 - 3 Red or Albion Lead
 - 4 White Lead
- A1-A7 Boreholes 1882-83
 B1-B4 Boreholes 1889
 C1-C3 Boreholes 1932

v v Distribution of Basalt
 [Stippled Box] Distribution of Tertiary Leads

DEPARTMENT OF MINES — TASMANIA	
LOCATION OF BOREHOLES AND TERTIARY DEEP LEADS BACK CREEK	
DATE APRIL 1967	SCALE OF MILES 0 4 8
GEOLOGIST B. MARSHALL	
DRAUGHTSMAN T.R. BELLIS	MAPSHEET & N° PIPER RIVER 31
REVISIONS	FILE N° 3147

Reduce to 4"

FIG 5