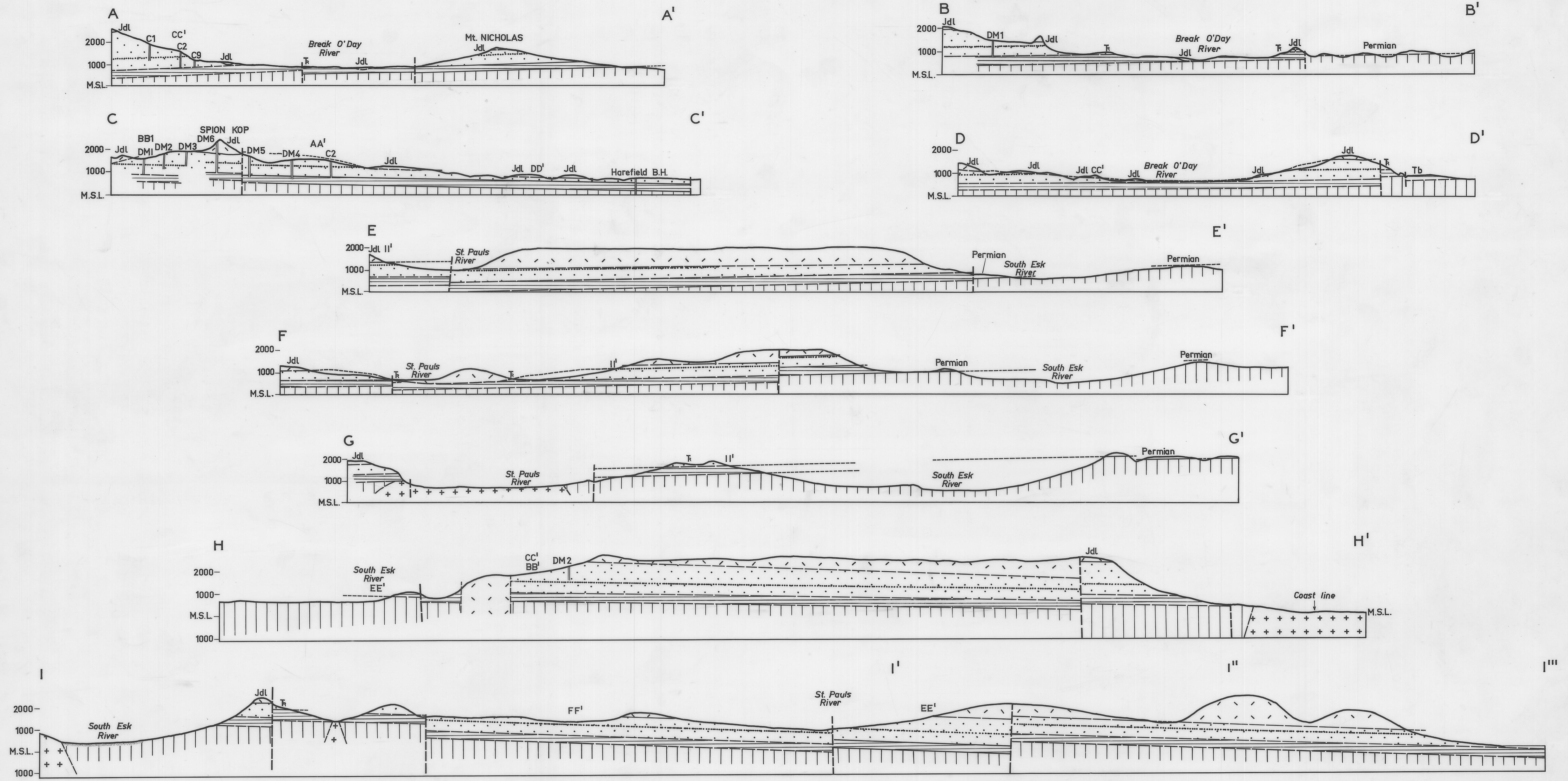
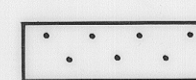


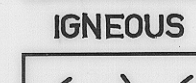




3168



-  TRIASSIC
-  PERMIAN
-  SILURIAN *Mathinna Group*
- IGNEOUS**
-  JURASSIC *Dolerite*
-  DEVONIAN *Granite*
-  Approximate position of Duncan Seam



DEPARTMENT OF MINES — TASMANIA	
<b>GEOLOGICAL SECTIONS NORTH EAST TASMANIA COALFIELDS</b>	
DATE JULY 1968	SCALE AS SHOWN
GEOLOGIST V.M. THREADER	
DRAUGHTSMAN T.R. BELLIS	MAPSHEET & N° 48 49 55 56
REVISIONS	FILE N° 3168

Fig 4  
REDUCE TO 8"