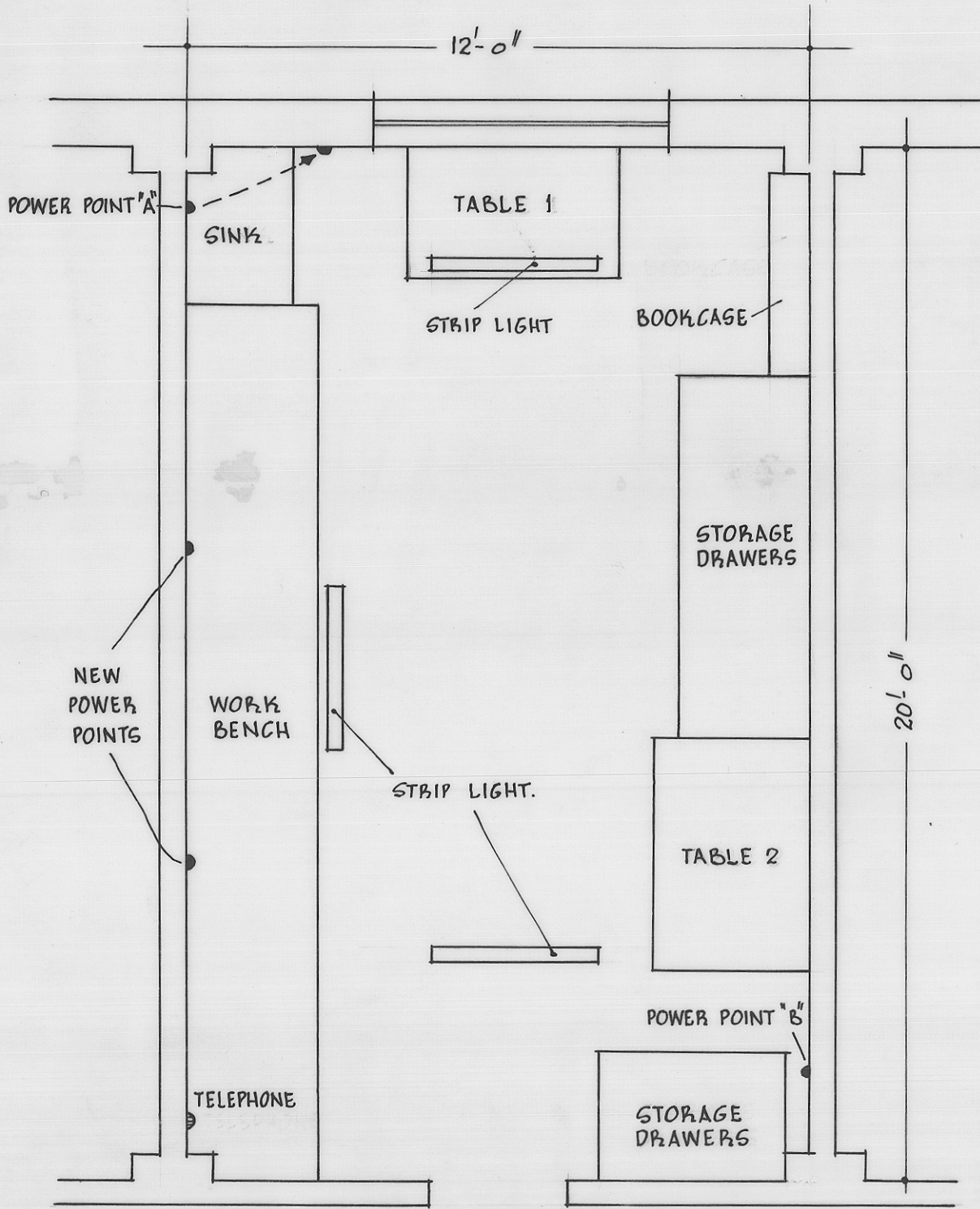


5 cm

PALAEONTOLOGY LAB - ROOM 22 - BASEMENT
PROPOSED IMPROVEMENTS



INSTAL WORKBENCH AND SINK ALONG LEFT HAND WALL. WORKBENCH 2'-6" WIDE AND 3'-0" HIGH WITH DRAWERS UNDER. SHIFT POWER POINT "A" TO POSITION INDICATED AND INSTAL 2 NEW POWER POINTS ABOVE WORKBENCH.