

REFERENCE

QUATERNARY

- Qra Alluvium and swamp deposits-Qra(Sn)-tin bearing.
- Qt Talus deposits-(Qtu)of ultrabasics,(Qtp) of porphyry.
- Qf Fluvioglacial deposits.
- Qm Moraine.

TERTIARY

- Tg Gravel, grit, sand and clay.

DEVONIAN

- Db Bell Shale.
- Df Florence Quartzite.

SILURIAN

ELDON GROUP

- Sac Austral Creek Siltstone.
- Sk Keel Quartzite.
- Sa Amber Slate.
- Sc Crotty Quartzite.

SILURIAN-DEVONIAN

- DS Undifferentiated quartzite, siltstone and shale.

ORDOVICIAN

- Og Gordon Limestone.
- Oz Mt. Zeehan Conglomerate.

CAMBRIAN

UNCONFORMITY

- Ed Dundas Group and correlatives.
- egc Greywacke conglomerate-sandstone and mudstone sequence.
- ewg Greywacke sandstone and mudstone sequence of the Waratah River.
- ecm Mudstone and greywacke sequence of the Coldstream River.
- cam Red mudstone and sandstone sequence of the Arthur River.
- cc Crimson Creek Formation.
- c Probable correlatives of Crimson Creek Formation.
- cu Undifferentiated sedimentary sequence.
- cr 'Rosebery Group' minus Stitt Quartzite.

PRECAMBRIAN

UNCONFORMITY ?

- Pcb Quartzite mudstone and dolomite of Mt. Bischoff.
- Pco Oonah Quartzite and Slate.
- Pcs Stitt Quartzite.
- Pcw Whyte Schist.

IGNEOUS ROCKS

TERTIARY

- Tb Basalt.

JURASSIC

- Jd Dolerite.

DEVONIAN

- Dp Quartz porphyry.
- Dqt Tourmalinized granite.
- Dmg Microgranite dyke with tourmaline nodules.
- Dg Meredith Granite.

CAMBRIAN

- ep Predominantly quartz and feldspar porphyries (Mt. Read Volcanics)
- ei Intermediate igneous suite (albite syenite and granophyre)
- eb Basic igneous suite (gabbro, ebg dolerite-ebd spillite, ebs and agglomerate eba)
- eu Ultrabasic igneous suite (pyroxenite and peridotite)
- es Serpentinite.
- e Undifferentiated predominantly igneous rocks.

--- Geological boundary - approximate.

- - - - - Geological boundary - inferred.

60 Strike and dip of beds.

70 Strike and dip of beds - overturned.

80 Strike and dip of cleavage.

↑ Fold axis.

--- Fault - approximate position (Downthrown side indicated)

--- Major jointing in granite.

⊗ Mine or prospect.

△ Trend line (Photo-interpretation)

△ Trig station.

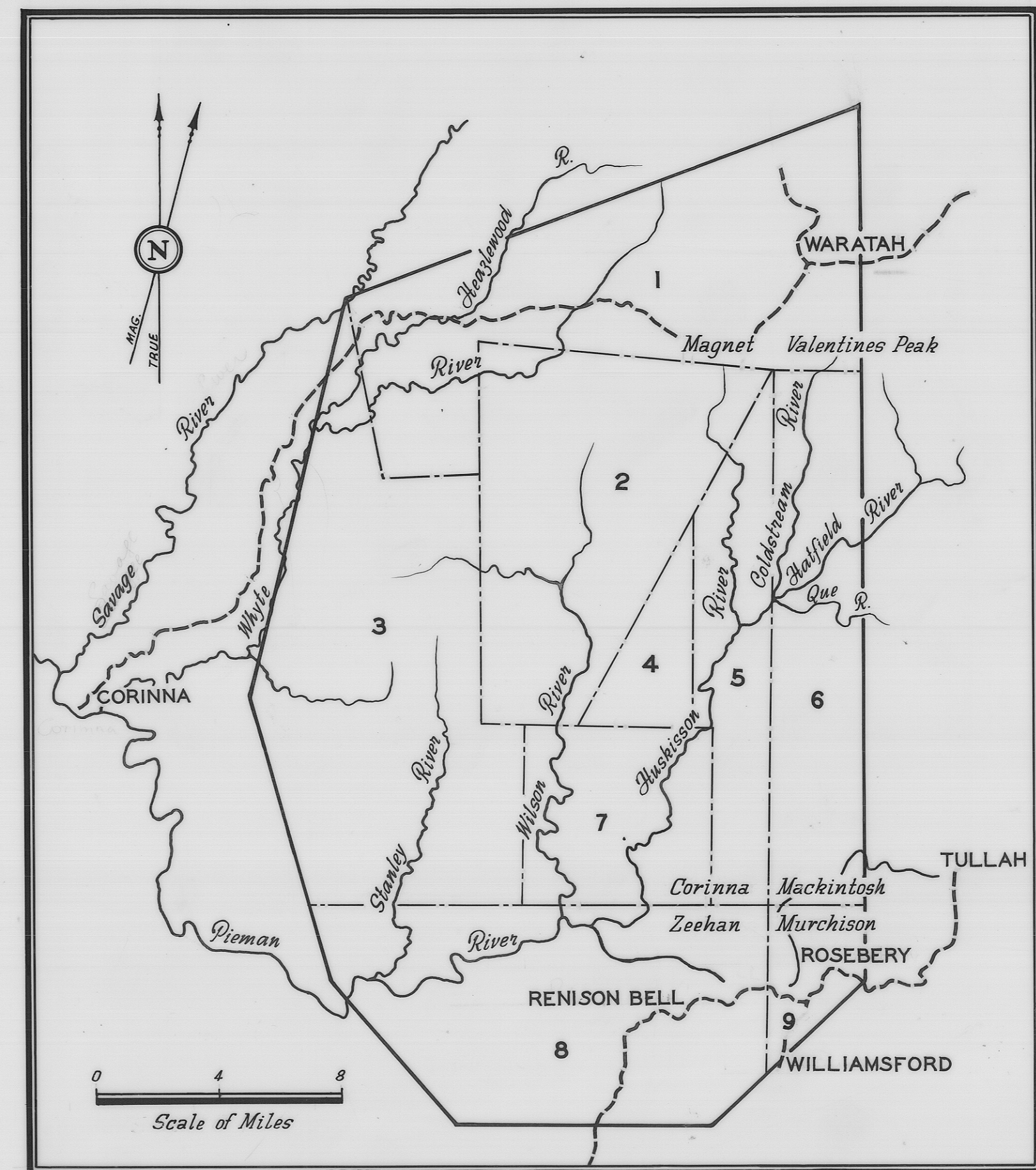
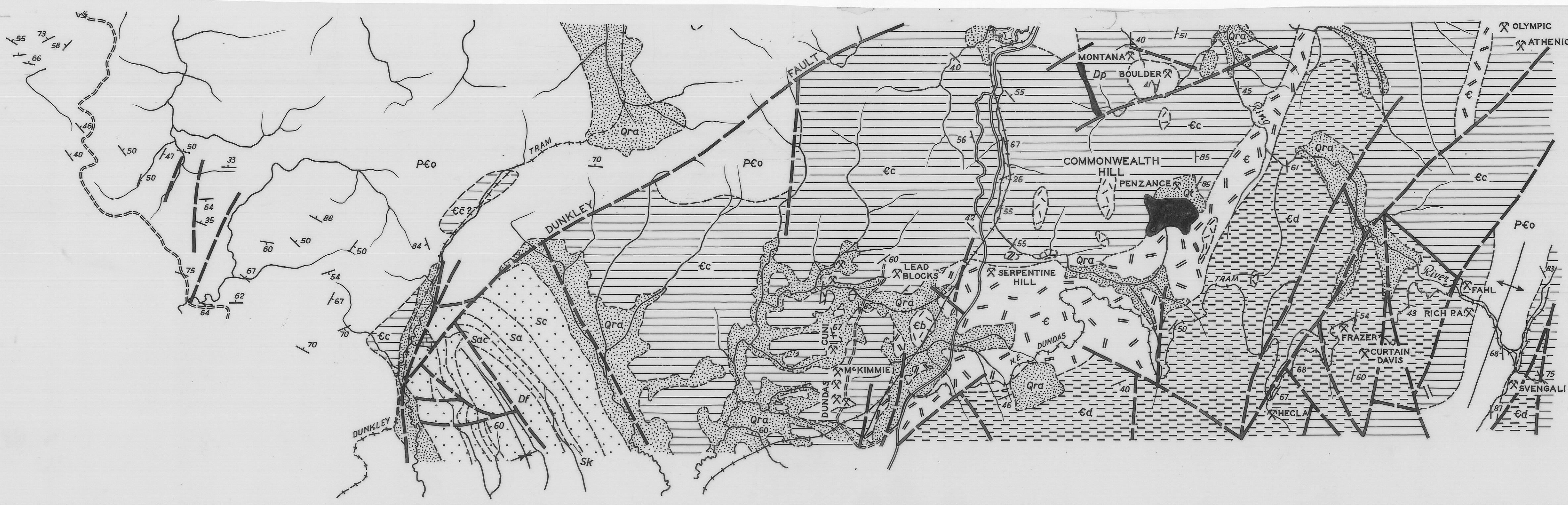
--- Road.

--- Vehicular or pack track.

--- Railway.

--- Tramway.

○ Lake or dam.



SOURCE OF INFORMATION FOR GEOLOGIC MAP

1. Detailed and regional mapping D.I. Groves (1962-1967)
2. Regional and reconnaissance mapping D.I. Groves and R. Jack (1964)
3. Photo-interpretation with scattered information from L.L. Waterhouse (1914) and G. Urquhart (1966)
4. Photo-interpretation D.I. Groves (1967)
5. Compilation of mapping by Rio Tinto Australian Exploration Pty. Ltd.
6. Mackintosh 1 mile to 1 inch map sheet, Tasmanian Dept. of Mines (1966) with some modifications.
7. Compilation of traverses by B.L. Taylor (1954)
8. Zeehan 1 mile to 1 inch map sheet, Tasmanian Dept. of Mines (A.H. Blissett and A.B. Gulline 1962)
9. Sketch map from information by G. Loftus - Hills and R.L. Braithwaite (1967)

