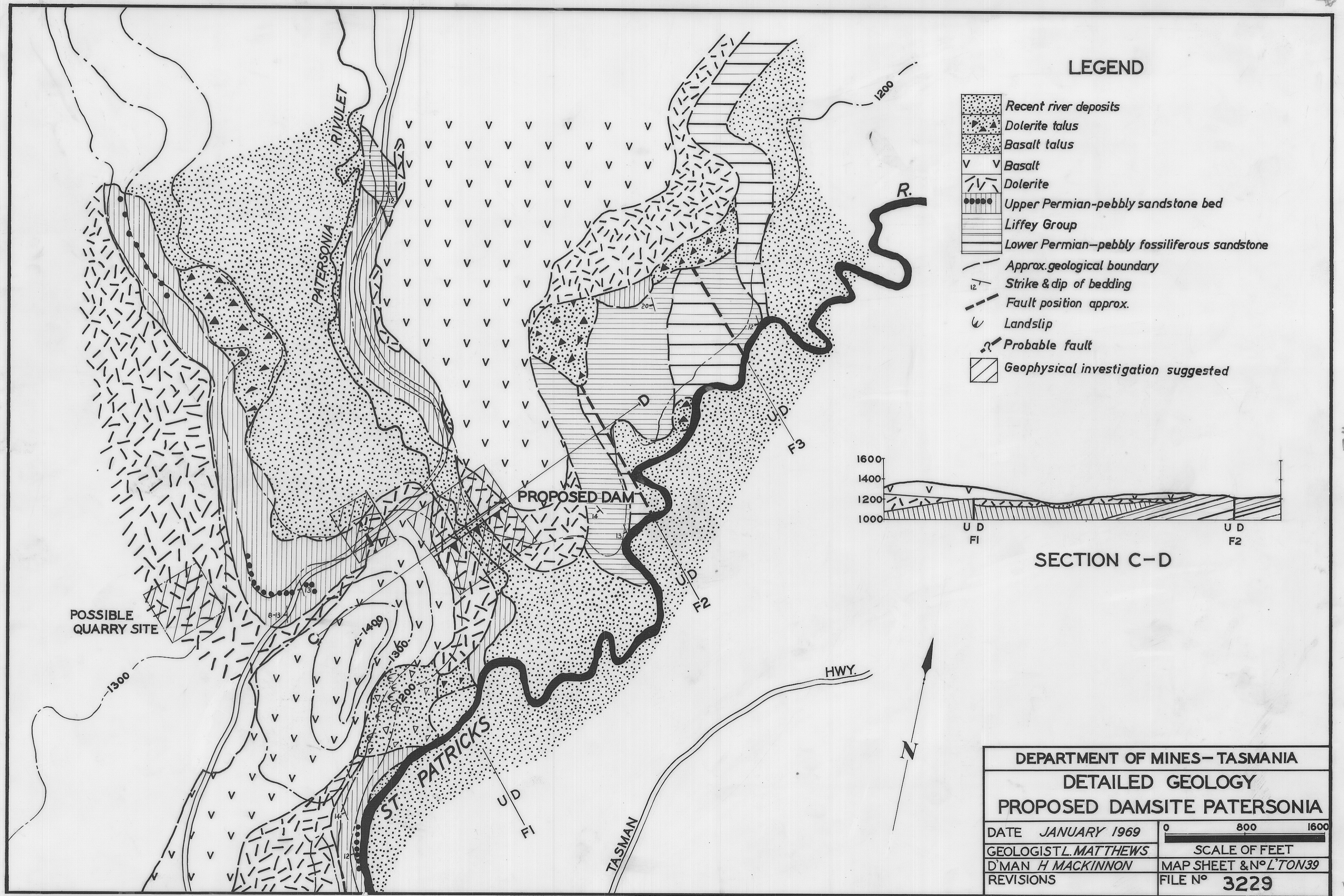
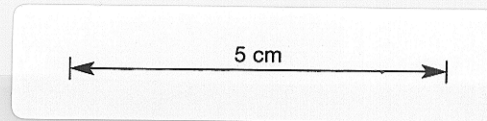
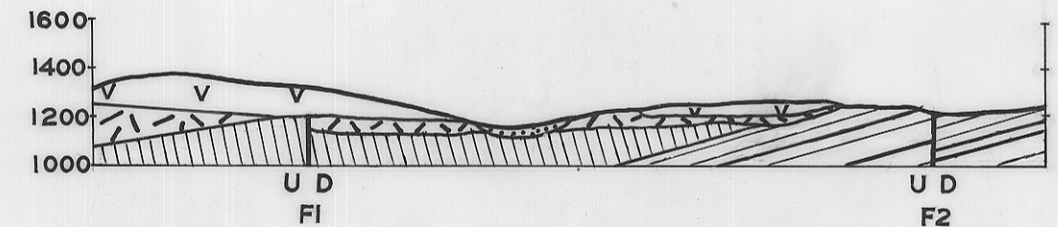


234



LEGEND

- Recent river deposits
- Dolerite talus
- Basalt talus
- Basalt
- Dolerite
- Upper Permian-pebbly sandstone bed
- Liffey Group
- Lower Permian-pebbly fossiliferous sandstone
- Approx. geological boundary
- Strike & dip of bedding
- Fault position approx.
- Landslip
- Probable fault
- Geophysical investigation suggested



SECTION C-D

DEPARTMENT OF MINES - TASMANIA	
DETAILED GEOLOGY	
PROPOSED DAMSITE PATERSONIA	
DATE JANUARY 1969	0 800 1600
GEOLOGIST L. MATTHEWS	SCALE OF FEET
D'MAN H. MACKINNON	MAP SHEET & N° L'TON 39
REVISIONS	FILE N° 3229

fig. 28