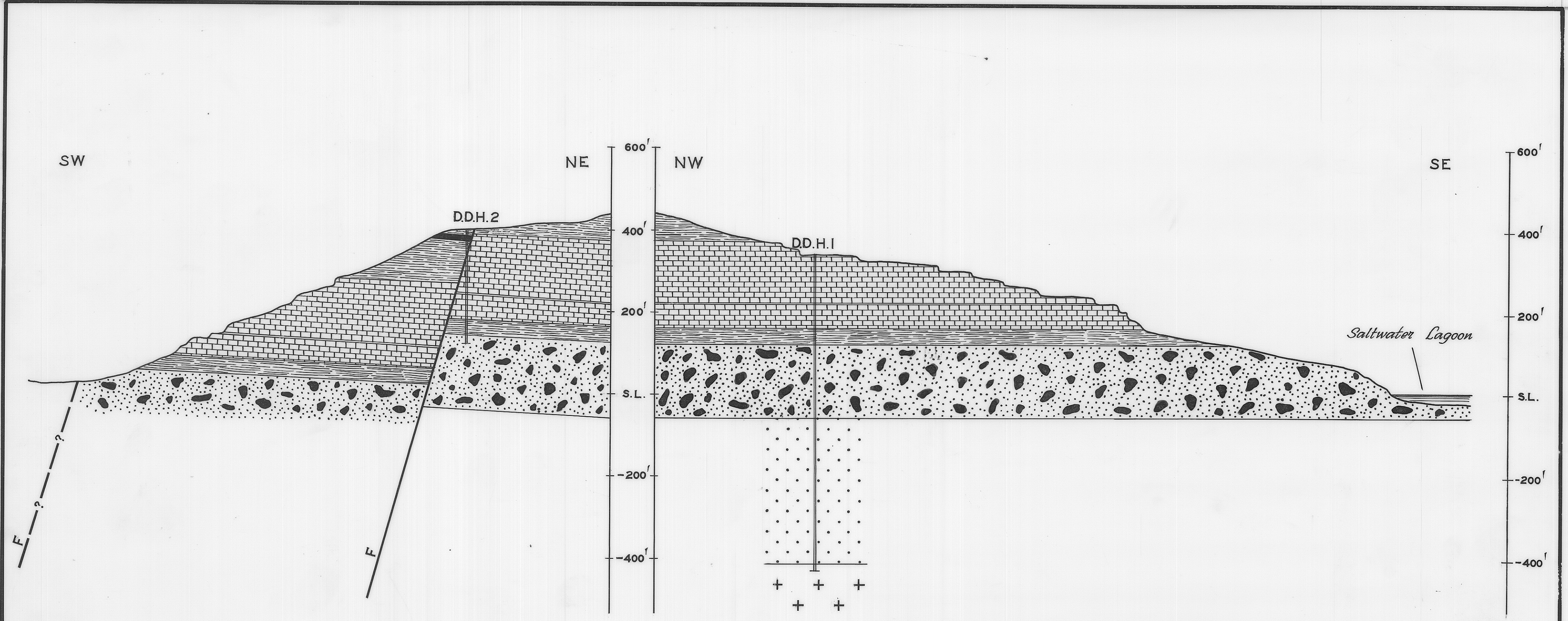
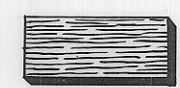
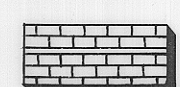



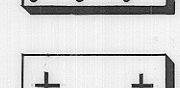


33



-  Siltstone
-  Limestone with siltstone bed
-  Glauconitic sandstone
-  Conglomerate
-  Pebbly Arkose
-  Granite

Note: Information from 2 boreholes and limited surface exposures.

DEPARTMENT OF MINES — TASMANIA	
STRUCTURE — FRIENDLY BEACHES LIMESTONE DEPOSIT	
Date:- January 1969	Vert. Exaggeration 5:4
Geologist:- D.J. Jennings	Map sheet & No. Swansea 63
Draughtsman:- P. Mankivell	File No 3231
Revisions:-	

Fig 3

Reduce to 4"