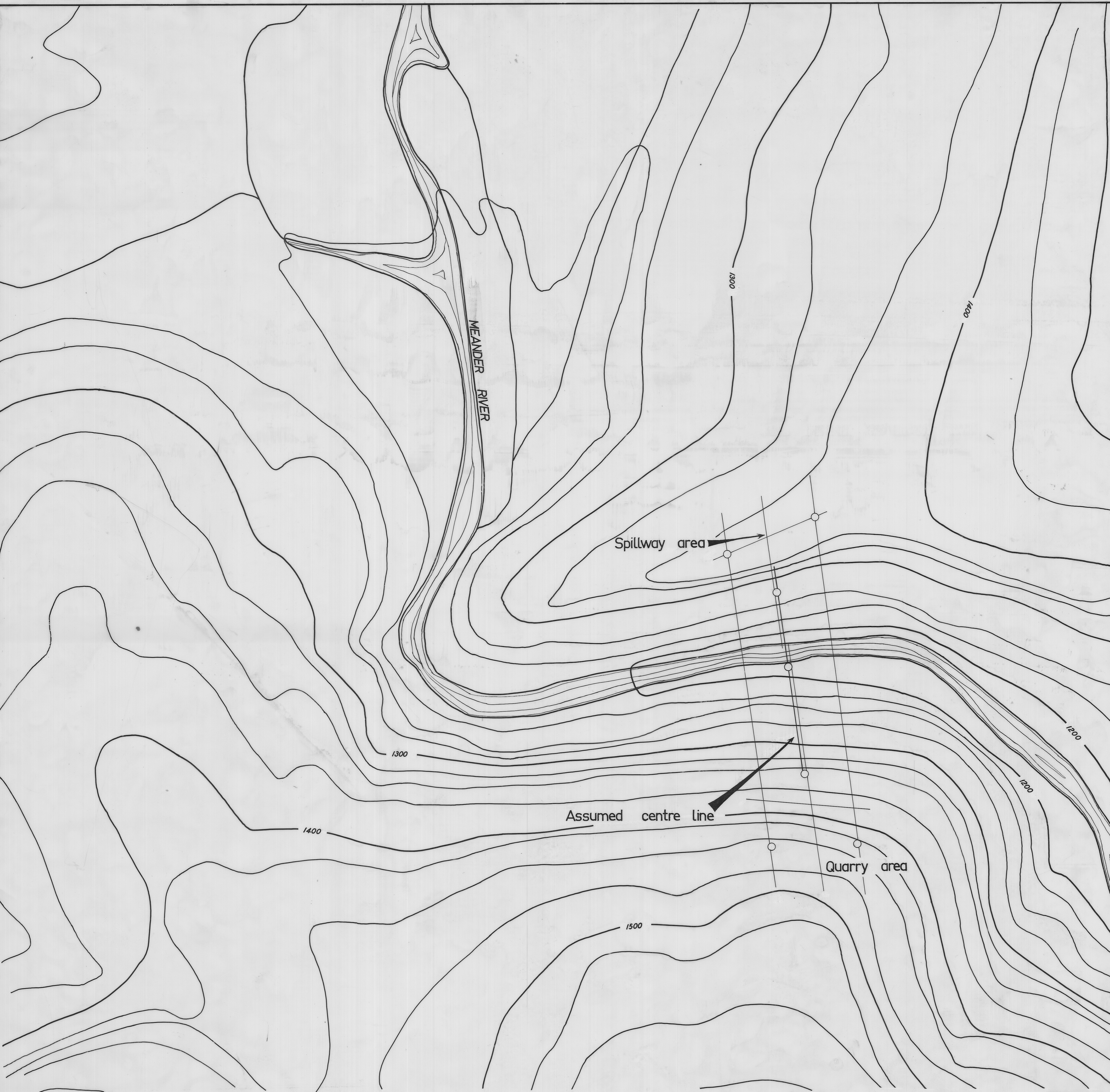
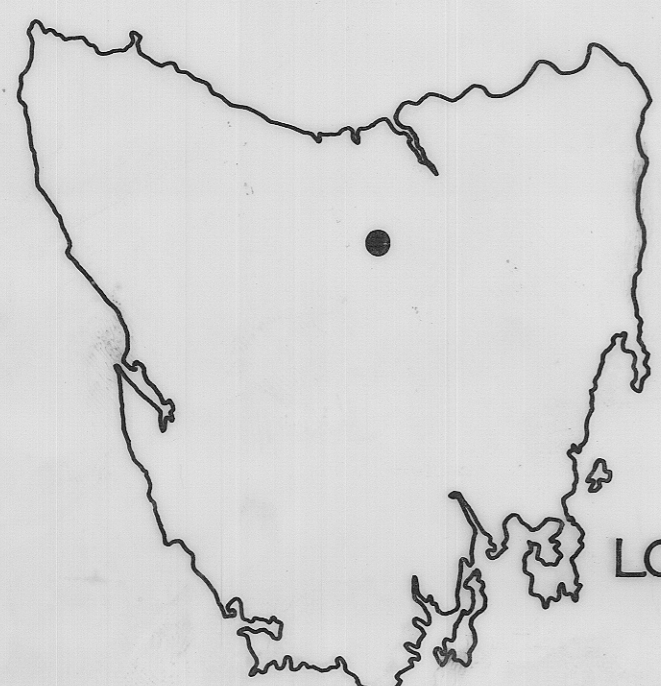


3266

78

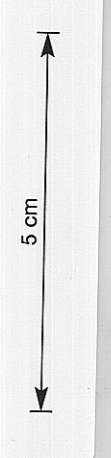
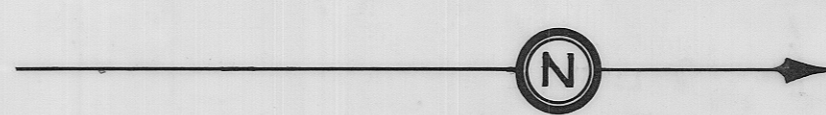


Reduce to 7 1/4"



LOCATION MAP

- Seismic spreads
- Diamond boreholes



DEPARTMENT OF MINES — TASMANIA	
PROPOSED INVESTIGATION PROGRAMME MEANDER RIVER NO 1 DAMSITE	
DATE AUGUST 1969	SCALE OF CHAINS 0 2 4 6
GEOLOGIST P. STEVENSON	MAPSHEET & NO QUAMBY 46
DRAUGHTSMAN T.R. BELLIS	FILE NO 3266
REVISIONS	