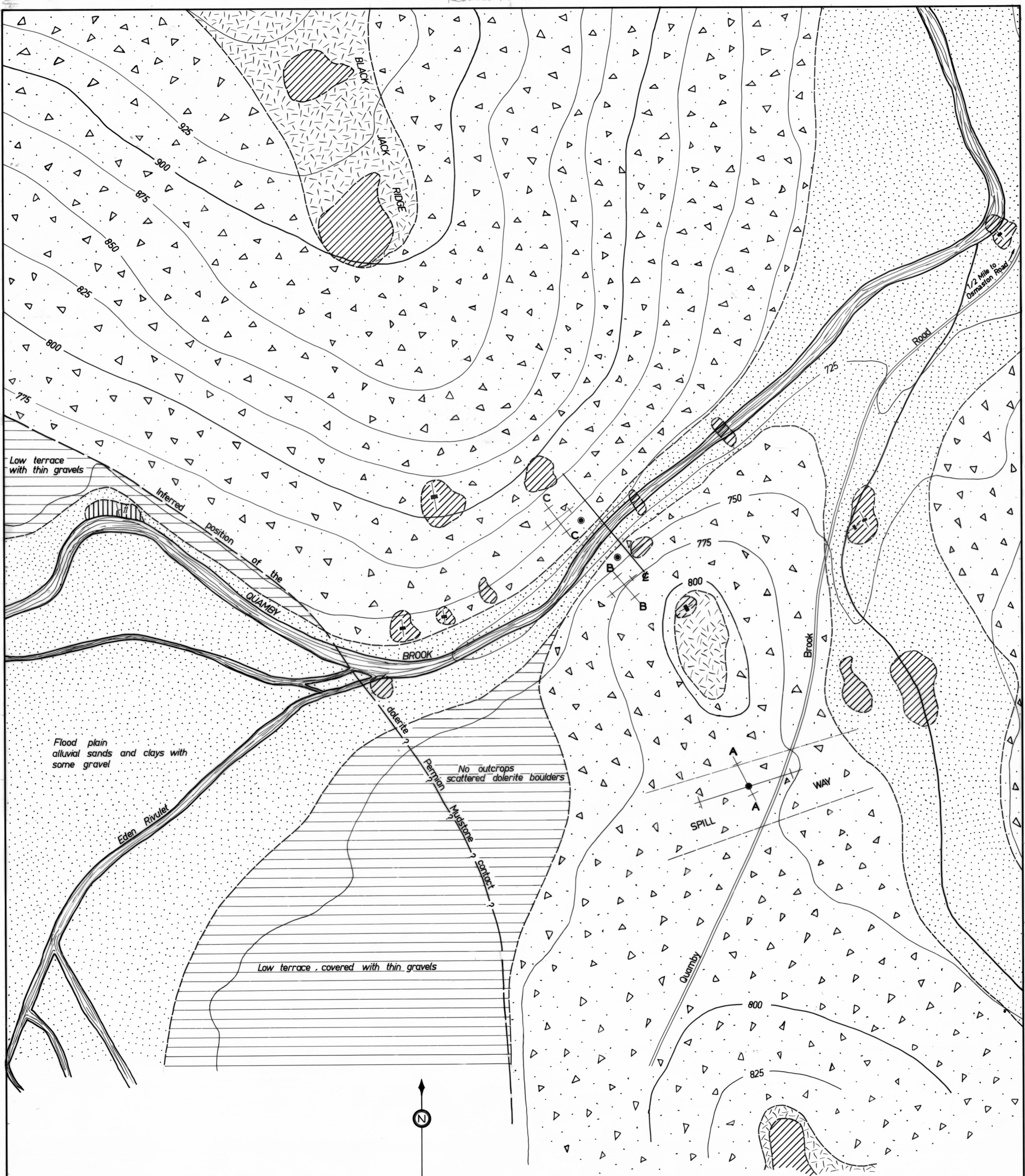


Reduce 1:5000



Low terrace with thin gravels

Flood plain alluvial sands and clays with some gravel

Low terrace, covered with thin gravels



- RECENT
 - Alluvial sands clays with some gravels
 - Terrace gravels
- JURASSIC
 - Dolerite
 - Dolerite outcrops
 - Dolerite talus
- PERMIAN
 - Meander Mudstone Formation
 - Bedded mudstone

- Geological boundary approximate
- Bedding
- Joints vertical
- Proposed seismic lines
- Proposed drill holes
- Proposed damsite centre line

DEPARTMENT OF MINES — TASMANIA	
QUAMBY BROOK DAMSITE N° 11	
DATE AUGUST 1969	SCALE OF CHAINS 0 2 4 6
GEOLOGIST W. R. MOORE	MAPSHEET & N° QUAMBY 46
DRAUGHTSMAN T. R. BELLIS	FILE N° 3271
REVISIONS	

3271

261

5 cm

fig 21