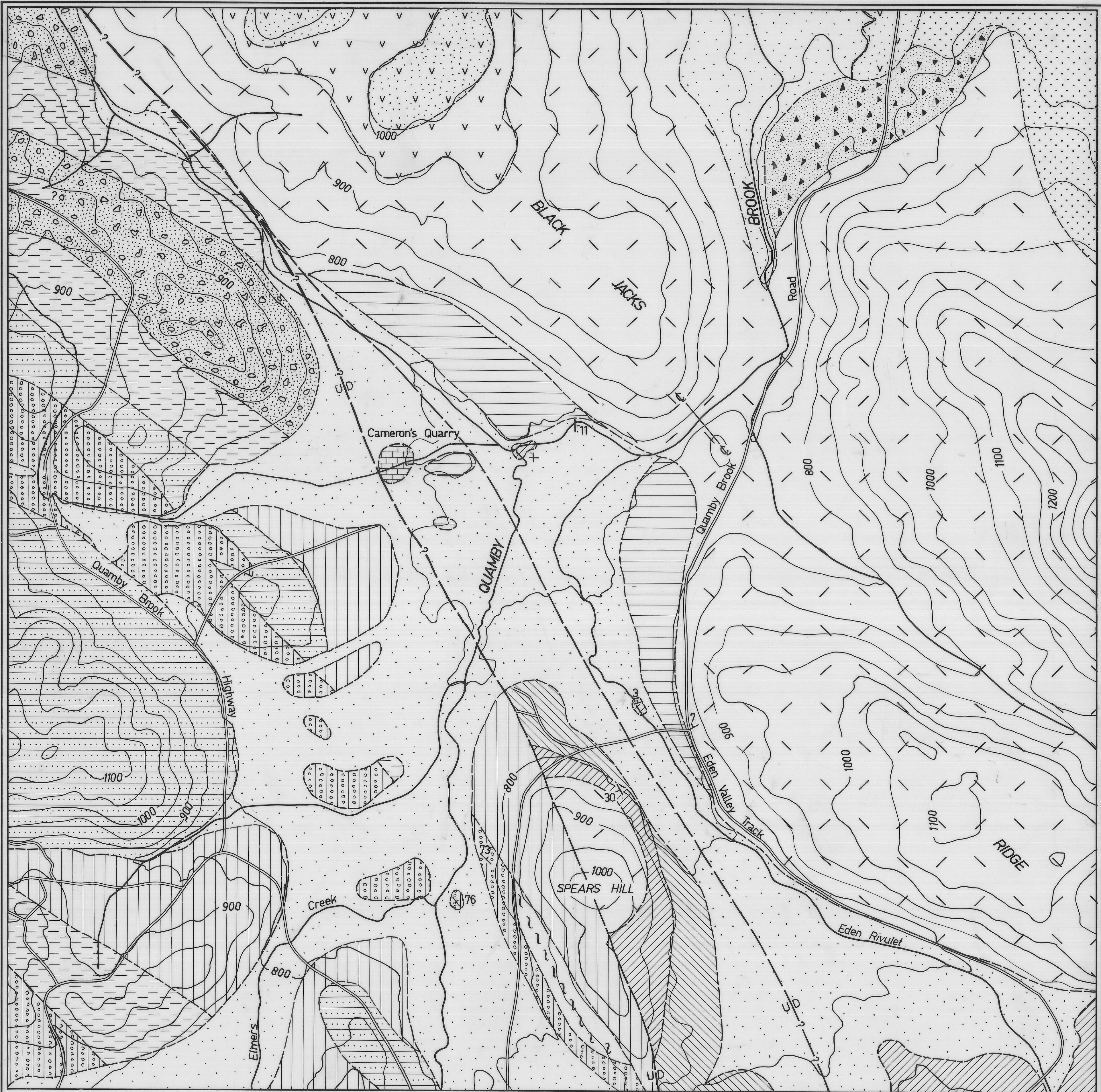


Reduce to 50

5 cm

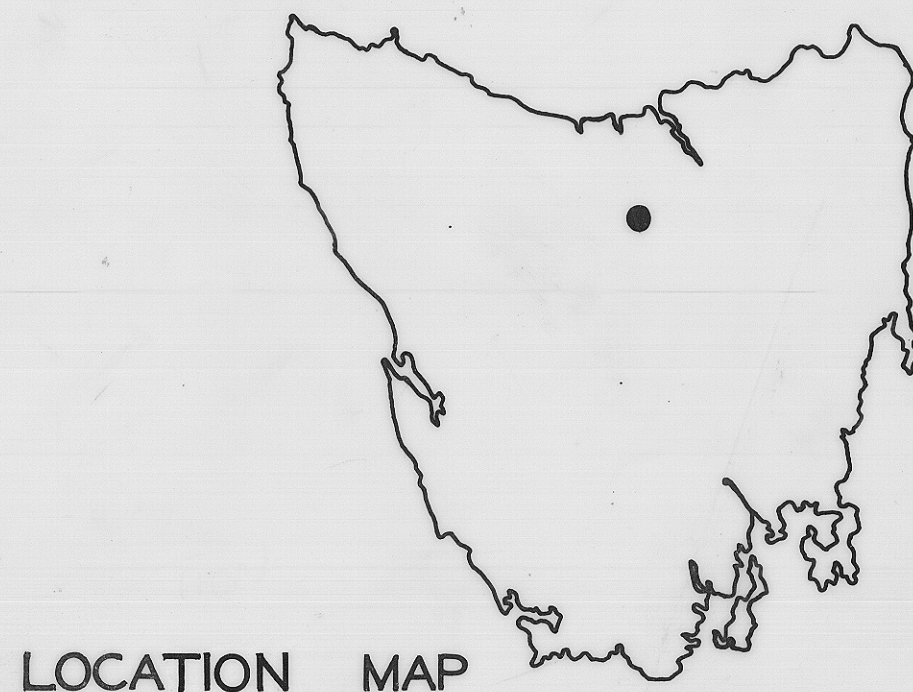
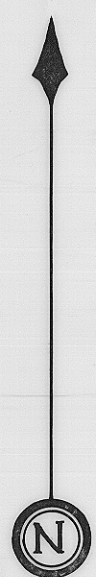


- QUATERNARY
 - Alluvium
 - Dolerite talus
- TERTIARY
 - Sandstone
- PERMIAN
 - Poatina Group
 - Liffey Group
 - Golden Valley Group
- ORDOVICIAN
 - Gordon Limestone
- CAMBRIAN
 - Undifferentiated
 - Pebble and cobble conglomerate
 - Quartz feldspar porphyry
 - Phyllite and slate with some sandstone
 - Grey-green greywacke siltstone sequences with conglomerate
 - Greywacke, conglomerate, phyllite and slate

IGNEOUS ROCKS

- TERTIARY
 - Basalt
 - Lateritised basalt
- JURASSIC
 - Dolerite

- Geological boundary
- Fault
- Contour
- Roads
- Proposed damsite centre line



LOCATION MAP

DEPARTMENT OF MINES — TASMANIA	
REGIONAL GEOLOGY	
QUAMBY BROOK DAMSITE N° 11	
DATE AUGUST 1969	SCALE OF CHAINS 0 10 20 30
GEOLOGIST COMPILATION	MAPSHEET & N° QUAMBY 46
DRAUGHTSMAN T.R. BELLIS	
REVISIONS	FILE N° 3272